

Plug & Play WiFi IP Kit

IP cameras and NVR WiFi



Installation manual

How to install the system

How networking



Contents of this handbook

The WiFi kit RMK series are designed to create small wireless video surveillance systems are ready to operate in minutes and can be installed without any specific knowledge. This manual explains how to install cameras and video recorder, how to make the basic adjustments and how to connect remotely.

Package Contents

The kit you have purchased is a complete wireless video surveillance system. The package includes:

1 - VCR WI-FI (NVR)



2 - 1,2,3,4 CAMERA WI-FI FOR INDOOR / OUTDOOR



3 - 12V POWER SUPPLY FOR EACH CAMERA



4 - AN EXTENSION CORD 18 M POWER FOR EACH CAMERA



Connect the cameras

The cameras of this system are designed to not require any configuration. You just plug the adapter into the outlet. At first you'd better feed the cameras near the NVR, before installing them in their position, in order to easily configure the system.

1 - SCREW ANTENNAE

Screw the two antennas on the rear of the camera



2 - CONNECT THE POWER SUPPLY

The camera power supply, supplied with the cameras, must be connected to the socket DC12V (center in the photo). The connector for the wired network and the reset button does not need you to normal operation.

CAUTION: Do not confuse the NVR feeder (2A) with the smaller one for the cameras (1A).

If you do not have an electrical outlet near the camera can use the extension to 18 m. provided.



Install the Hard Disk

If you want your system to record, you must install a hard drive inside the VCR. Any of the SATA hard drives for computers 3.5 ", but for a longer life would agree to purchase an appropriate model for video recording. The maximum HDD capacity, which is mounted is 4 TB.

In choosing the Hard Disk keep in mind that one hour of a camera recording takes up about 1 GB so on a Hard Disk 1TB you can record one camera for about 1000 hours.



Remove the cover by unscrewing the 5 screws:
2 on each side and a rear



Connect the hard drive with two power and data cables
that are inside



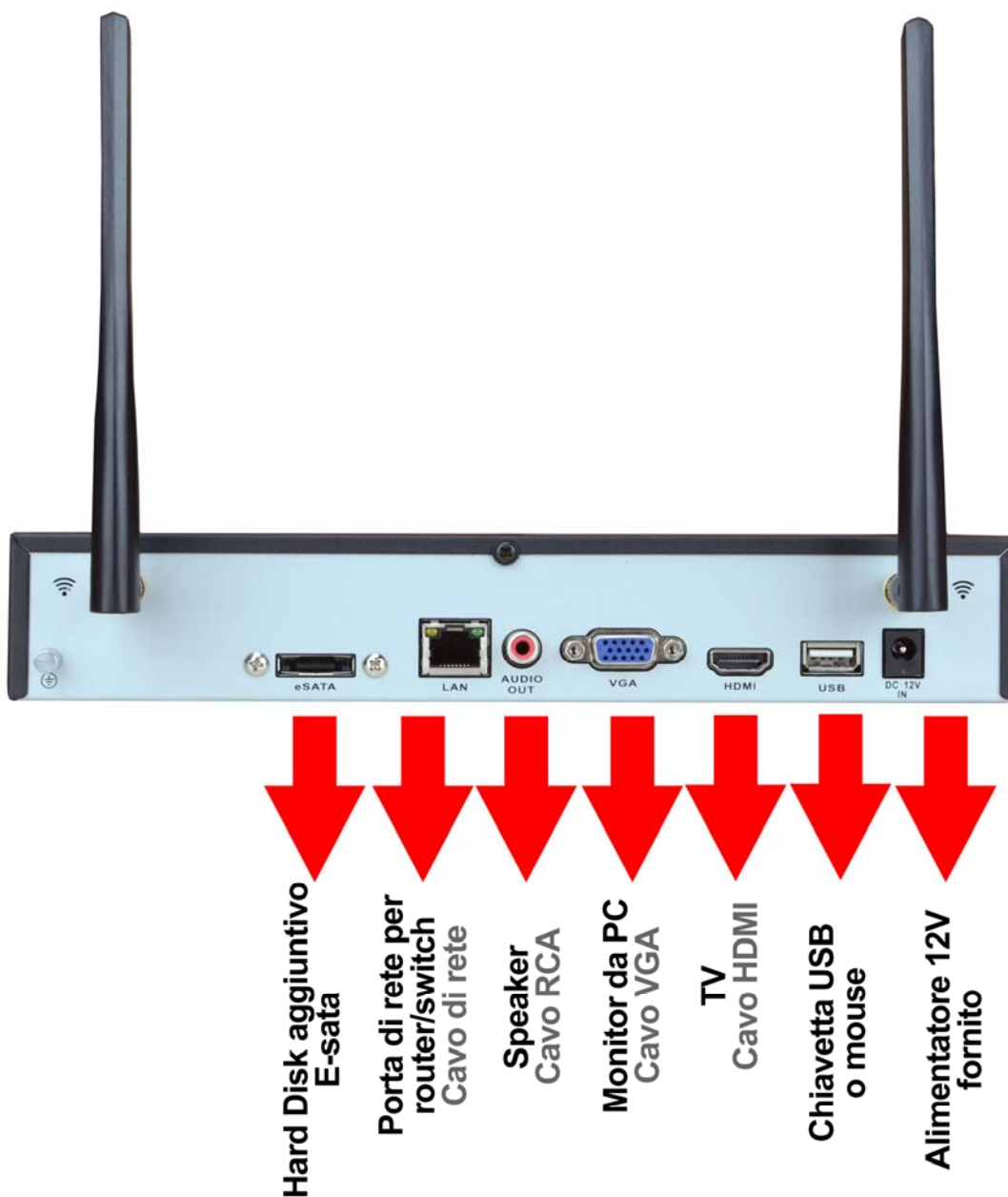
Fix the hard disk with 4 screws which are screwed are screwed
from underneath the VCR



Close again the lid and tighten the two antennas on
back of

Connect the NVR

The central unit of your system is a WiFi network video recorder, an apparatus that is also called NVR. To use it you have to make some connections on the back.





Follow these steps to connect your NVR

1 - SCREW ANTENNAE

Screw the two antennas on the back of the NVR. Eastern straight as shown.

2 - A COLLEAGUE FROM COMPUTER MONITOR

To use your NVR you need a monitor to see where the cameras and configure the options. If you use a computer monitor with a VGA port, you must connect the cable to the blue port of the NVR, called VGA.

3 - CONNECT ONE TV

Even the TV can be a great monitor for your NVR. To connect, you need an HDMI cable that plugs into the HDMI port of the NVR. To view images on TV you must remember to select in your TV's HDMI external input you used to the NVR. Typically this is done by pressing the SOURCE button on the remote. The HDMI cable, in addition to video, also carries the audio signal of where your cameras are equipped.

4 - CONNECT THE MOUSE

The NVR is controlled with the mouse as a computer. Plug the mouse that came with your product to one of the two USB ports that is provided with your NVR (front and rear)

5 - CONNECT THE POWER SUPPLY

The camera power supply, supplied with the DVR, is connected to the DC12V connector on the back of the NVR. Just plugged the plug the NVR will turn on and you will see an image appear on the monitor. If you do not see anything sympathize checks the connection to the monitor. CAUTION: Do not confuse the NVR feeder (2A) with the smaller one for the cameras (1A).

6 - CONNECT THE ROUTER

In order to view your cameras over the Internet, you must connect the NVR to your network. You must use a standard network cable straight type and insert one hand into the LAN port of NVR and the other to an available port on your router or switch. The moment you connect the cable, the yellow and green LED located above the LAN port of NVR should go on. If you do not light controls the cable you are using. The NVR is factory set to automatically configure themselves

Network

automatically (DHCP).

Make first power

Just connect the adapter plug, the NVR starts up and displays an image on the screen. If you do not see the picture you have to check the cable and the monitor settings. If you have connected the cameras to an outlet you'll see, already on the screen, no need to do anything.

When you first turn starts a wizard that helps you set up your system in minutes.

1 - MAKE YOUR PASSWORD

At least 6 characters. Do not forget it.



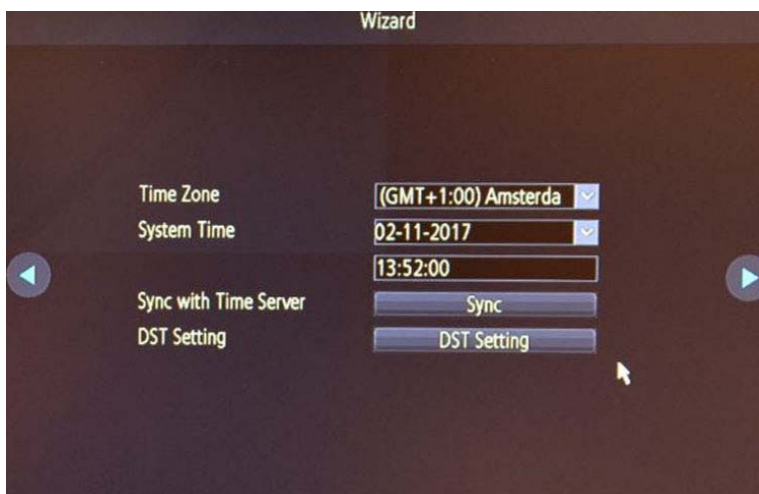
2 - MAKE THE RESOLUTION OF THE MONITOR

To be able to work with all monitors, the video output of NVR is factory set to a low value. If you have a monitor more than 19", recently built, sets the maximum 1920x1080 resolution. If your monitor does not support the new resolution, you will not see anything for a few seconds, then the image will reappear and you can try a lower resolution of the many available.



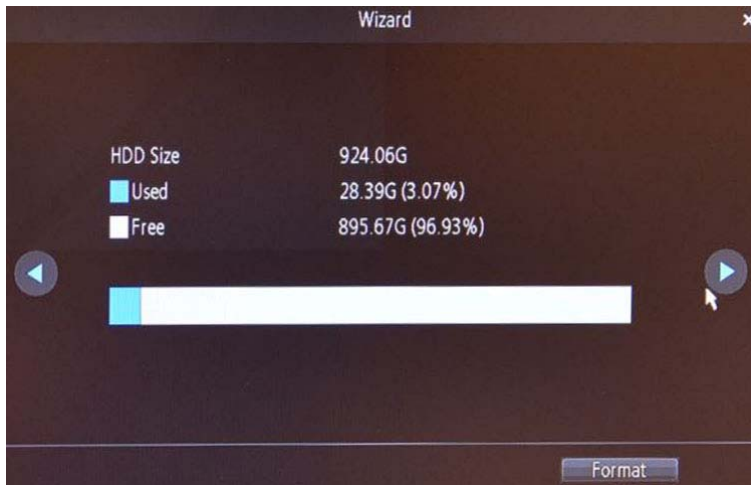
3 - SETTING THE DATE AND TIME

Set the time zone UTC + 1, the correct date and time. If you want you can also set the daylight saving time (DST) or automatic synchronization via internet (SYNC)



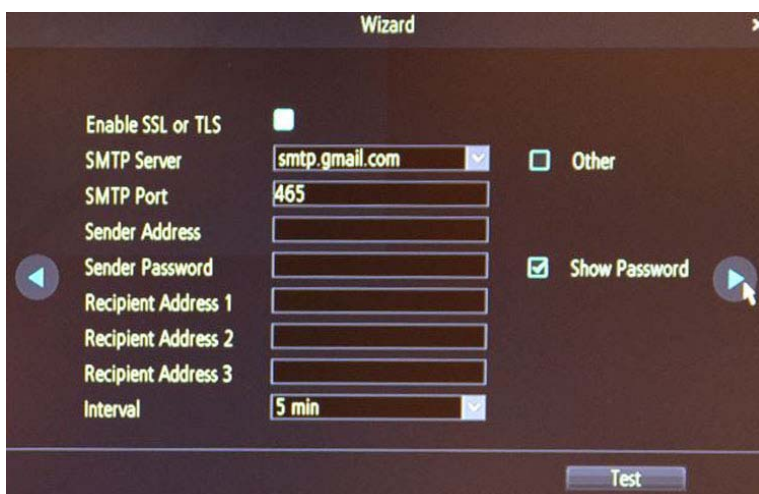
4 - FORMAT HARD DISK DRIVE

Press the FORMAT button and wait while you complete the formatting that allows the NVR to record on disk



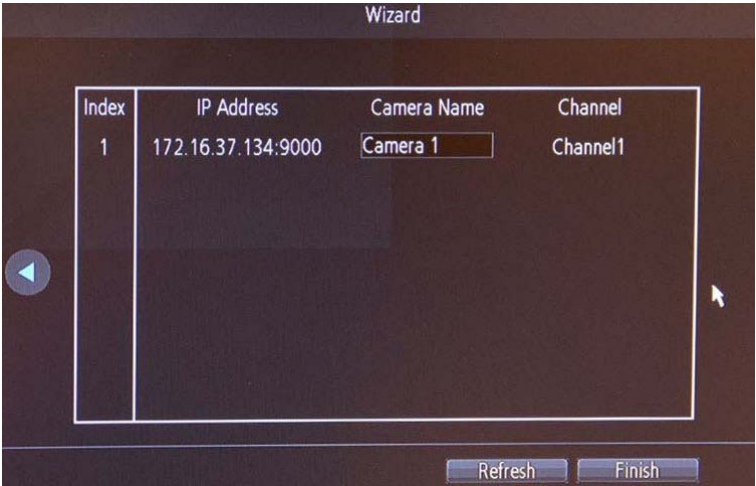
5 - INSERT THE DATA TO SEND THE EMAIL

If you want the system to send e-mails you have to enter the data of your SMTP mail server. You can ask your Internet provider to enter data, or use a free online service. If you do not know what to put moves on, you will complete later.



6 - INSERT THE NAME OF THE CAMERAS

Enter a name that distinguishes your cameras you see already-screen



FINISHED!

At the end of the wizard, your wireless CCTV system is already functioning and records continuously.

Review the records

To review the records kept by your NVR do the following.

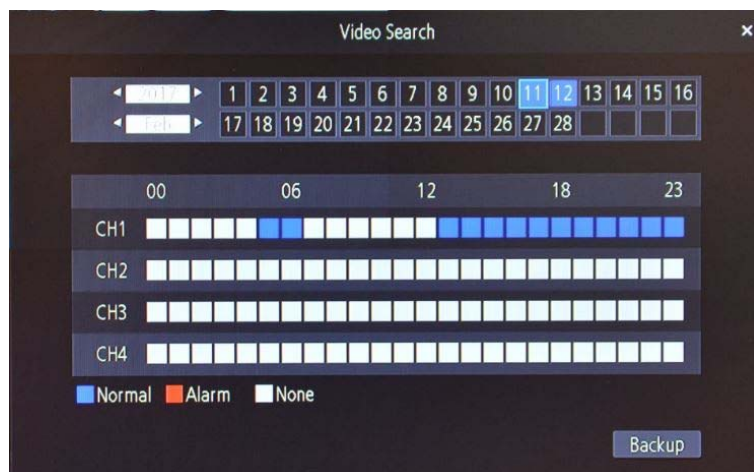
1 - OPEN WINDOW PLAYBACK

PLAYBACK Click the icon in the bottom of the screen control panel



2 - CHOOSE DAY AND TIME YOU WANT TO REVISE

Select the top left on the day you're interested in. The hours that contain recordings are marked by colored box. Click on one of these.



3 - PLAY THE INSTANT YOU WANT TO REVISE

In the bottom timeline are in blue and red recording the times when there has been an intrusion. This is the Motion Detection function, which is very convenient to quickly find what interests you. Click where you want the timeline to play back at that exact moment.

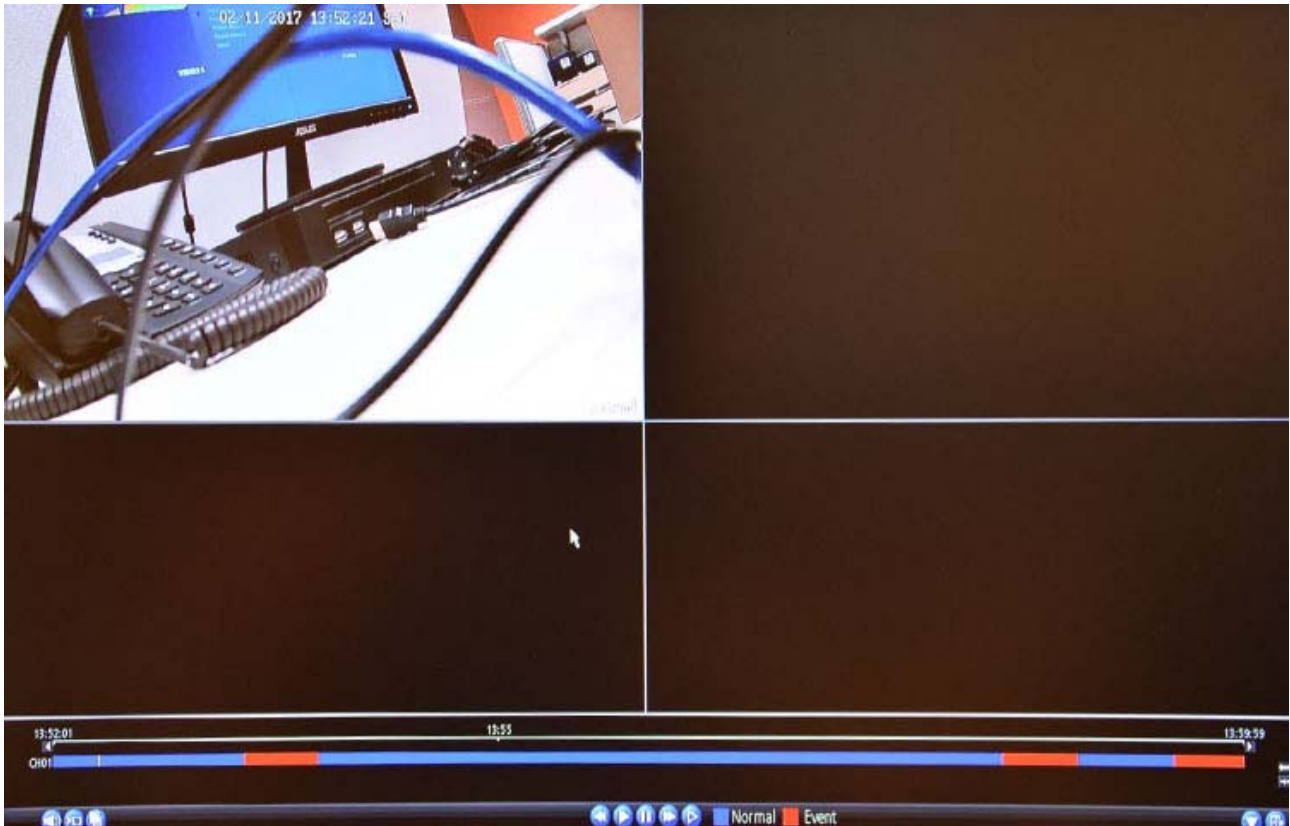
With the control buttons at the bottom you can also play so accelerated, slowed or advance frame by frame.

INSTALLATION MANUAL

RMK SERIES - KIT CAMERA / NVR WIFI



Page: 13



Export movies

You can save the movies recorded on the most relevant to a USB stick. Make this way

1 - INSERT THE USB KEY

Insert a USB stick into the USB port on the front of the NVR



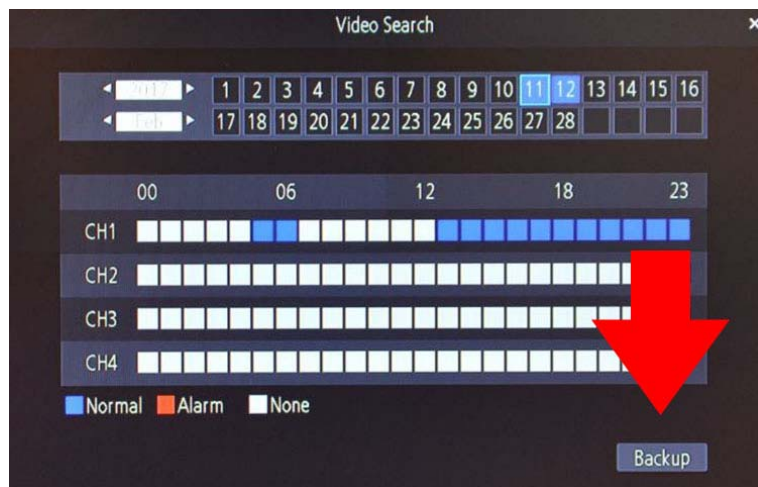
2 - OPEN WINDOW PLAYBACK

PLAYBACK Click the icon in the bottom of the screen control panel



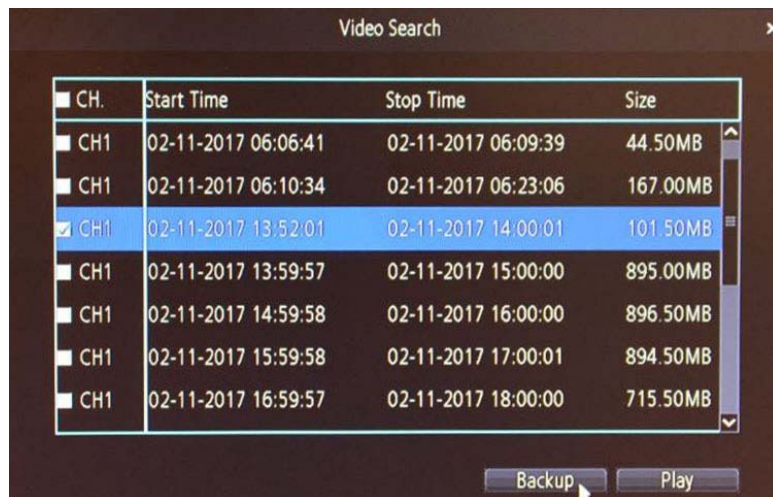
3 - CHOOSE THE DAY YOU WANT TO EXPORT

Select the top left on the day you're interested in. Click the button BACKUP



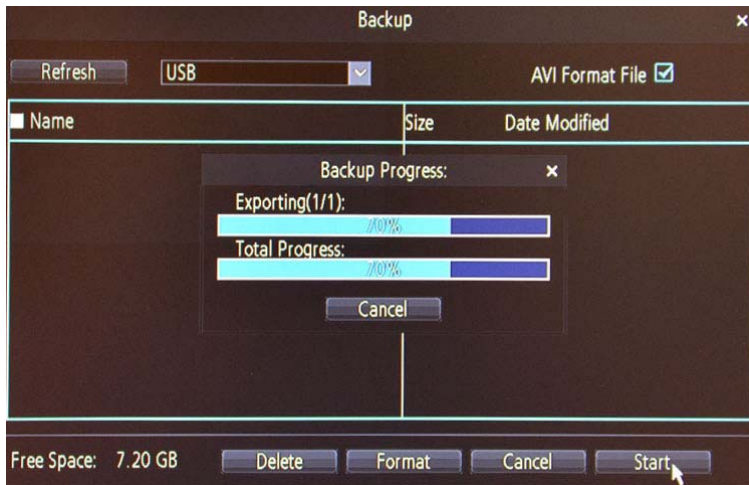
4 - CHOOSE FILE VIDEO

Put check on files that you want to save on your stick. Find a file for each hour of recording for each channel. Limits the number of files in a few well-chosen files, not having to wait too much elaboration. If you want to see what is in the file before you save it, you can use the PLAY button



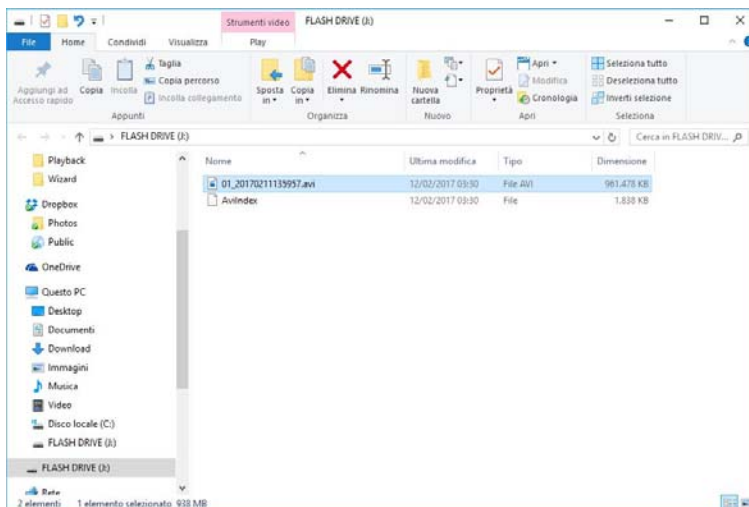
5 - SAVE FILES ON KEY

Click BACKUP to copy the videos you have selected the backup USB stick. The export process can take several minutes depending on the size of the files you selected. Wait until the process is complete otherwise the files will be unreadable.



6 - PLAY VIDEO FILES WITH THE PC

Enter now the key on a computer and explore the contents with Windows Explorer. You'll find videos files to AVI format. To play them using a video player such as Windows Media Player or VLC.



Rearrange cameras

You can change the arrangement of cameras in the 4 squares at your leisure

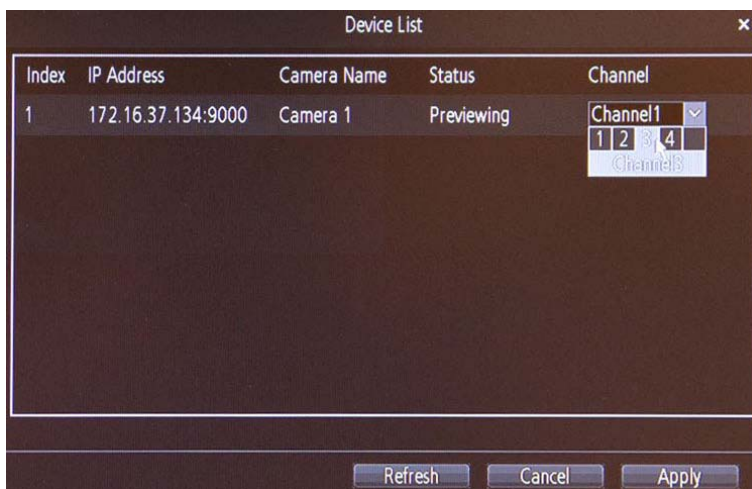
1 - OPEN WINDOW CHANNEL

CHANNEL Click the icon in the bottom of the screen control panel



2 - SELECT THE BOX

Choose what channel (box) to display all cameras



Connect the NVR to your network

For you can connect to your surveillance system via PC or mobile you must connect the NVR to your network. To do this using a network cable and connect the LAN port of the NVR to a free port on your router or switch. Check the LAN port LEDs light up, this means that the connection is correct.



Your NVR is configured on the network automatically (DHCP). You need not worry to enter any parameters.

CAUTION. Do you have to connect to your network if you want to make connections remotely illustrated in the following chapters.

Connect with your mobile phone

If you have connected the 'NVR to your network, and that have Internet access, you can connect immediately with your smartphone both Android and iOS (iPhone, iPad). Follow these instructions

1 - DOWNLOAD APP Streamview

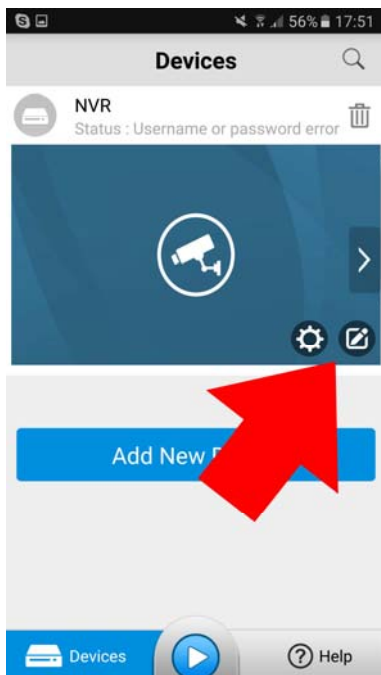
The APP to use for your system is called **Streamview** and it is free to download from Google Play or Apple Store. Download it and open it on your mobile device.



2 - CONNECTED TO YOUR WIFI NETWORK AND OPEN STRAMVIEW

Check that your phone is connected to your WiFi network at home. It 'important because in this way the APP will be able to detect alone your new NVR network.

Launch the application Streamview. The application automatically detects your NVR, but can not access it because you do not know your password. To change the password tap the edit icon.



3 - ENTER YOUR PASSWORD

Enters the access password you've set in your NVR. On this page you may also

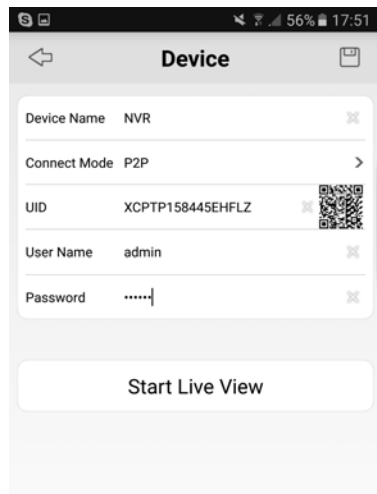
INSTALLATION MANUAL

RMK SERIES - KIT CAMERA / NVR WIFI



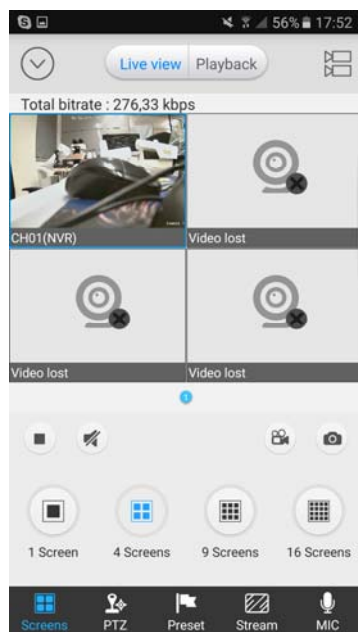
Page: 20

enter the data manually, but you do not need to do this if you're setting up the app in your network, which is connected to the NVR. You just have to change the password, then tap START LIVE VIEW to connect.



4 - FINISHED

Well now you've connected. You can focus on a single camera with a double twist and rotate your phone to view in full screen. You can hear the sound from the speaker icon.



5 - YOU CAN ALSO REVISE THE RECORDINGS

With the phone you can also review the data stored in the NVR. Tap the PLAYBACK button at the top and choose the time on the time bar.



6 - ALSO WORKS VIA INTERNET

Thanks to the P2P function you can connect to your system via the Internet without having to do anything. Try to disconnect from your WiFi network and restart Streamview.

Make sure you have active data services in your mobile and that the area in which you find yourself is covered. You'll see that everything will work as your internal network.

Now you can travel the world, always with your cameras under control.



Connect with your computer

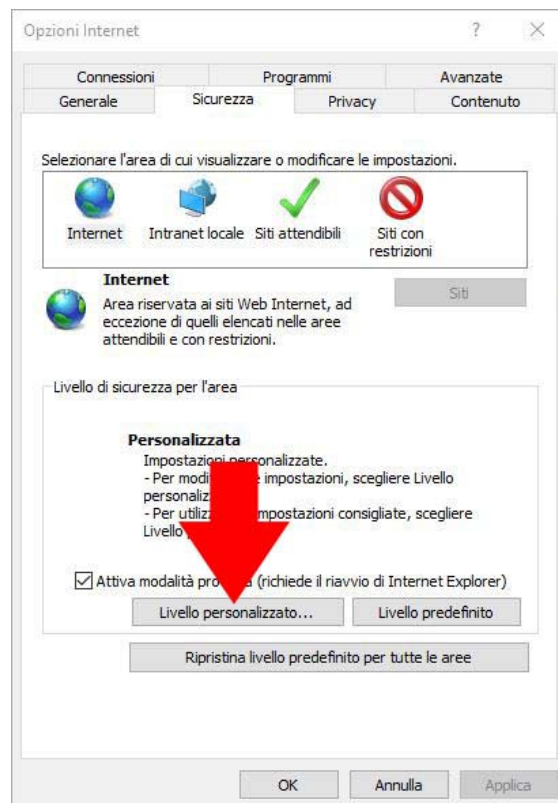
On the CD you received along with your kit are the SmartClient program that can be useful if you want to connect to computers. If you are interested in using this software you can find the specific manual on the CD.

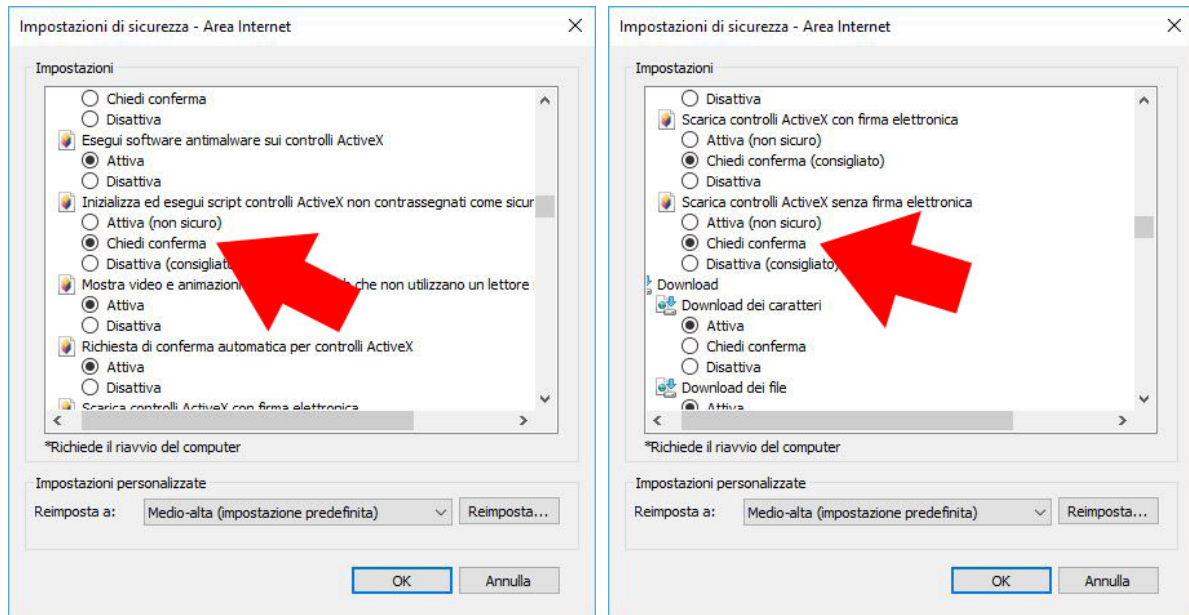
Connect with your browser

If you have a computer connected to the same WiFi network your kit, you can view your cameras without installing the SmartClient software, but simply with Internet browser **Internet Explorer and Firefox** . On first access you will be prompted to download and install the plug-in needed for connection. Follow these instructions.

1 - ENABLE PERFORMANCE OF ACTIVEX

Internet Explorer has security settings that may prevent the installation of the ActiveX component. Before connect you need to enable the execution of ActiveX not marked as safe. Open Internet Explorer and choose TOOLS / INTERNET OPTIONS

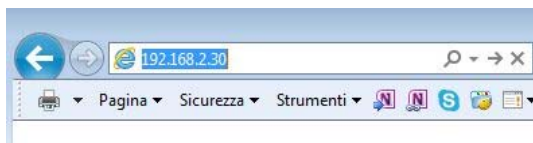




2 - ENTER THE ADDRESS OF YOUR NETWORK NVR

You may know the IP address that your NVR is using the local network by opening the Settings menu in the NETWORK section.

We'll explain well in the advanced configuration instruction which you'll find below. Type the IP address of the DVR in the Internet Explorer toolbar



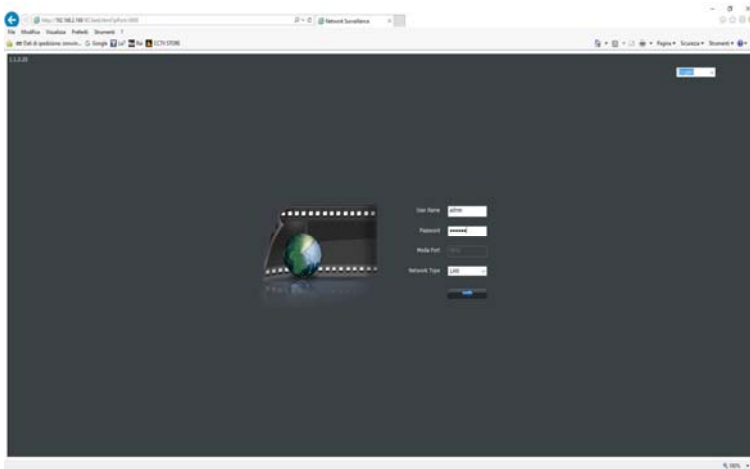
3 - AUTHORIZE THE INSTALLATION OF COMPONENTS

When you first make that you have to authorize the installation of the necessary components



4 - ENTER YOUR PASSWORD

Enter the password for access to your NVR



5 - FINISHED

Now you logged in and you can see images of the live cameras by double clicking the icon. You can also review the records clicking PLAYBACK and change the configuration of the system that we will see in the advanced settings.

