

## Video recorders DX Series

AHD DVR cameras, analog, IP



## CMS Program Manual

How to install and use the client program to the DVR



## Contents of this handbook

This manual describes how to install and use the CMS program that allows centralized management of multiple DVRs RX Series from a single computer. The Windows program is included on the CD supplied with the DVR. Note that for remote access to a single DVR is not necessary to use Viewclient, but you can also simply use Internet Explorer, as described in the installation manual.

## Installing the program

The viewclient program is on the CD supplied with the DVR. To install it you must double-click on the icon and follow the installation steps.



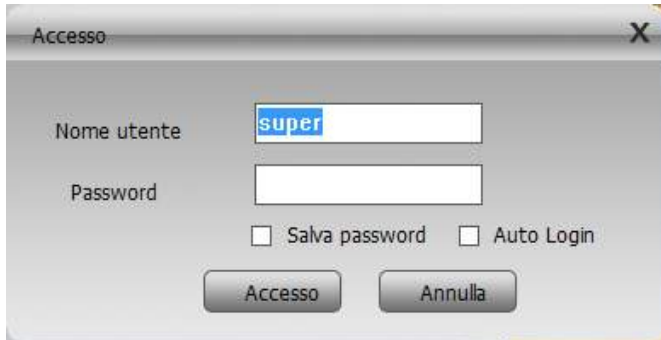
The program is not protected by security codes or keys. You can install it freely on as many computers as you want.

After installation, you can launch the program by double-clicking the program icon



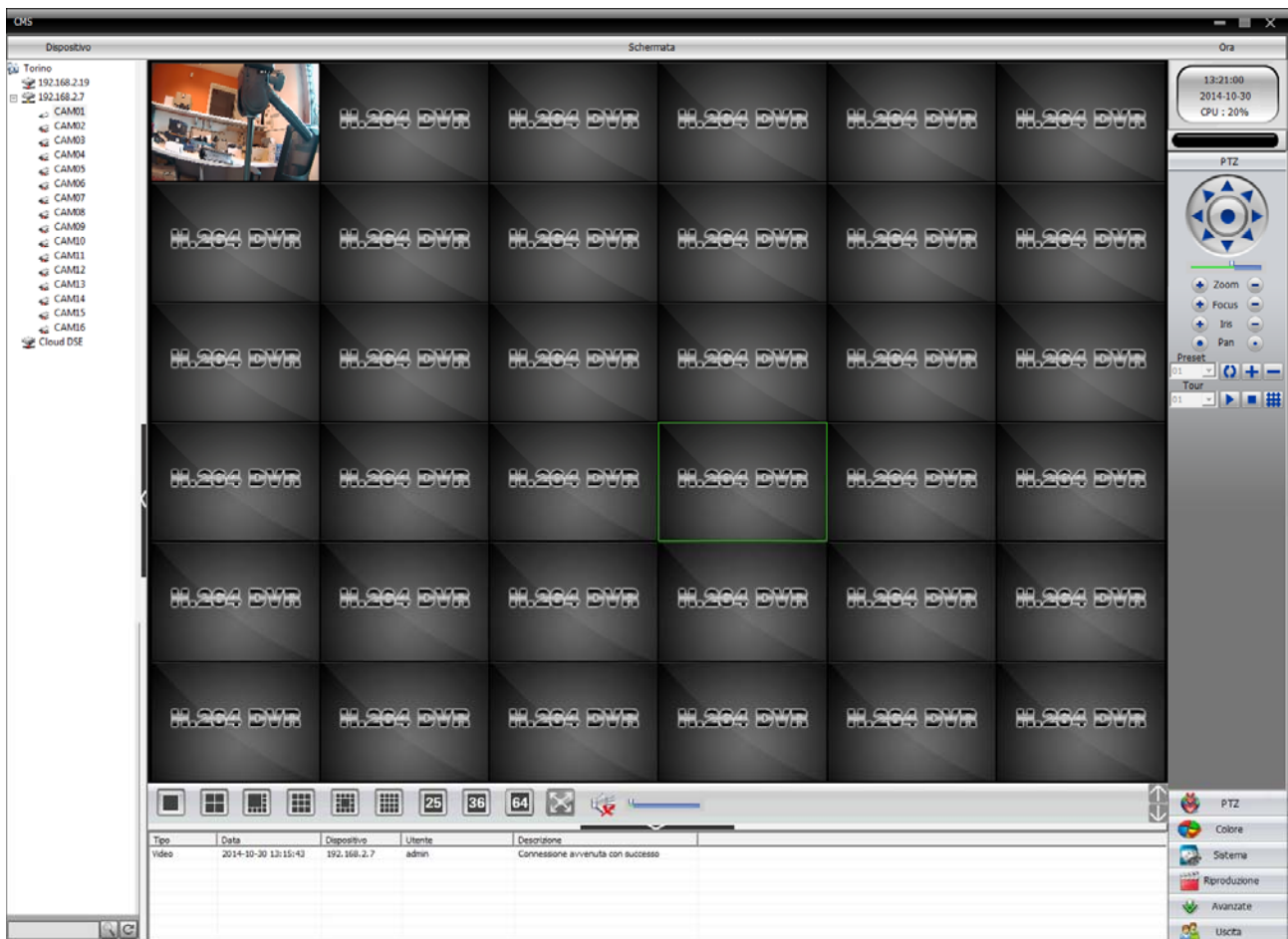
### LOG-IN

The program is password protected.



The default password is:

**USERNAME: PASSWORD super: (leave blank)**



The main program window is divided into different areas of operation



To maximize the viewing area is able to hide some sections clicking on the appropriate tabs.

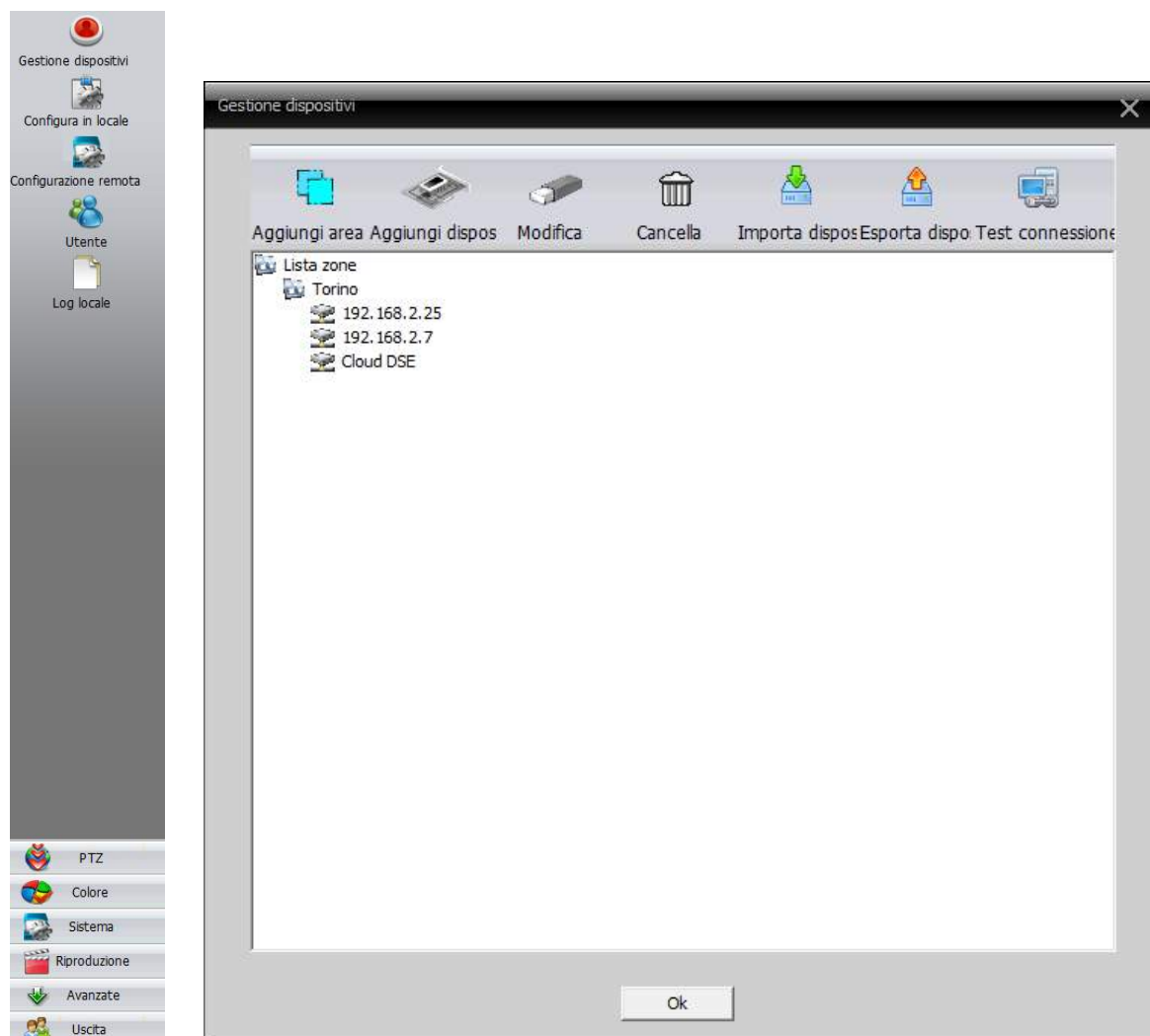


## Links to DVR

To use the program you must first provide the data for or to remote DVR you intend to manage.

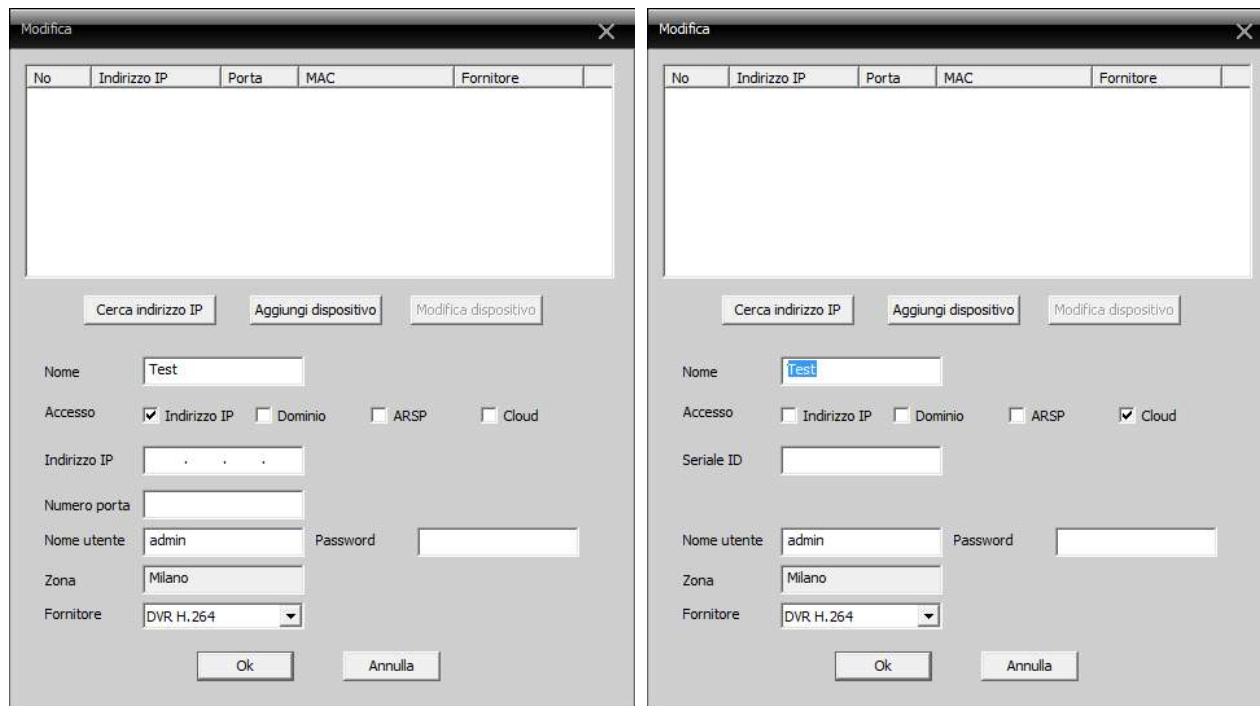
### ADD A NEW DVR

And 'possible to add a DVR in the first DEVICE MANAGEMENT section. Click DEVICE MANAGEMENT SYSTEM and the pushbutton right of the screen.



The program is also designed to handle a large number of DVR. To be able to group together in a logical way it is possible to insert AREAS, which could be geographical areas or any other logical reference. First click ADD AREA and enter the name of an area

to taste. It will appear in the list. Select the area created and press ADD DEVICE



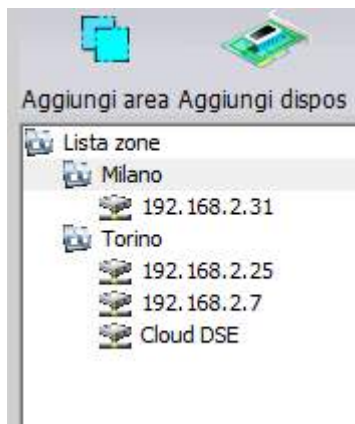
The image shows two side-by-side screenshots of the 'Modifica' (Modify) window in the ViewClient software. Both windows have a table with columns: No, Indirizzo IP, Porta, MAC, Fornitore. Below the table are buttons: 'Cerca indirizzo IP', 'Aggiungi dispositivo', and 'Modifica dispositivo'. The left window shows the 'Accesso' (Access) section with 'Indirizzo IP' selected. The right window shows the 'Accesso' section with 'Cloud' selected. Both windows also show fields for 'Nome' (Name), 'Indirizzo IP', 'Numero porta' (Port number), 'Nome utente' (Username), 'Password', 'Zona' (Zone), and 'Fornitore' (Provider). The right window also has a 'Seriale ID' (Serial ID) field.

In this mask fit the data needed to make the connection to the DVR.

- **SEARCH IP ADDRESS - DVR** If you want to insert resides in the local network of the CMS PC can use this button to search for all DX Series DVRs on the network. Then press the ADD DEVICE button to automatically load the DVR details below
- **NAME** - Identification name of the DVR to be freely assigned
- **ACCESS** - E 'can put a DVR in 4 different ways. By entering its IP ADDRESS (if operated over a local network or via the web with a static IP and port mapping), by entering the name of a domain (if operated via web with DDNS and port mapping), inputting the serial ID of the DVR (if made web without static IP and without port mapping, using cloud servers). The fourth ARSP mode is no longer used.
- **IP ADDRESS / DOMAIN / SERIAL** - Please select your DVR, depending on the type of access you have chosen.
- **PORT NUMBER** - Enter the connection port (default 34567). The figure is not required when connecting via the cloud
- **USERNAME** - The username to access the DVR, factory setting: admin
- **PASSWORD** - Password for access to the DVR, factory: Empty

Other fields are not to be filled in

By clicking OK, the new DVR will appear in the list of devices on the left.

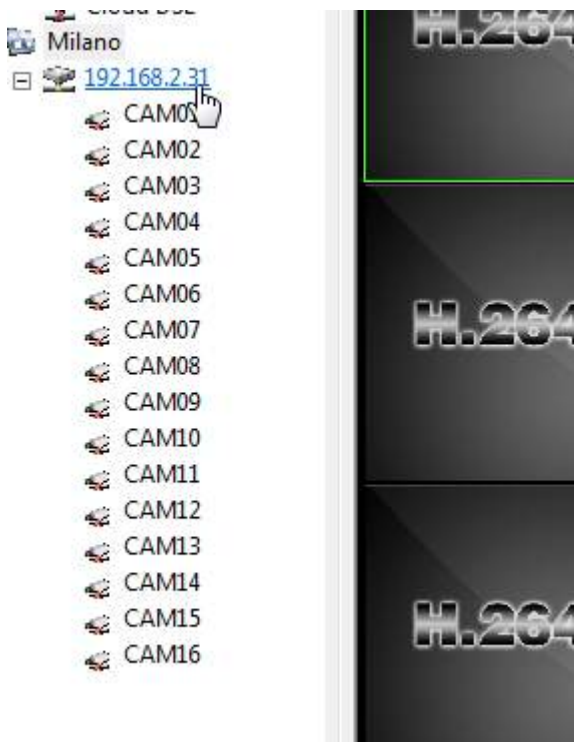


## LIVE Vision camera

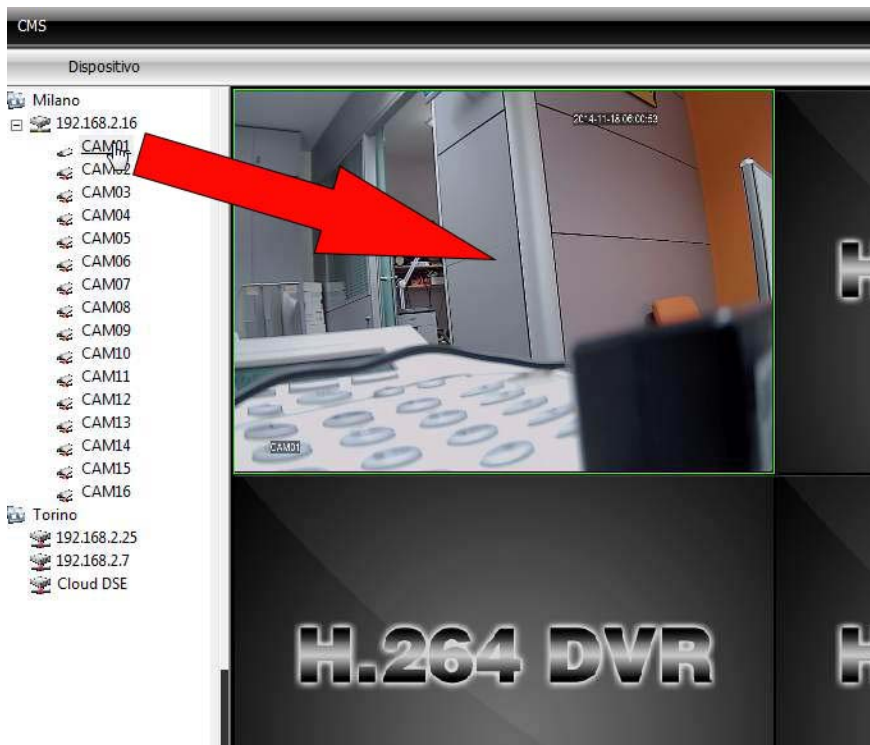
The program allows you to view on-screen real-time cameras organizing them flexibly.

### START LIVE VIEWING

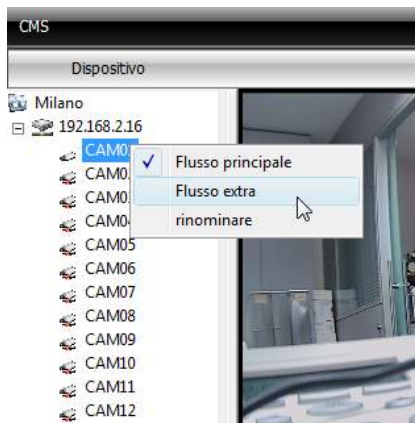
To view the DVR cameras just created, double click on the address of DVR. If the connection is successful they will show camera icons.



To start playback of a camera just drag it on the screen with the mouse in the desired position, or alternatively select the view pane and then double-click the camera icon.



For more control on how to play, you can select the playback pane, and click the right button on the camera icon



This way you can choose to play the main video stream at full resolution or sub lighter stream.

And 'possible to click the right button on the camera to show the context menu



- CLOSE - Closes the video stream active on the panel
- CLOSE ALL WINDOWS - Close all active streaming
- AUDIO - Turn on sound
- LOCAL RECORD - Starts recording the stream on a local HDD
- EXPAND - Inactive
- PHOTOS - Take a real-time photos
- START AUDIO - Enable / stop two-way audio to talk
- CONFIGURE DEVICE - Opens the remote configuration section of the DVR
- COLOR SETUP - Allows adjustment of image parameters
- FULL SCREEN - Take full screen program

In live view you can double-click on a camera to bring it to full screen. E 'can also move a camera in another pane by dragging it with the mouse. And 'possible to mix on a cameras from different DVR screen.

### BREAKDOWN OF THE VIDEO

Under the video frames are the buttons to decide the split screen mode 1,4,8,9,13,16,36 or 64 boxes.



The last button on the right serves to bring the program full-screen viewing of the sun

cameras without the command frame.

### AUDIO

To the right of the split screen commands there is the button to activate or inhibit the audio playback on the PC the camera selected, followed by the volume control



### MANAGING MULTIPLE SCREENS

The CMS program is able to manage the live video max.128 cameras. Since 128 cameras can be displayed simultaneously, live viewing is composed of multiple pages. If you have chosen, for example, the screen subdivision into 16 panels we will have 8 different pages to be able to contain all the cameras 128. E 'can move from one page to another with the buttons / OUT right.



### PTZ CONTROL

If the camera attached allows the PTZ controls of movements and cases you can control them with the panel on the right which is opened by pressing the PTZ button



### ADJUSTING COLOR

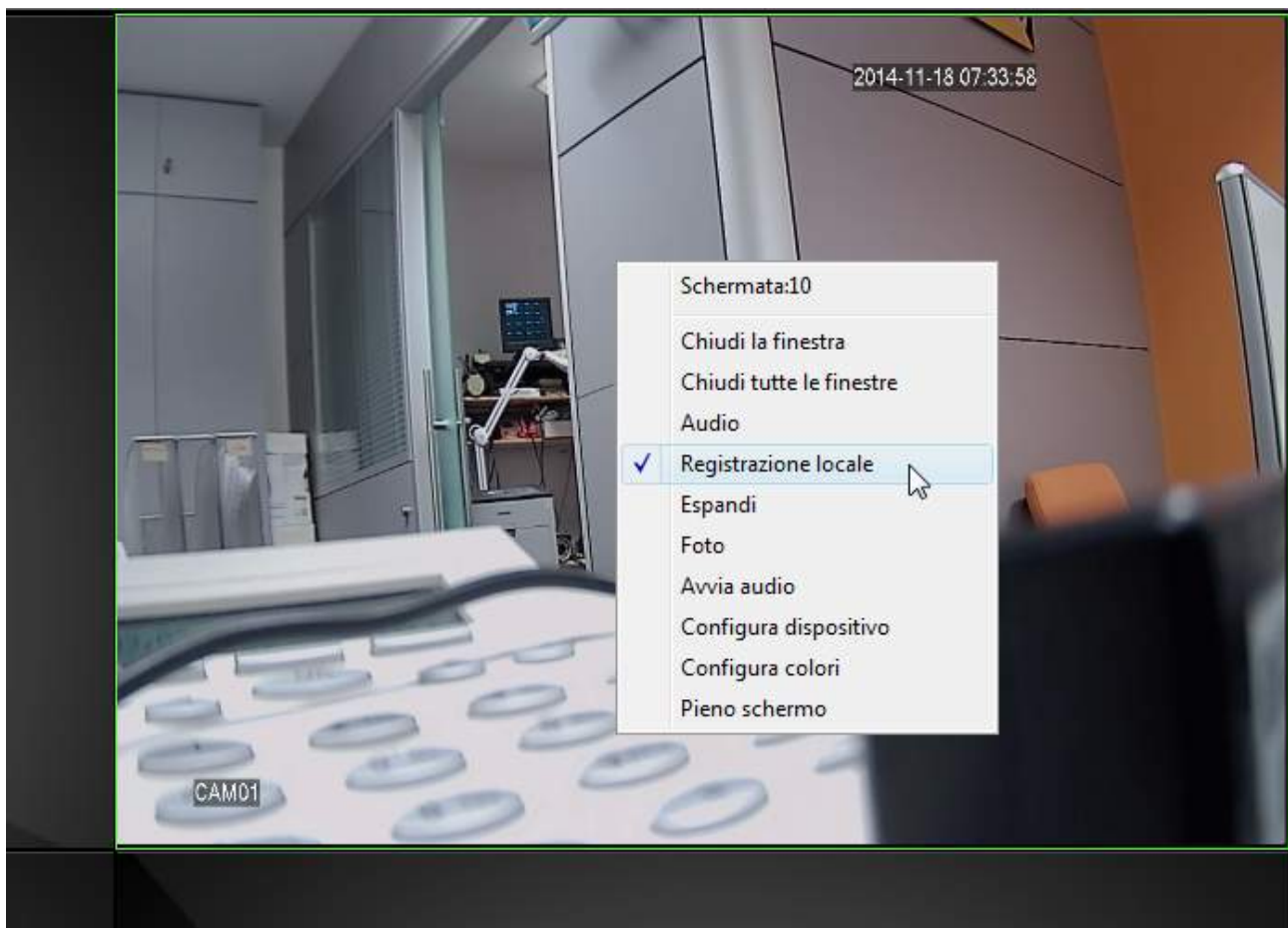
In live view you can adjust the playback picture with the usual brightness control,

Contrast, Saturation and Toni



## Recording live video

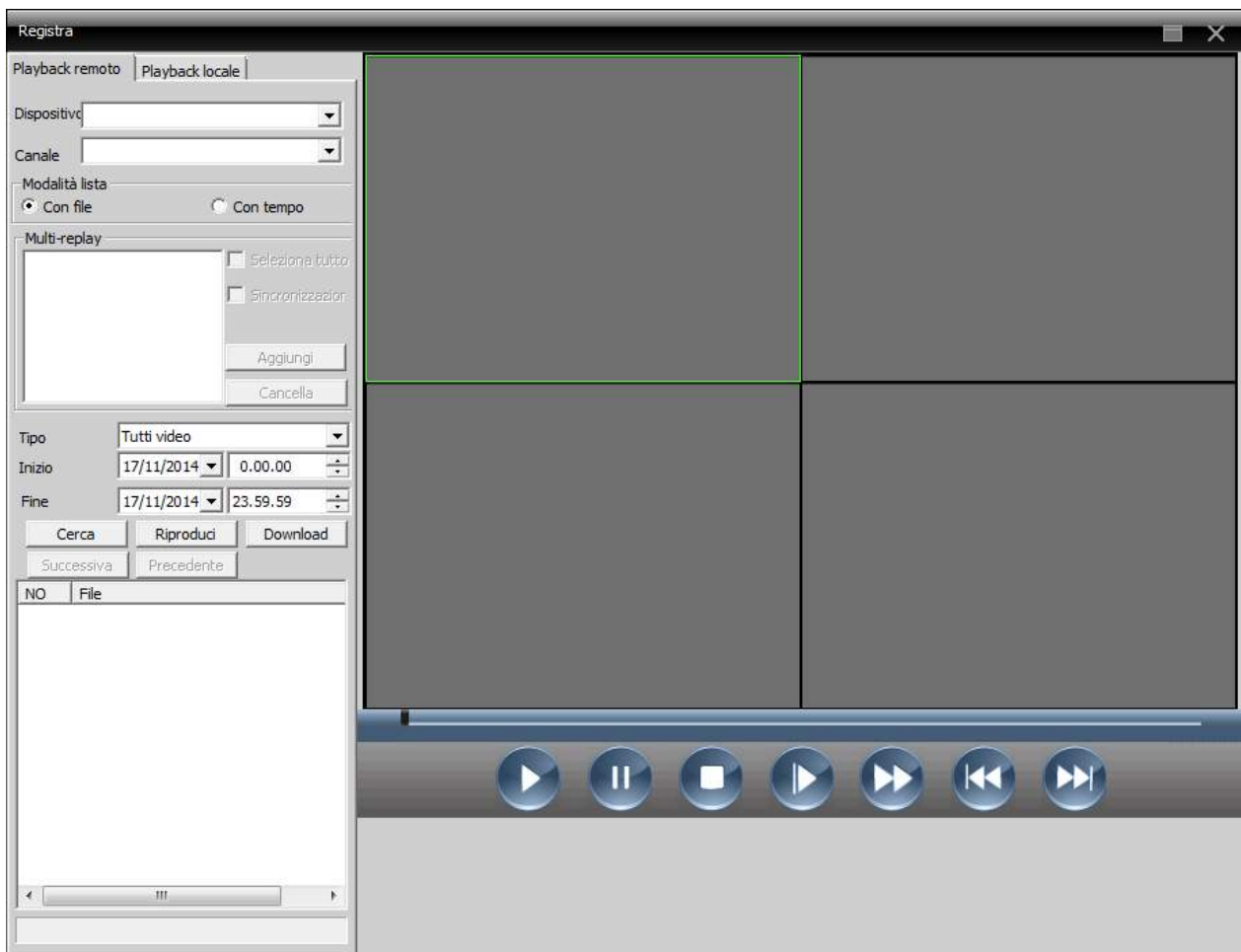
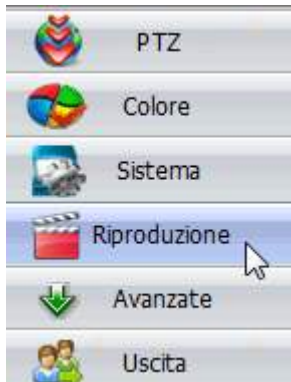
E 'can record local hard disk images that come from the remote DVR. Just bring in the camera frame, click the right mouse button and choose LOCAL RECORDING



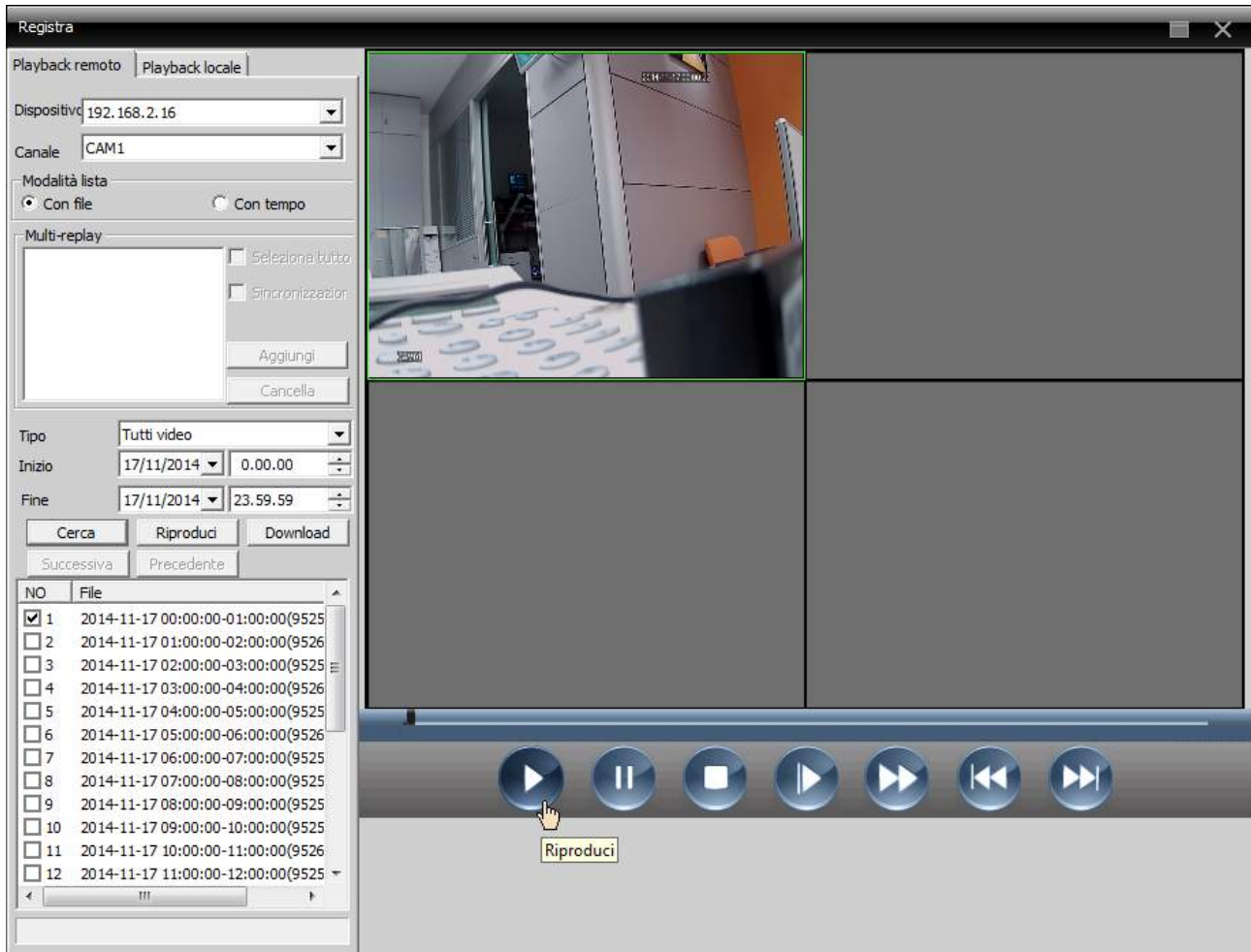
In the system settings (see below) you can set the storage folders. Files are saved in .264 format.

## Playback

With the CMS program, you can also review the records stored in the remote DVR cos' like those stored local HDD. Press the PLAY button on the right.

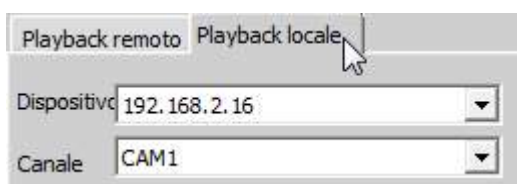


To play video files stored in the remote DVR choose the DVR, set the search criteria and start playback by selecting the file and pressing the PLAY button



The calendar shows which appears highlighted in red on days that have recordings. Click a day to play recordings stored in the remote DVR. In the below timeline they will appear green bars in the presence of continuous or manual recording or red in case of alarm recording.

Similarly you can play back the recorded files on the local PC by choosing the tab PLAYBACK LOCAL

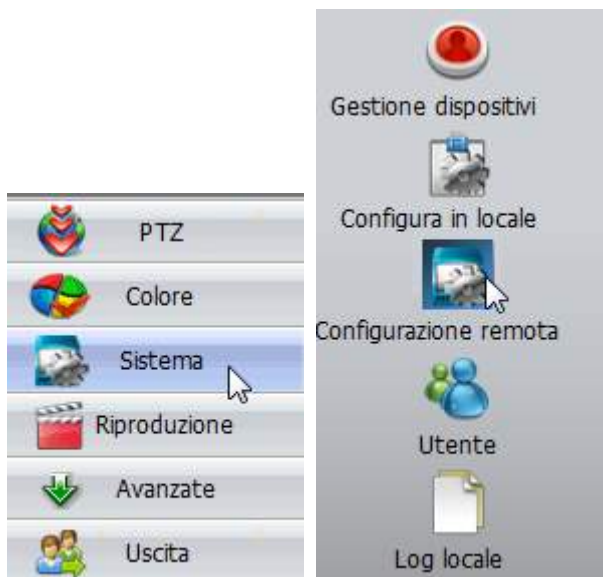


During playback available the usual playback controls

## Tele-programming of the DVR

With Viewclient you can also make the entire programming of the DVR remotely. Click and select SYSTEM CONFIGURATION

REMOTE



Choose DVR for configuration from the left





In this section you can configure, in comfortable tables, all programming options that are accessible through the local menu of the DVR.

In this manual you are not addressed these programming pages as described in detail in the configuration guide,

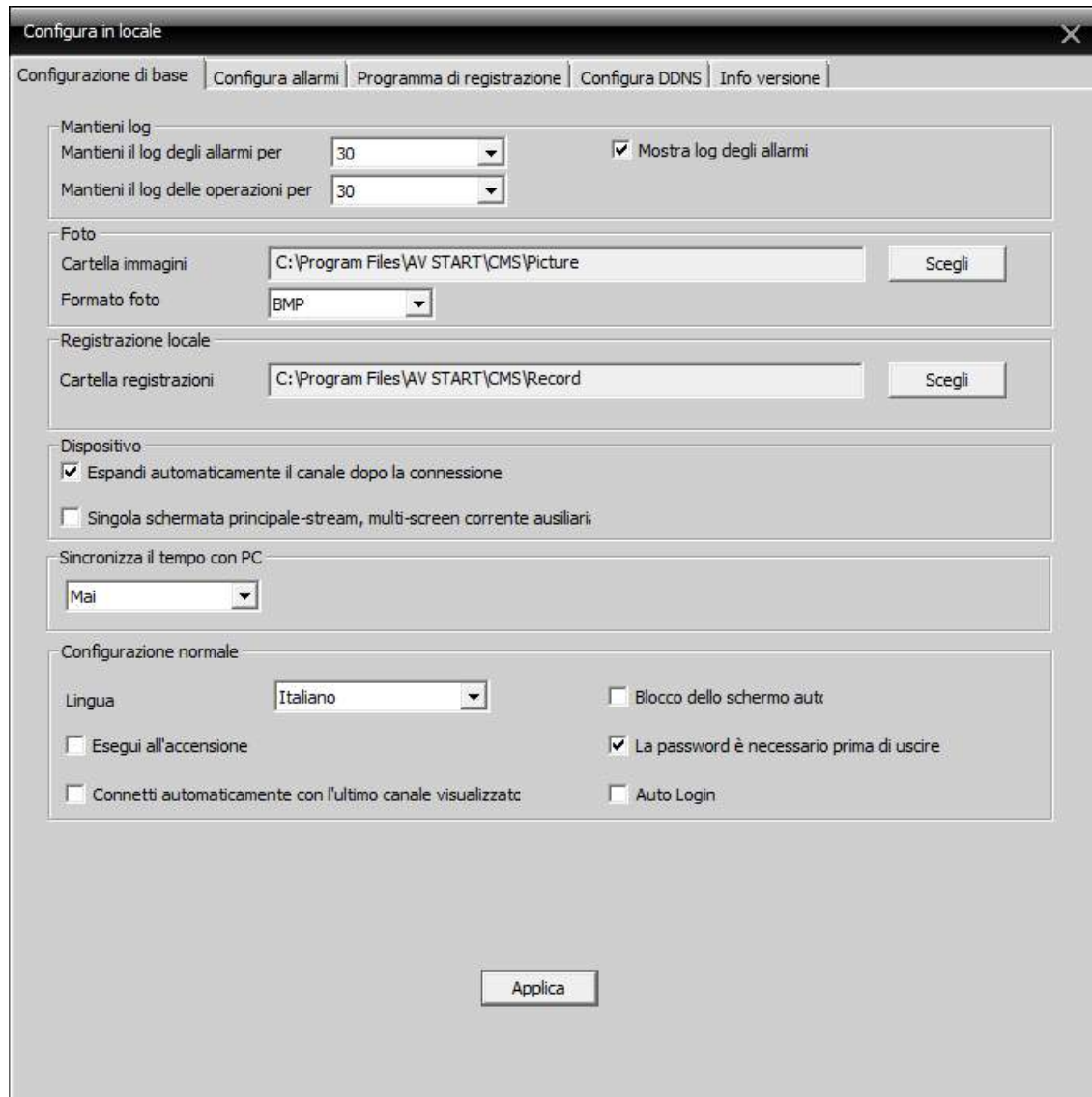
## Program settings

Pressing the SYSTEM CONFIGURATION LOCAL button and you can program some options related to the operation of the CMS program on the local PC.



The configuration window consists of several folders.

### BASIC CONFIGURATION



**Configura in locale**

Configurazione di base | Configura allarmi | Programma di registrazione | Configura DDNS | Info versione

**Mantieni log**

Mantieni il log degli allarmi per: 30 ☐ Mostra log degli allarmi

Mantieni il log delle operazioni per: 30

**Foto**

Cartella immagini: C:\Program Files\AV START\CMS\Picture

Formato foto: BMP

**Registrazione locale**

Cartella registrazioni: C:\Program Files\AV START\CMS\Record

**Dispositivo**

☒ Espandi automaticamente il canale dopo la connessione

☐ Singola schermata principale-stream, multi-screen corrente ausiliari:

**Sincronizza il tempo con PC**

Mai

**Configurazione normale**

Lingua: Italiano ☐ Blocco dello schermo auto

☐ Esegui all'accensione ☒ La password è necessario prima di uscire

☐ Connetti automaticamente con l'ultimo canale visualizzato ☐ Auto Login

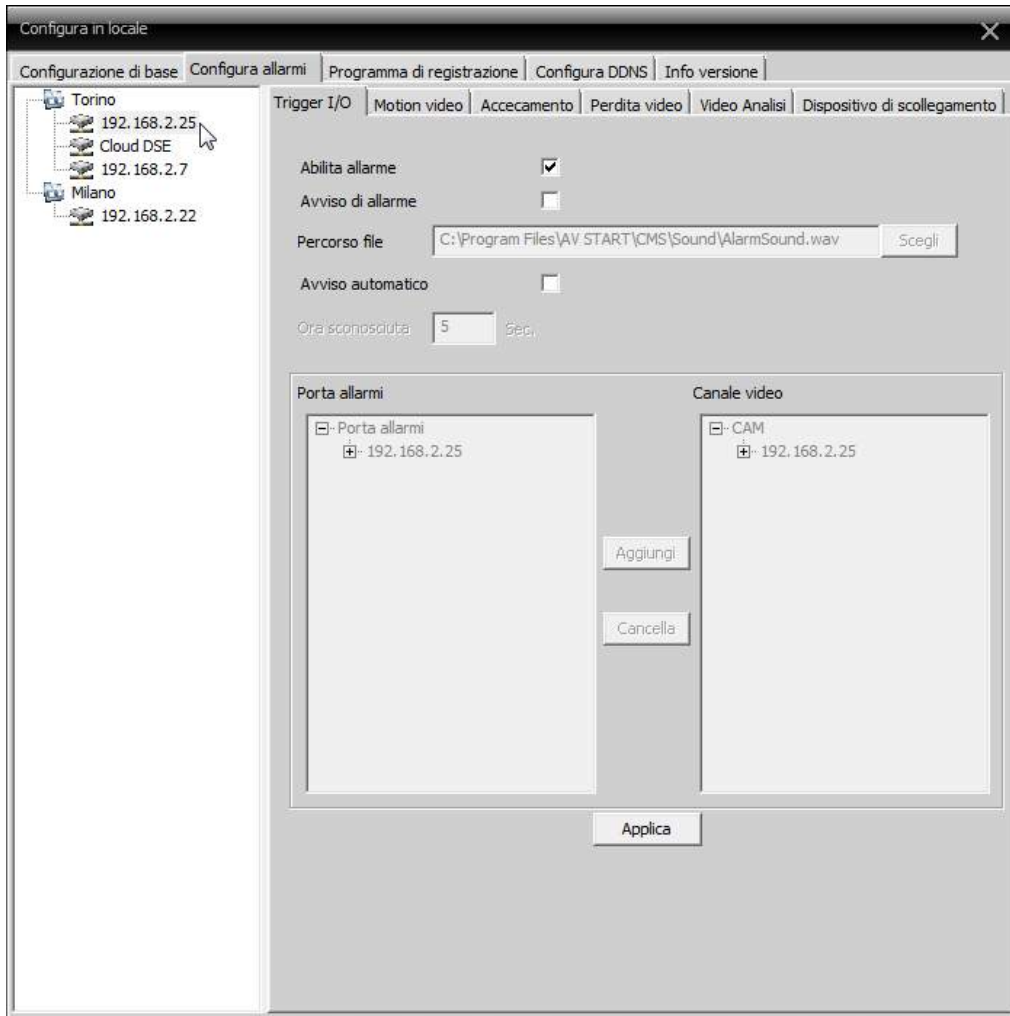
- **KEEP LOG** - Set the size in days of events in the program memory. Two settings for alarm events and user actions ..
- **BRIEFCASE immagini** - Defines the location where the snapshots are saved (photo) performed with the program.
- **PHOTO FORMAT** - defines the format in which the photos (uncompressed BMP or JPG are saved)
- **REGISTRATION CARD** - Defines the location where the recordings made with the program are saved.
- **EXPAND AUTOMATICALLY AFTER THE CONNECTION** - When selected, after



Having established the connection by double-clicking on the DVR automatically expands the tree of the connected cameras. Disabling the feature appears only a + sign beside the icon to expand the tree manually.

- **SINGLE STREAM MAIN SCREEN** - With this option enabled, the program will use the main video stream at full resolution only when the camera is carried in single vision, and use the sub-lighter stream in multi-vision of the camera. And 'advisable to enable this function for less fatigue client PC especially in the management of many cameras.
- **TIME SYNC WITH PC** - Allows you to synchronize the time and date of DVR connected with those of a daily or weekly periodically PC.
- **LANGUAGE** - Language selection. This manual refers to the Italian language.
- **RUN AT POWER** - When enabled, the program automatically starts when Windows starts.
- **CONNECT AUTOMATICALLY WITH THE LAST CHANNEL DISPLAYED** - the program starts automatically establishes the existing connection at the time of the final closure of the program.
- **AUTO LOGIN** - No longer requires a password at startup
- **PASSWORD REQUIRED BEFORE YOU LEAVE** - Enabling this feature to type your password to stop the program.
- **AUTOMATIC LOCK SCREEN** - E 'can enable the operations block after a programmable number of minutes from 1 to. To regain access to the program will require a new login.

### CONFIGURATION ALARMS

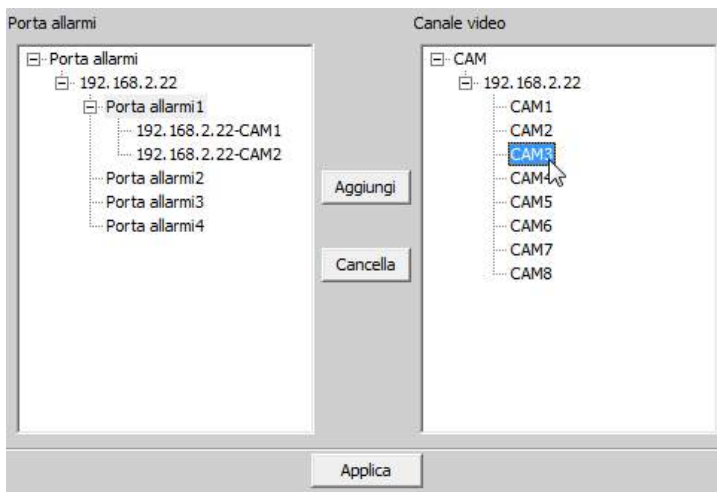


The program is able to receive alarm events from connected DVR. In this section it is possible to determine the behavior of the program in the moment in which they are received alarm events and this allows to create a typical operation of video surveillance stations where it is necessary to manage the different actions according to the DVR that sends the alarm and the type of alarm.

First you must select the DVR in the left column, then in the tabs to the right you set the alert actions that are different depending on the type of alarm. The following alarm types are manageable: Alarm input (I / O), Motion, Blind, Video Loss, Loss connection with DVR. Page Video Analysis is currently not used.

- **ALARM ENABLE** - Enables the alarm actions for the selected DVR left and the event type selected at the top.

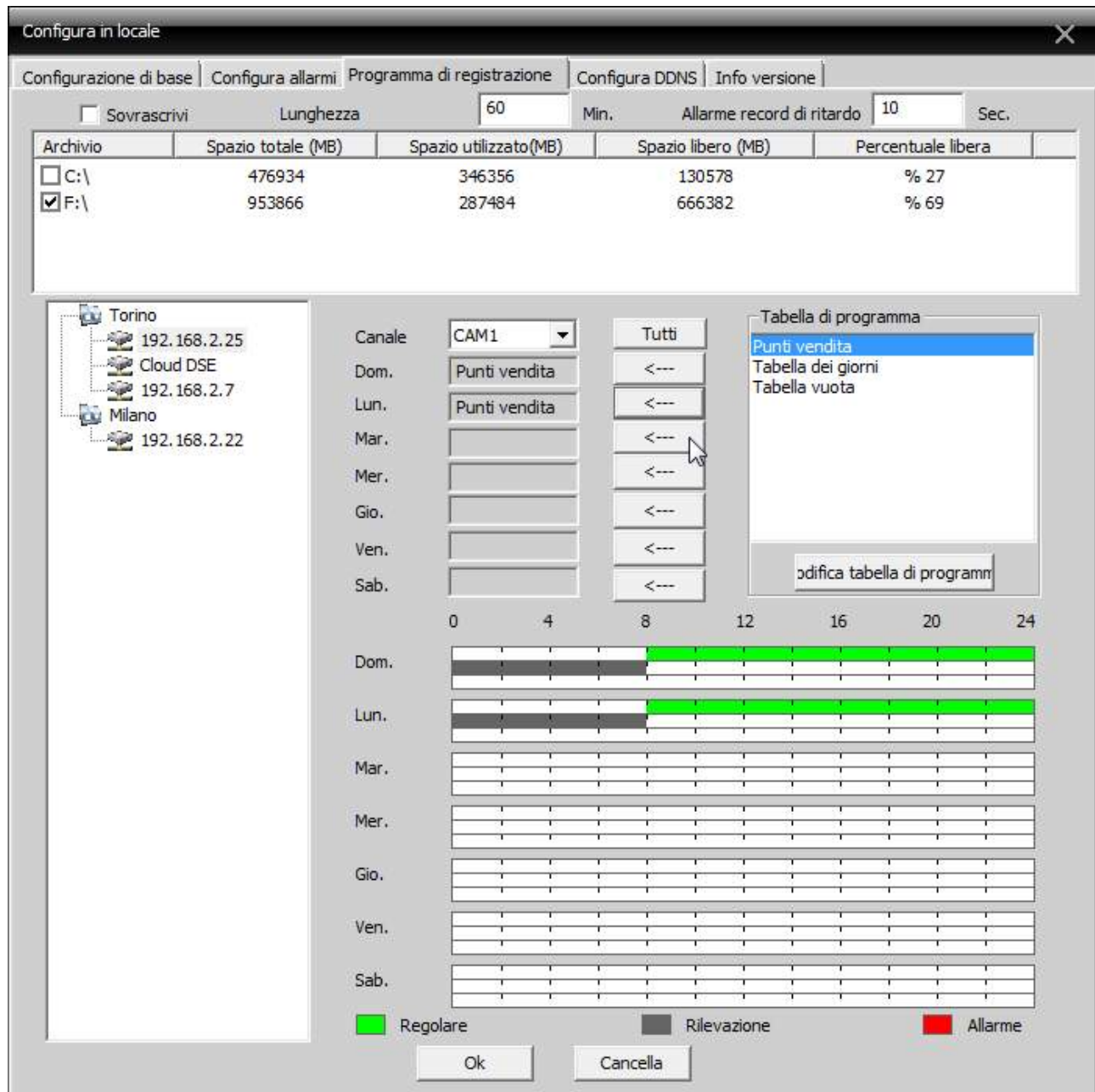
- **ALARM WARNING** - You hear an audible warning to the event is received
- **FILE PATH** - Identify the Hard Disk WAV files on your PC. You can use the default sound or record personalized messages based on the event.
- **NOTICE AUTOMATIC** - At alarm occurrence is brought to full screen the alarmed camera for a set time in seconds in the box below
- **DOOR ALARM / VIDEO CHANNEL** - This option is only available in the schedule for the entrance alarms and allows you to determine which channels bring to full screen when activated by alarm input. As in the following example.



The same type of setting can be found for all events (I / O, Motion, Blinding etc). Some types of event may have less available actions.

### REGISTRATION PROGRAM

The CMS program is capable of recording on the Hard Disk Local incoming images from connected DVR. In this section you set the recording mode



Configura in locale

Configurazione di base | Configura allarmi | **Programma di registrazione** | Configura DDNS | Info versione

☐ Sovrascrivi    Lunghezza: 60 Min.    Allarme record di ritardo: 10 Sec.

Archivio	Spazio totale (MB)	Spazio utilizzato (MB)	Spazio libero (MB)	Percentuale libera
<input type="checkbox"/> C:\	476934	346356	130578	% 27
<input checked="" type="checkbox"/> F:\	953866	287484	666382	% 69

Torino  
192.168.2.25  
Cloud DSE  
192.168.2.7  
Milano  
192.168.2.22

Canale: CAM1    Tutti

Dom. Punti vendita    <---

Lun. Punti vendita    <---

Mar.    <---

Mer.    <---

Gio.    <---

Ven.    <---

Sab.    <---

Tabella di programma  
Punti vendita  
Tabella dei giorni  
Tabella vuota

Modifica tabella di programmi

0    4    8    12    16    20    24

Dom. [Green bar from 8 to 24]

Lun. [Green bar from 8 to 24]

Mar.

Mer.

Gio.

Ven.

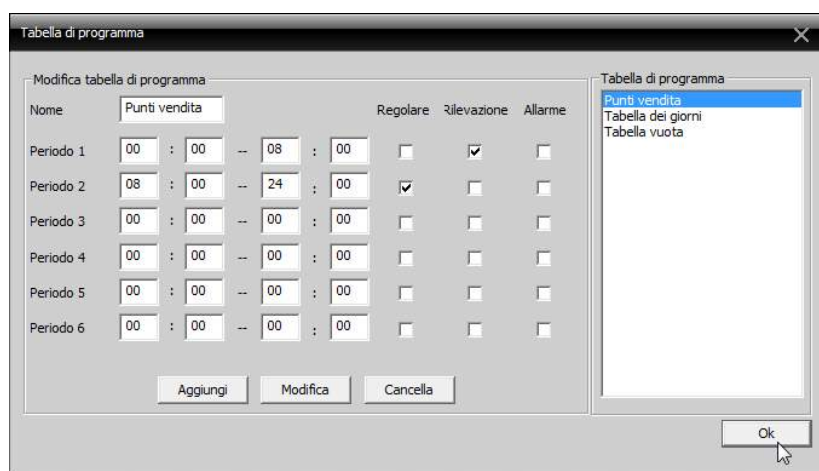
Sab.

Regolare    Rilevazione    Allarme

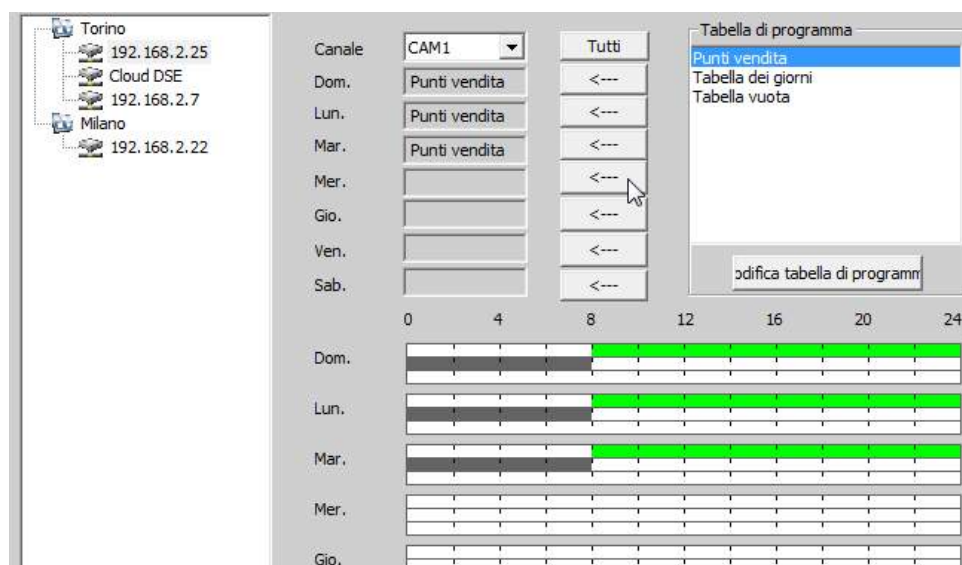
Ok    Cancella

- **OVERWRITE** - By enabling this option the program, once run out of disk space available to, overwrite the oldest files.
- **LENGTH** - Size of video files in minutes
- **ALARM RECORD** - Recording time after alarm coming from DVR

- **SELECTION HDD** - Hard Disk appear in the table of the computer hard disks. E 'must enable at least one disk. It is recommended for continuous recording of installing a dedicated disk recording
- **SELECTION DVR** - DVR Each has its own programmable registration table individually. Select the DVR in the left column.
- **TABLE OF PROGRAM** - E 'can configure the weekly recording schedules, each with a distinctive name and save it to use it in combination with various DVR. In this example, it created a type of programmed recording called Point of Sale.



- **ASSIGNMENTS OF REGISTRATION PROGRAM** - In the middle of the window wall you select a DVR and a channel, then you can set it to program the table from those previously set for each day of the week





## CONFIGURATION DDNS

Section inactive

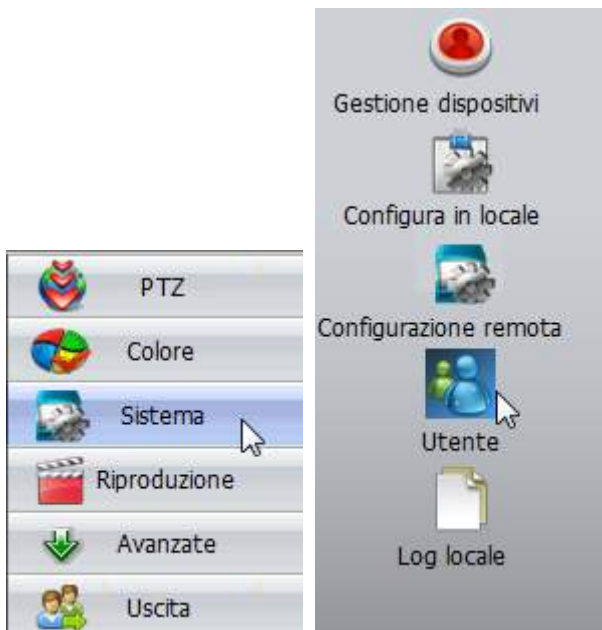
## ABOUT VERSION

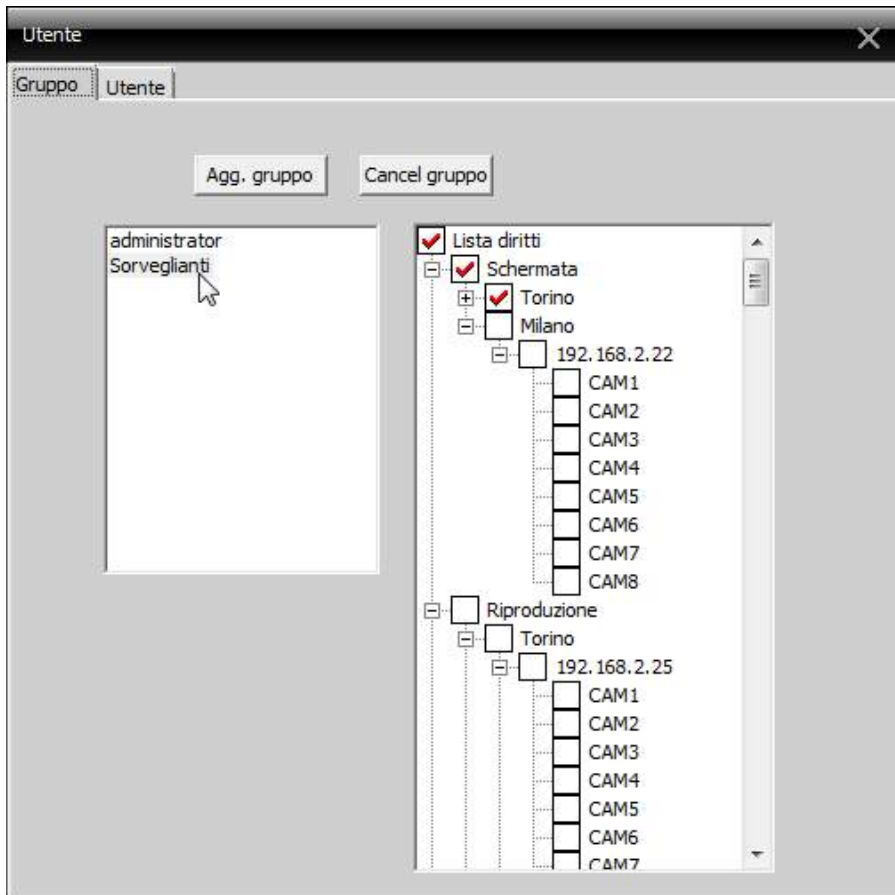
CMS Program information

## User Management

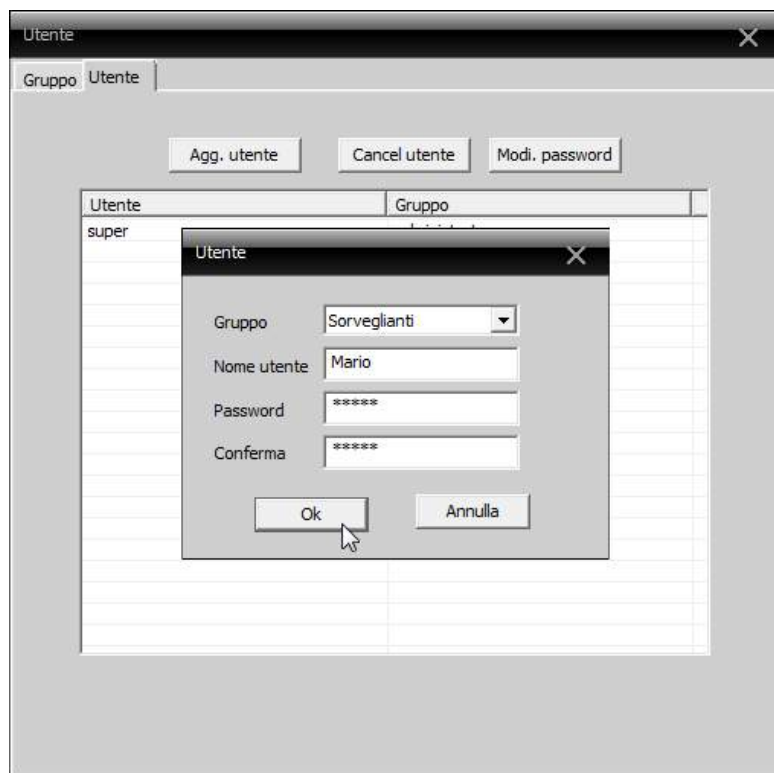
The CMS program is password protected.

E 'can handle many different users each with access to a set number of cameras. Pressing the SYSTEM and USER button, you can manage your password.





- GROUP - E 'can add different groups, each with its own name and a level of access to the various remote cameras and DVRs
- USER - E 'can add users, each with its own user name and password. Each user is combined with a group that defines the access permissions.



## LOG event

The program keeps in memory all the events coming from the connected DVR and the operations carried out by local operators.



The LOG window allows time research and depending on the type of event.

Log locale

Tipo log: Allarme  
Allarme: Tutti  
Cerca:

Ora inizio: 18/11/2014 0.00.00  
Ora fine: 18/11/2014 23.59.59

Precedente Log esport

Nr.	Tipo	Data	Utente	Descrizione
1	Playback	2014-11-18	admin	Remoto CAM1 /idea0/2014-11-17/001/00.00.00-0...
2	Video	2014-11-18	admin	Canale 1 Chiusura avvenuta con successo
3	Operazion...	2014-11-18	admin	Disconnessione Errore di rete
4	Video	2014-11-18 10:51:34	admin	Connessione fallita Non è possibile trovare il disposi...
5	Operazion...	2014-11-18 16:42:52	super	Chiudi CMS
6	Operazion...	2014-11-18 16:43:14	super	Utente:super Accesso
7	Video	2014-11-18 16:43:55	admin	Connessione fallita Non è possibile trovare il disposi...
8	Video	2014-11-18 16:45:42	admin	Connessione avvenuta con successo
9	Video	2014-11-18 16:45:46	admin	Canale 1 Apertura riuscita
10	Configura ...	2014-11-18 16:47:17	super	Configurazione di base
11	Video	2014-11-18 16:47:29	admin	Canale 1 Chiusura avvenuta con successo
12	Operazion...	2014-11-18 16:47:34	admin	Disconnessione
13	Video	2014-11-18 16:47:36	admin	Connessione avvenuta con successo
14	Operazion...	2014-11-18 16:59:01	admin	Disconnessione
15	Configura ...	2014-11-18 16:59:05	super	Configurazione di base
16	Video	2014-11-18 16:59:16	admin	Connessione avvenuta con successo
17	Video	2014-11-18 16:59:22	admin	Canale 1 Apertura riuscita
18	Video	2014-11-18 16:59:26	admin	Canale 1 Chiusura avvenuta con successo
19	Operazion...	2014-11-18 16:59:26	admin	Disconnessione
20	Video	2014-11-18 16:59:30	admin	Connessione avvenuta con successo
21	Video	2014-11-18 16:59:44	admin	Canale 1 Apertura riuscita
22	Operazion...	2014-11-18 16:59:51	super	Chiudi CMS
23	Operazion...	2014-11-18 17:00:03	super	Utente:super Accesso
24	Video	2014-11-18 17:00:19	admin	Connessione avvenuta con successo
25	Video	2014-11-18 17:00:19	admin	Canale 1 Apertura riuscita
26	Configura ...	2014-11-18 17:02:02	super	Configurazione di base
27	Operazion...	2014-11-18 17:02:09	super	Chiudi CMS
28	Operazion...	2014-11-18 17:02:20	super	Utente:super Accesso
29	Configura ...	2014-11-18 17:04:13	super	Configurazione di base
30	Configura ...	2014-11-18 17:05:30	super	Configurazione di base
31	Configura ...	2014-11-18 17:13:46	super	Configurazione di base
32	Operazion...	2014-11-18 17:13:48	super	User:super Login
33	Configura ...	2014-11-18 17:14:57	super	Base Config



## ADVANCED FEATURE

The program contains a section of advanced features. This section is planned for future development and is not functional at the moment.