

Video recorders Series DH

DVRs for analog cameras, 960H, HD-SDI



Viewclient Program Manual

How to install and use the client program to the DVR

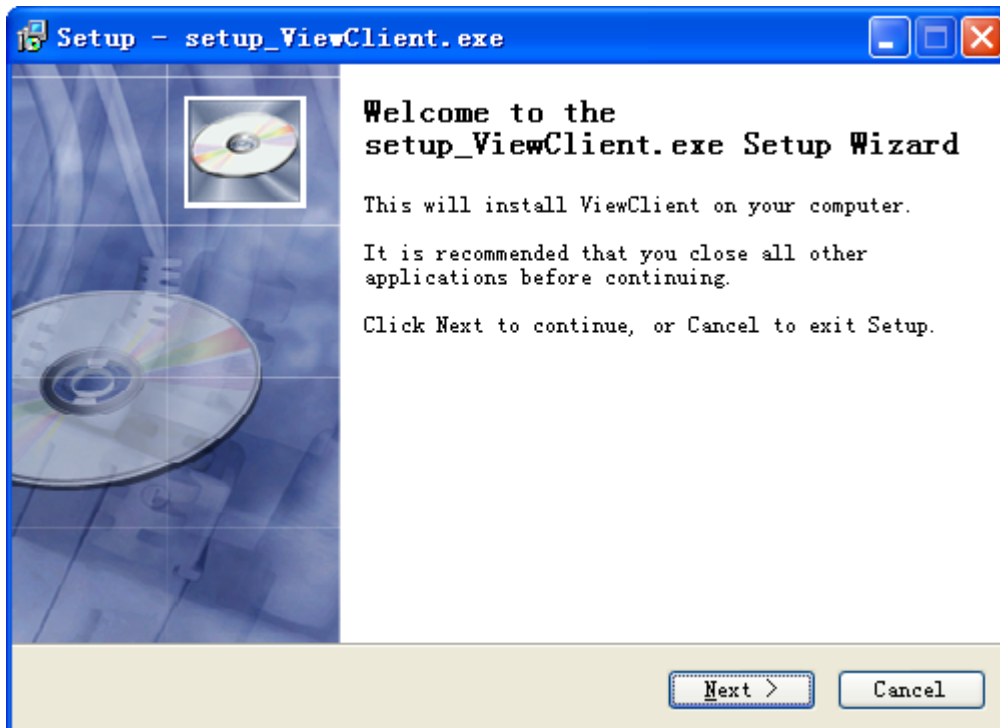


Contents of this handbook

This manual describes how to install and use the Viewclient program that allows centralized management of multiple DVRs RH Series from a single computer. The Windows program is included on the CD supplied with the DVR. Remember that remote access to a single DVR is not necessary to use Viewclient, but you can also simply use Internet Explorer, as described in the installation manual.

Installing the program

The viewclient program is on the CD supplied with the DVR. To install it you must double click on SETUP VIEWCLIENT and follow the installation steps.



The program is only available in English and is not protected by security codes or keys. You can install it freely on as many computers as you want.

After installation, you can launch the program by double-clicking on VIEWCLIENT.

LOG-IN LOCAL AND LOG-IN ON CLOUD SERVER

The program is password protected. There are two options of LOG-IN.

The first log-in mode is defined LOCAL and lets you work with Viewclient on your PC. This is probably the mode you choose the first access. As in the DVR factory password is:

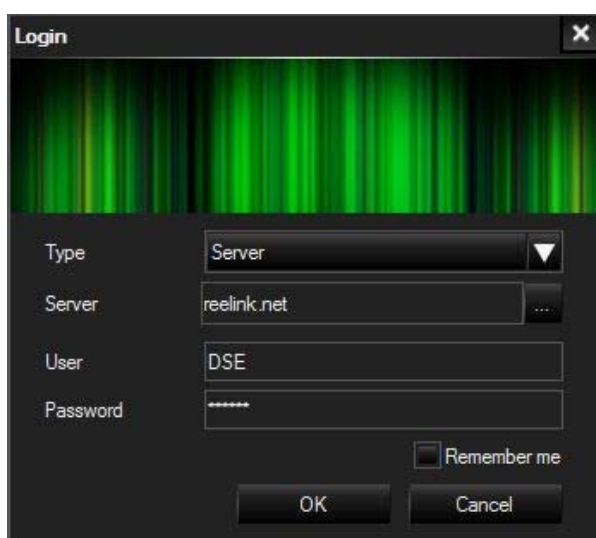
USERNAME: admin PASSWORD: (leave blank)



The second mode of LOG-IN SERVER is defined and allows you to log in directly to one of the free services available for CLOUD DVR Series DH users.

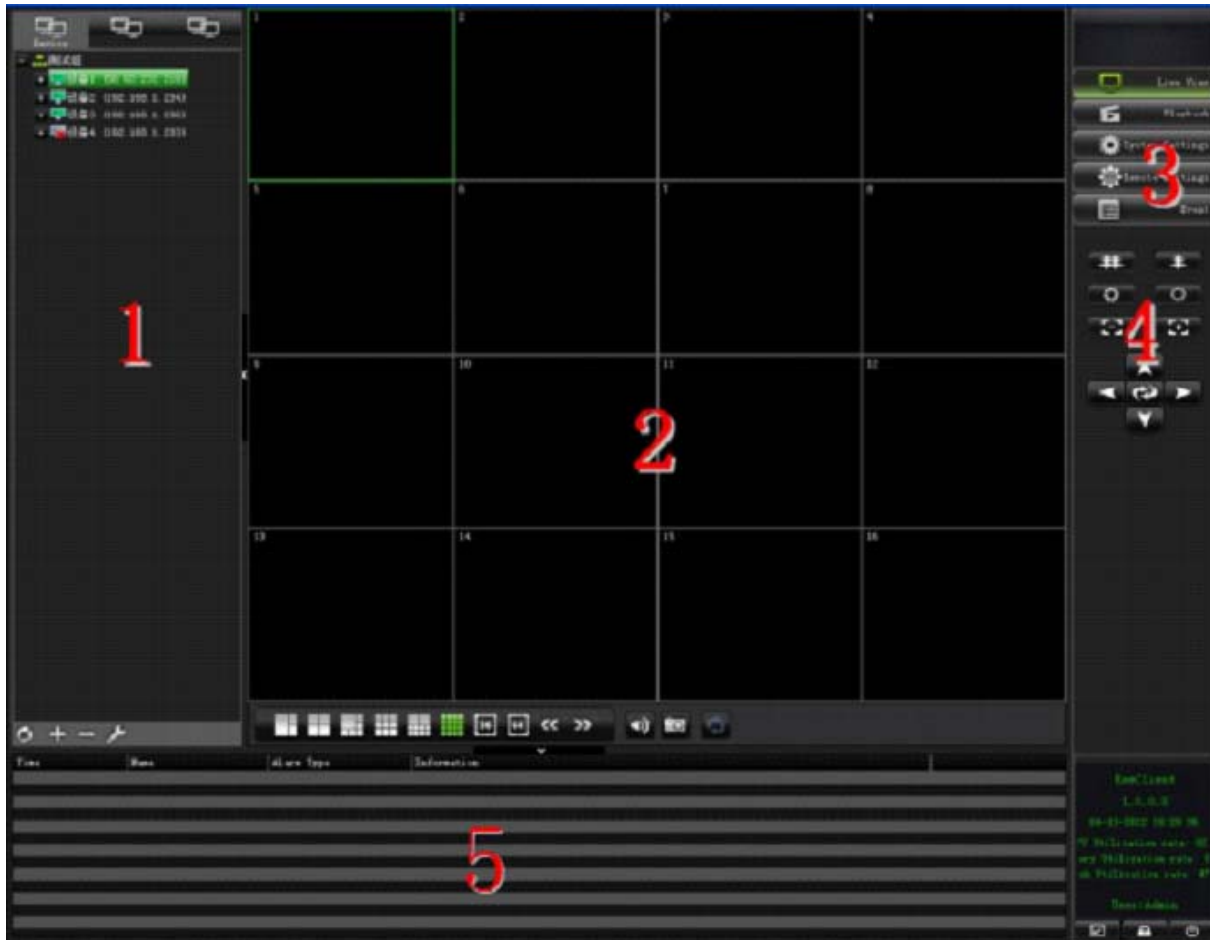
These services REELINK.NET and 88110.NET, are explained in detail in the installation manual and allow you to create an account and to reach via the Internet also many DVR without the need for static IP, DDNS and router configuration.

Choosing the type of LOG-IN: SERVER will not have access to DVR set on the local PC but to all the DVR you have entered in the configuration pages and REELINK 88110. server (in regard to the installation manual)



In the type of LOG-IN to the server you input CLOUD service to which you are subscribed

(REELINK.NET or 88110.NET) and the username and password you registered on the site. For more details on CLOUD free services included for DVR DH series see the installation manual.

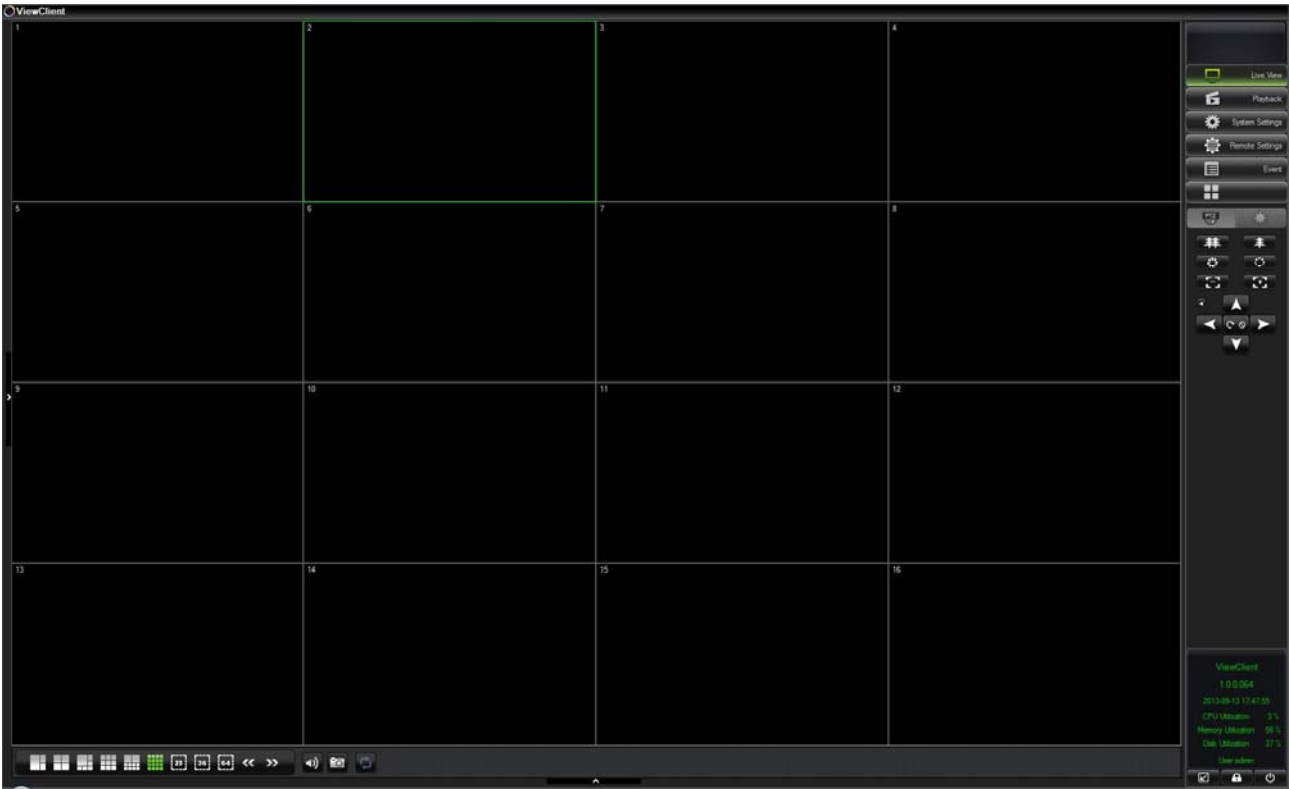
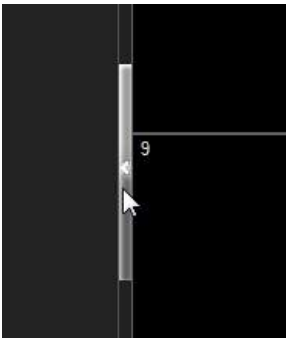


The main window of Viewclient is divided into 5 areas:

1 - Area of the equipment (DVR list managed by the program) 2 - Boxes Video 3 - Functions

4 - Controls PTZ speed dome cameras 5 - Information Panel

To maximize the viewing area it is possible to hide the areas 1 and 5 by clicking on the appropriate tabs.



Links to DVR

In order to use ViewClient you must first provide the data for or to remote DVR you intend to manage.

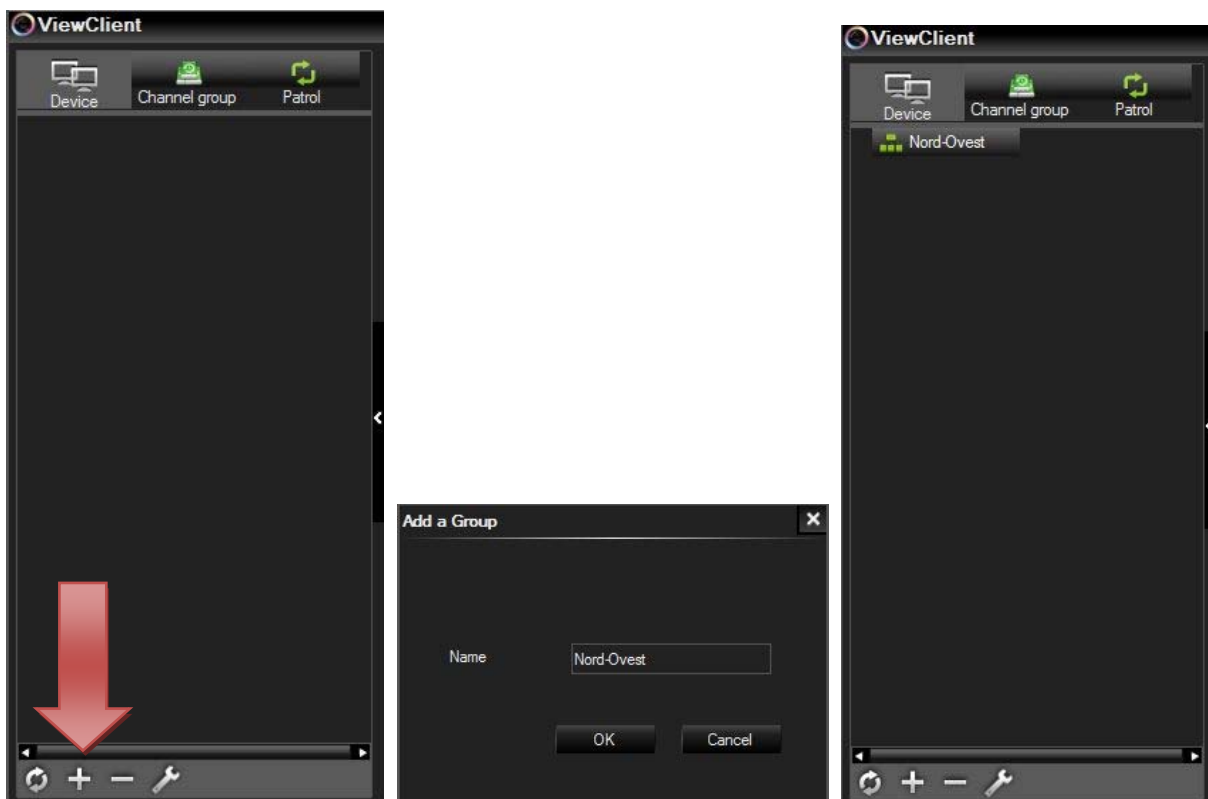
ADDING A NEW GROUP

ViewClient The program is designed to centralize control of many DVR in one PC.

In order to manage a number of DVR with more efficiency the program allows you to divide them into groups. The ViewClient groups as a Windows folder within which you can include one or more DVRs. If for example we are setting the centralization of several DVRs installed in a chain of stores, it might be a good idea to create some groups indicating a number of geographic areas.

The first thing to do therefore is to create one or more groups.

To create a new group, click the + sign to the left and enter the group name





ADD A NEW DVR

Inside the newly created group, you can add a first DVR. Select the group and press the + button again, or click on the group with the right mouse button and select ADD A DEVICE

A screenshot of the 'Add a Device' dialog box in a software interface. The dialog has a dark gray background and a title bar with the text 'Add a Device' and a close button (X). It contains several labeled input fields: 'Device type' (a dropdown menu showing 'DVR'), 'Group' (a dropdown menu showing 'Nord-Ovest'), 'Name' (a text field with 'Maglio Franco - Gassino T.se'), 'IP' (a text field with '96.23.45.67'), 'Port' (a text field with '9000'), 'Web Port' (a text field with '80'), 'Channel Count' (a text field with '4'), 'Transmit Server IP Address' (an empty text field), 'User' (a text field with 'admin'), 'Password' (an empty text field), and 'Stream setup' (a dropdown menu showing 'Main Stream'). At the bottom right, there are two buttons: 'OK' and 'Cancel'.

In this mask fit the data needed to make the connection to the DVR. DEVICE TYPE - Set DVR

GROUP - The group number of the DVR you are setting NAME - Identification name of DVR

IP - IP address of the DVR. Here you can enter the internal IP address of the network or the Internet IP address of the DVR. In this box you can also specify the ID of the DVR using the configuration P2P

PORT - The port of DVR data as set in the DVR network setup WEB PORT - The port of DVR WEB CHANNEL COUNT as set in the DVR network configuration - number of DVR channels. E 'can set the total number of dvr channels, or a lower number if you are not using all channels.



TRANSMIT SERVER IP ADDRESS - Normally you do not need to set this parameter unless you intend to use a transmission server to exceed the maximum number of four simultaneously connected to each client DVR. In this case you can specify the IP address of the server.

USER - user name to access the DVR, factory setting: admin PASSWORD - Password for access to the DVR, factory: Empty

STREAM SETUP - You choose whether to receive the DVR from the main stream with higher resolution or the sub-lighter stream

By clicking OK, the new DVR will appear in the list of devices on the left.

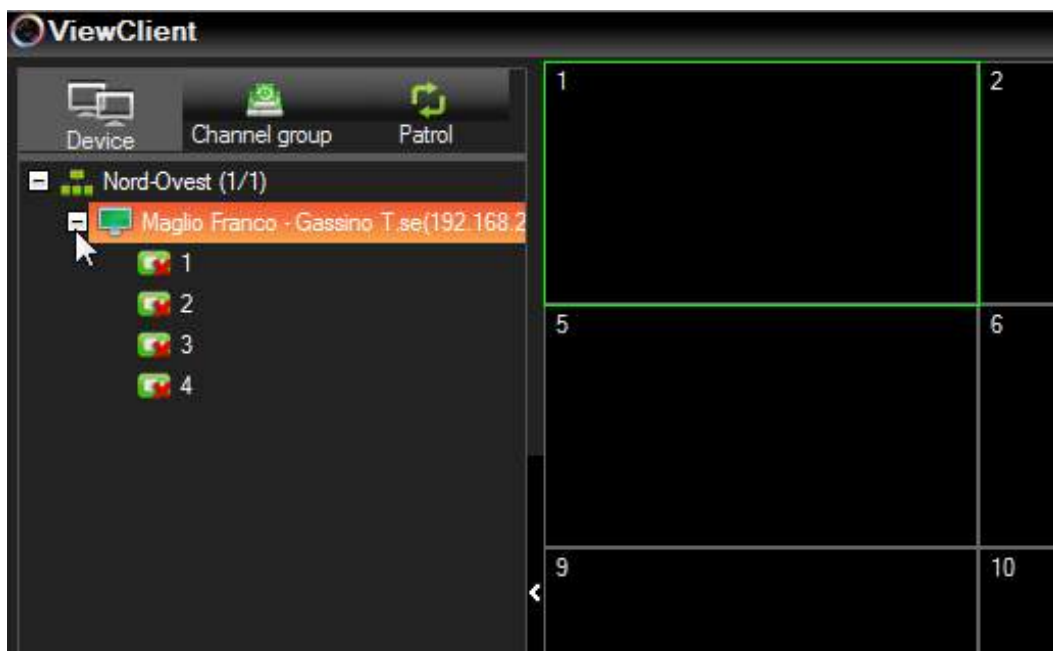


LIVE Vision camera

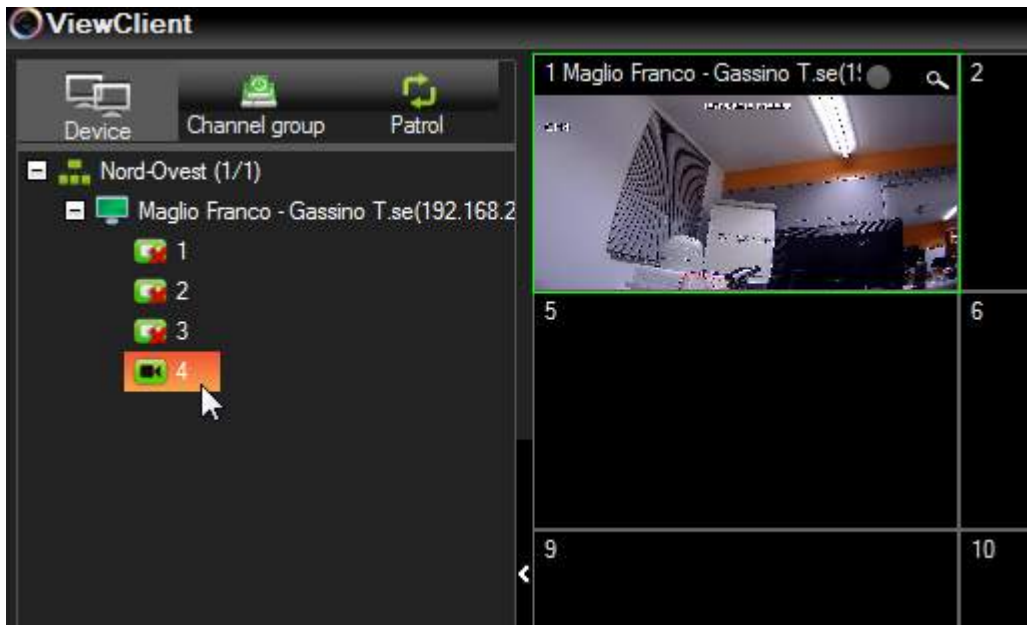
View client allows you to view on-screen real-time cameras organizing them flexibly.

START LIVE VIEWING

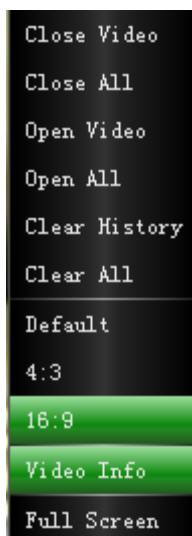
To view the DVR cameras just created, click on the + icon at the DVR side to display camera icons.



Double-click on a camera to start camera playback.



E 'you can also start playback by clicking the right button in the Video



CLOSE VIDEO - Close streaming video active on the panel

CLOSE ALL - Close all active OPEN VIDEO streaming - Start streaming video active in the ALL OPEN - Start all active streaming

CLEAR HISTORY - Close streaming video of the frame and delete the camera's location in memory

CLEAR ALL - Close all active streaming and clear the camera memory location

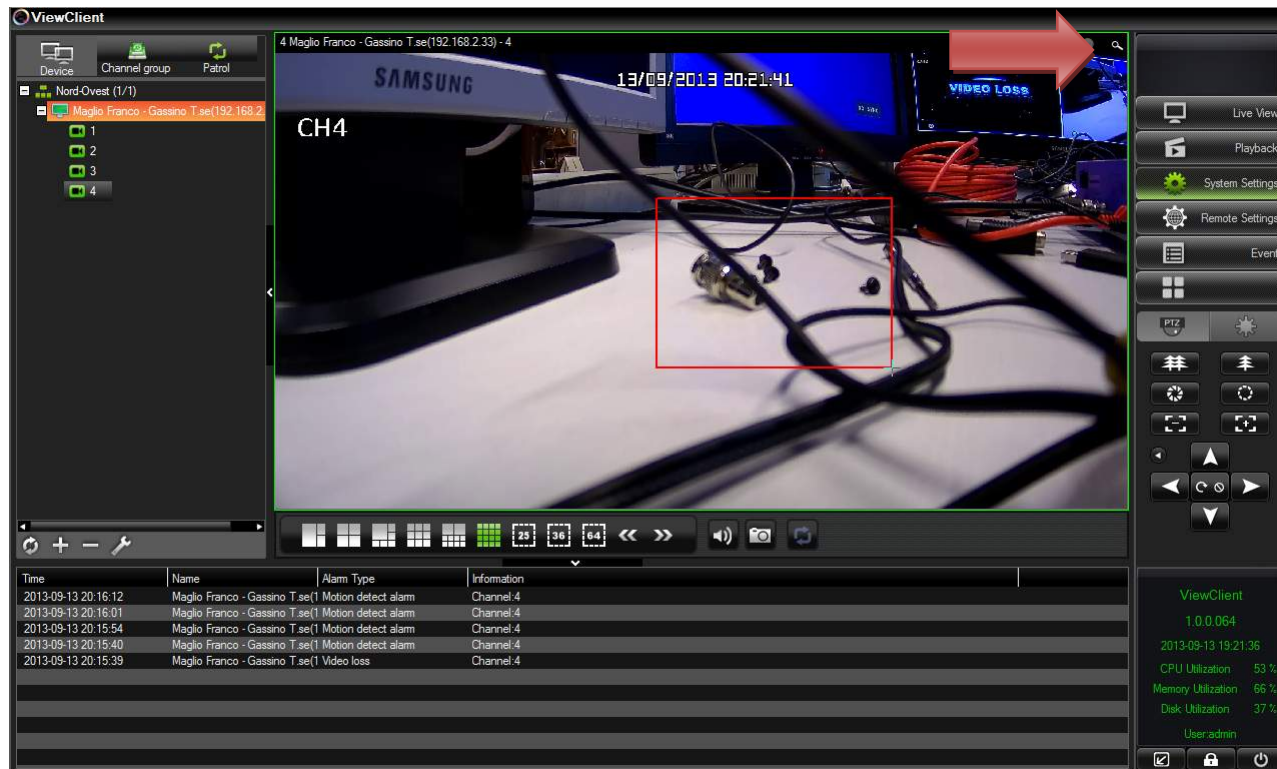
DEFAULT - Watch video adapting it to the size of the visual box 4: 3 - Watch video in 4: 3 16: 9 - Watch video in 16: 9 FULL SCREEN - Take full screen viewing.

E 'can double-click on a camera to bring it to full screen. E 'can also move a camera in another pane by dragging it with the mouse. And 'possible to mix on a cameras from different DVR screen.

DIGITAL ZOOM

In the top right of each visual frame is an icon to activate zoom digital zoom similarly to what can be done locally on the DVR. By activating the zoom it is possible to define a magnification with the mouse and move the image. Press again to return the lens

the vision 1: 1.



BREAKDOWN OF THE VIDEO

Under the video frames are the buttons to decide the split screen mode 3,4,6,9,10,16,36 or 64 boxes.



The arrow keys NEXT / PREVIOUS on the right are used to change the cameras displayed on-screen. For example, if you are viewing the vision of the cameras 1-4 Quad clicking NEXT will move the cameras 5-8.

AUDIO

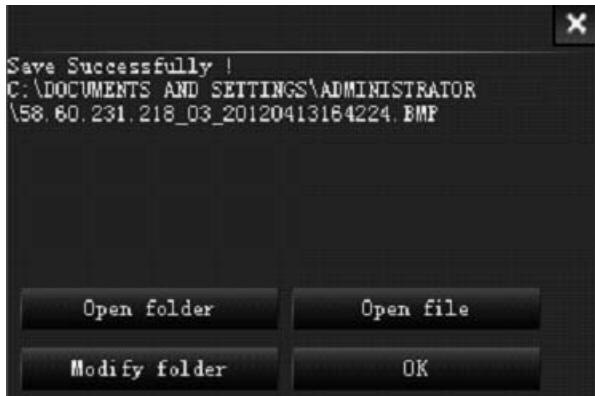
To the right of the split screen commands there is the button to activate or inhibit the audio playback on the camera selected PC



PHOTOS

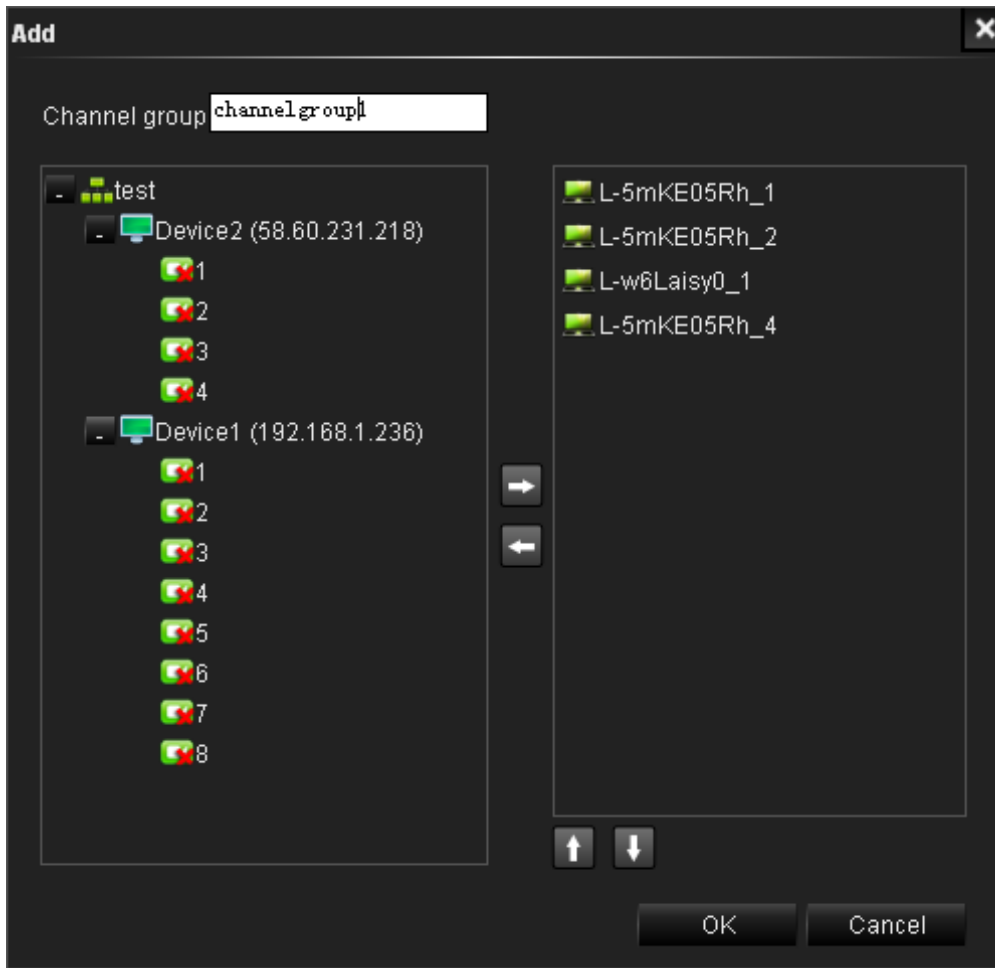
To save a frame in real time, press the SNAPSHOT button and check the save with the window that appears later



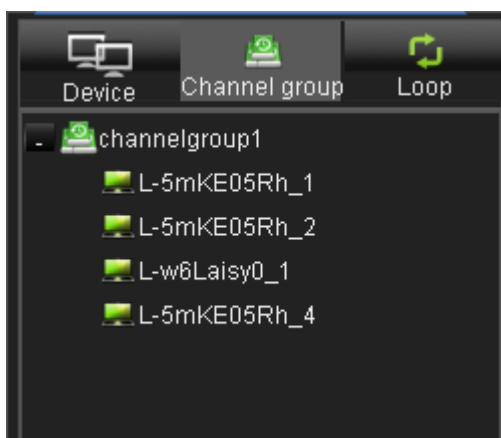


GROUPS

ViewClient allows you to group cameras from different DVRs into homogeneous groups made some logical principle. For example, you can combine in a group all the cameras filming the front of several hotels. To add a new group, select the CHANNEL GROUP tab and press +.

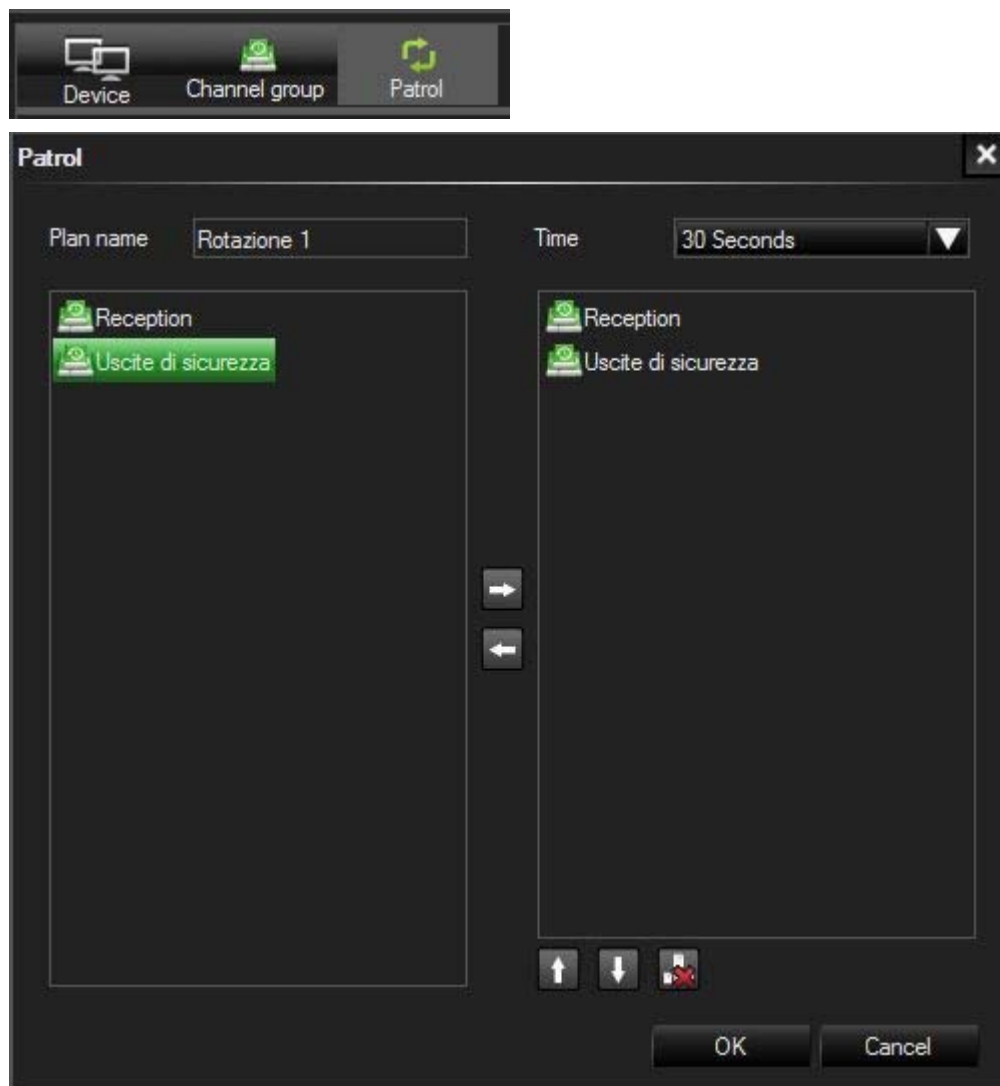


To move from the grouping of cameras per DVR grouping for groups just click on the tab CHANNEL GROUP



PATROL (SEQUENCE)

And 'possible to program cyclical rotations screen of different groups of cameras set. Press the tab and the button + PATROL



E 'can set the cyclic rotation by inserting the groups in the desired order and setting the residence time in each group of the screen.

E 'can launch cyclical scans set Patrol clicking on the tab and double-click on the name of the desired patrol. To stop scanning, press the START / STOP button PATROL



PTZ CONTROL

If the connected camera allows the PTZ controls of movements and cases you can control them with the panel on the right



Recording live video

With ViewClient local hard disk, you can record images that come from the remote DVR. Just bring in the camera box and click the round icon at the top right or gray to green to indicate the current recording.

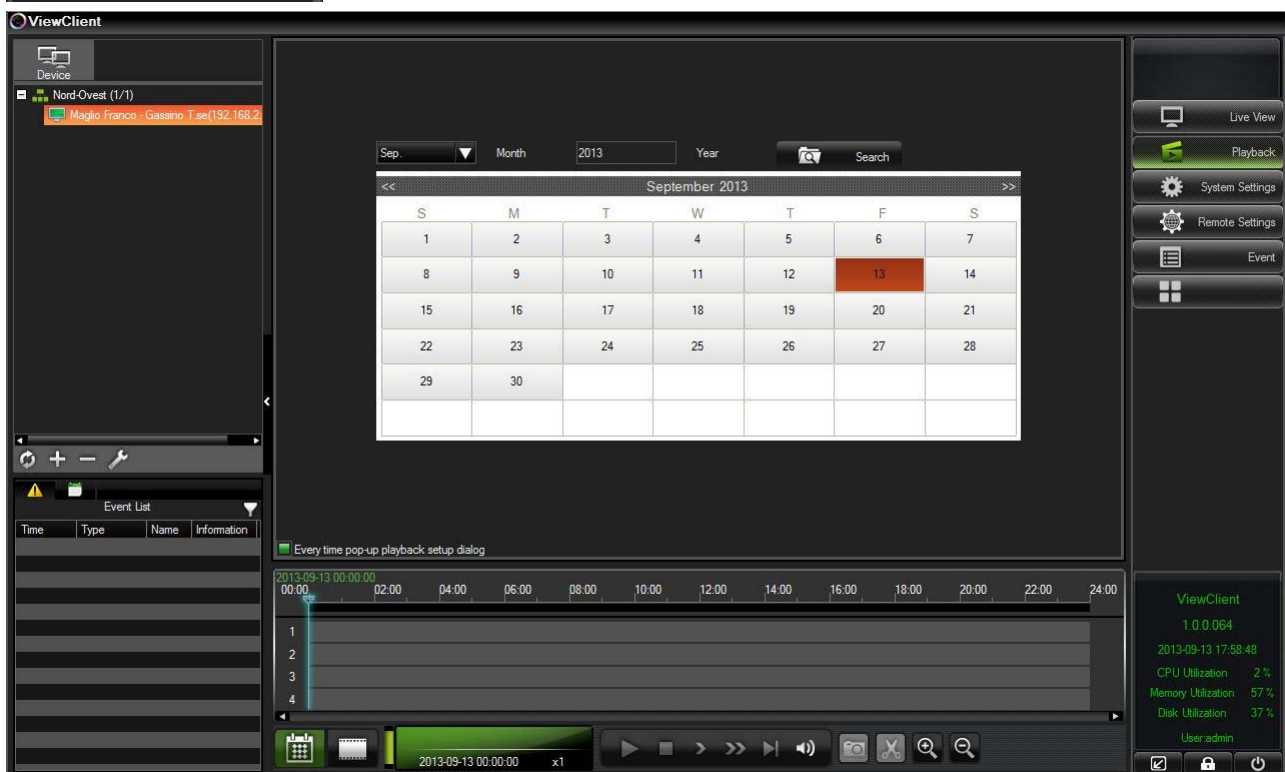


In the system settings (see below) you can set the storage folder and overwrite options.

Files are saved in .264 format and can be played with this player Mini Player on the CD.

Playback Remote Video

With Viewclient you can also review the records stored in the remote DVR. Press the PLAYBACK button on the right and double click on the DVR you want to query

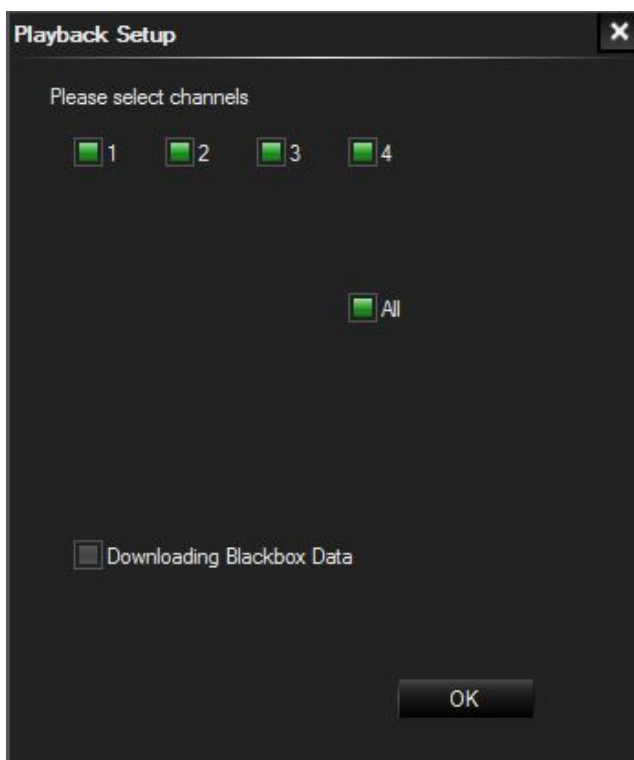


The calendar shows which appears highlighted in red on days that have recordings. Click a day to play recordings stored in the remote DVR. In the below timeline they will appear green bars in the presence of continuous or manual recording

or red when in alarm recording.



Move the time bar on the time at which you want to play and click the PLAY button. You are prompted to select the cameras to be played and you can start playback by confirming with OK.





During playback available the usual playback controls



Play / Pause



Stop. Exits playback in order to choose another day in the calendar playback slowed 1/2 to 1/32 Fast playback



from 2x up to 32x playback frame by frame Volume Control



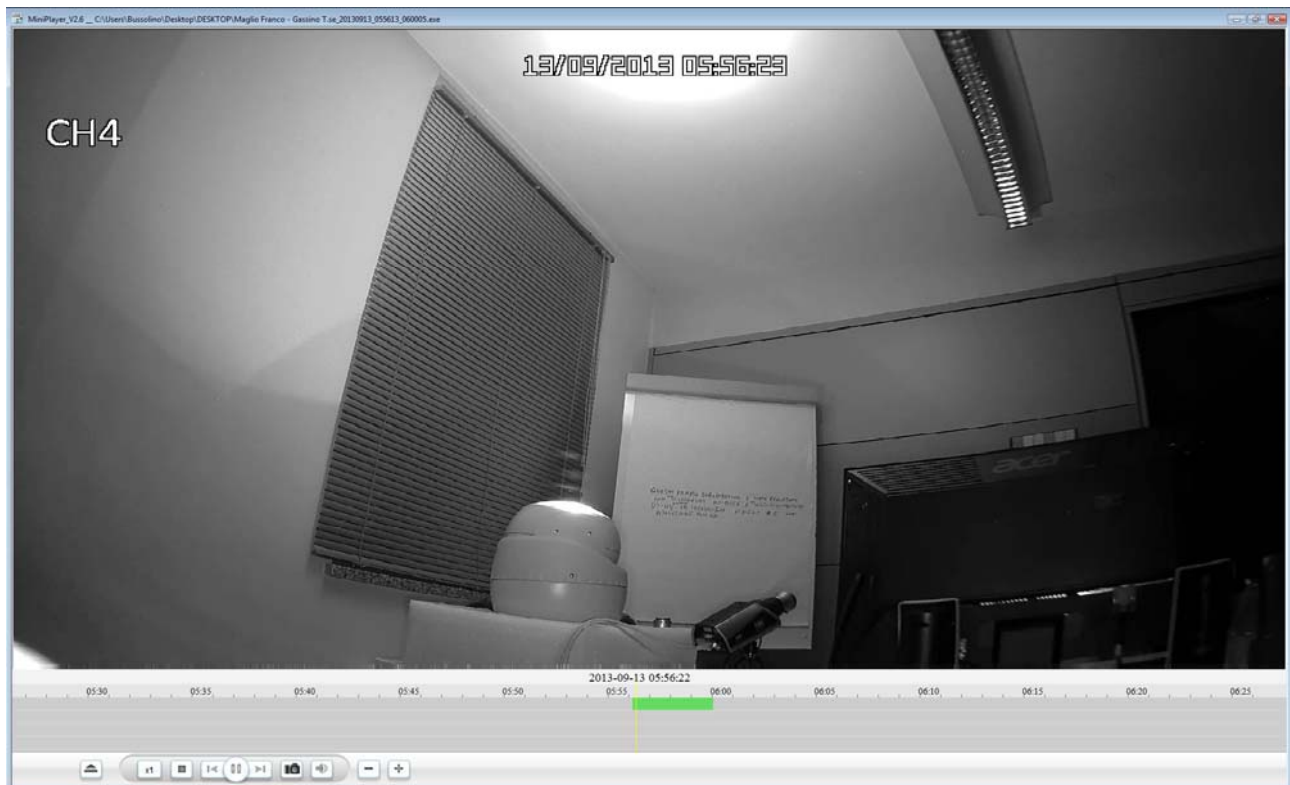
Capturing a frame



Enlarge or reduce the timeline

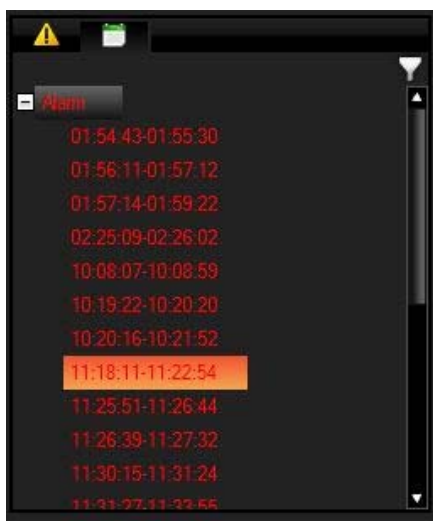


Cut a clip to be saved on the hard disk. They appear on the timeline 2 time slots that you can drag to define the beginning and end of the clip. E 'can save the format in .264 clip (native of the program) or export it to an .EXE file that contains the reader and can be played on any computer.



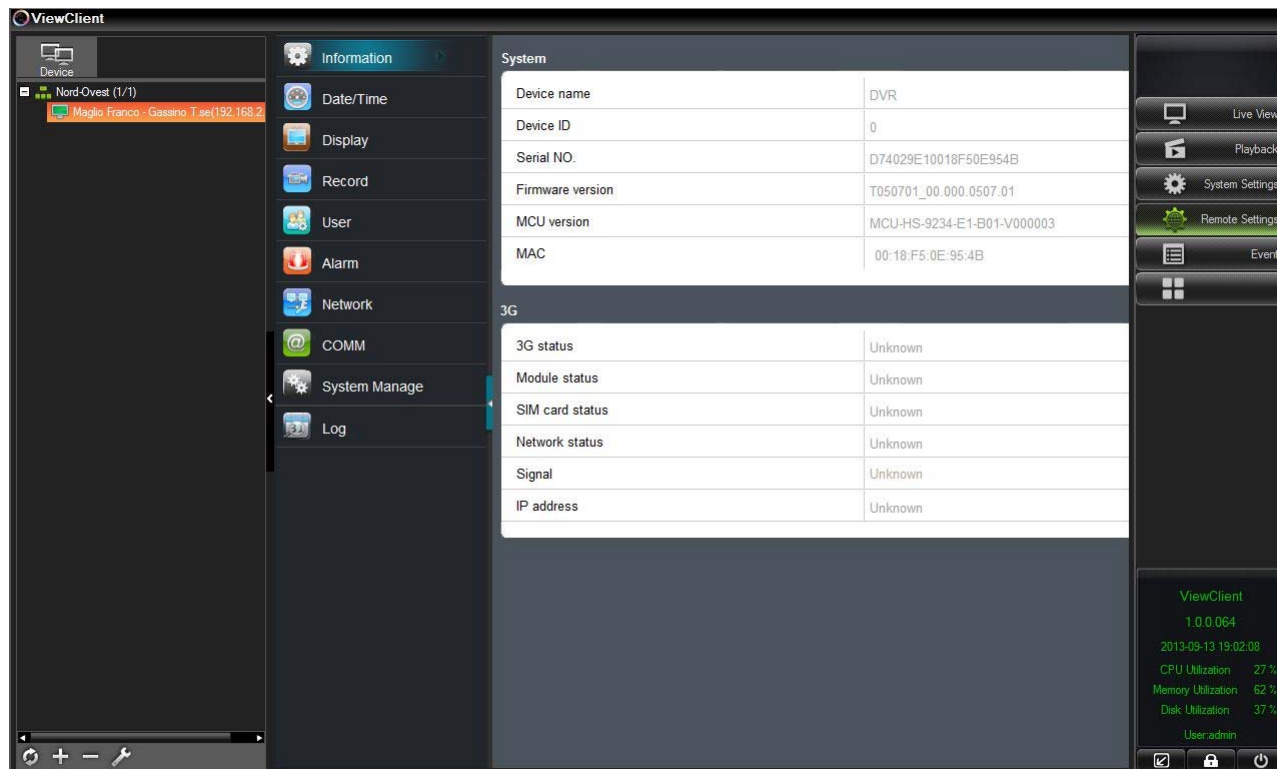
Export to EXE is very convenient because the built-in player already includes the playback controls and a great location to deliver the clip to police and to third parties who can play it without problems.

On the left there is also a box containing the list of alarm recordings and double-clicking on an event will start playback directly.



Tele-programming of the DVR

With Viewclient you can also make the entire programming of the DVR remotely. Click REMOTE SETTING in the right pane and double-click on the remote DVR you want to configure.



Take care that this part of ViewClient program uses the WEB port to communicate with the DVR while all other program functions using the door



DATA / MEDIA (default: 9000)

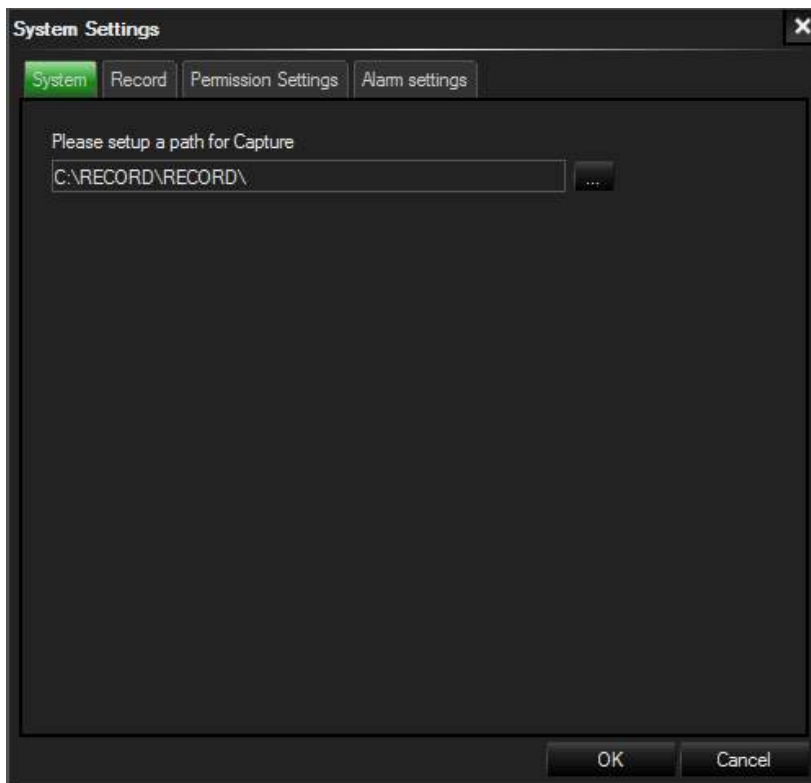
In this section you can configure, in comfortable tables, all programming options that are accessible through the local menu of the DVR, including formatting the hard disk. In this manual you are not addressed these programming pages as described in detail in the configuration guide,

of ViewClient Settings

Pressing the SYSTEM SETTINGS button you can program a few options related to the operation of ViewClient program.



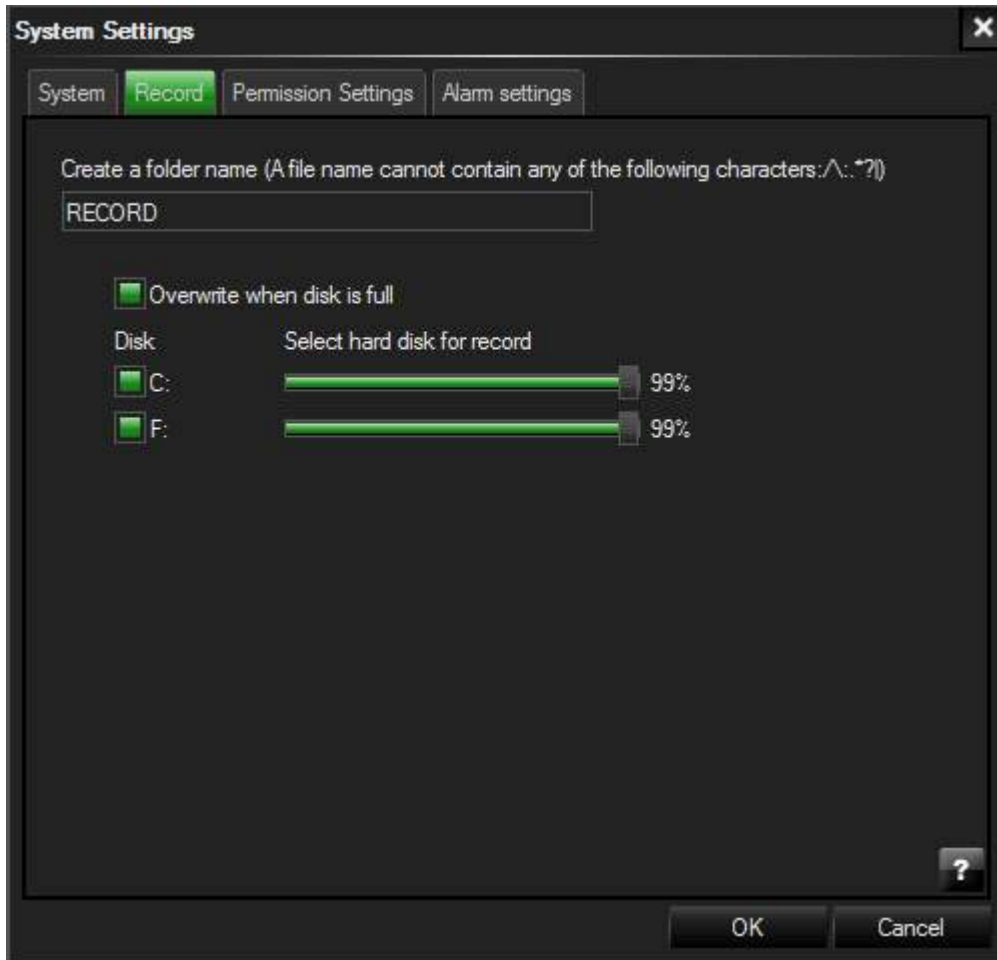
SYSTEM



In this folder settings before you can specify a folder on your hard drive where

store the captured frames with snapshot command

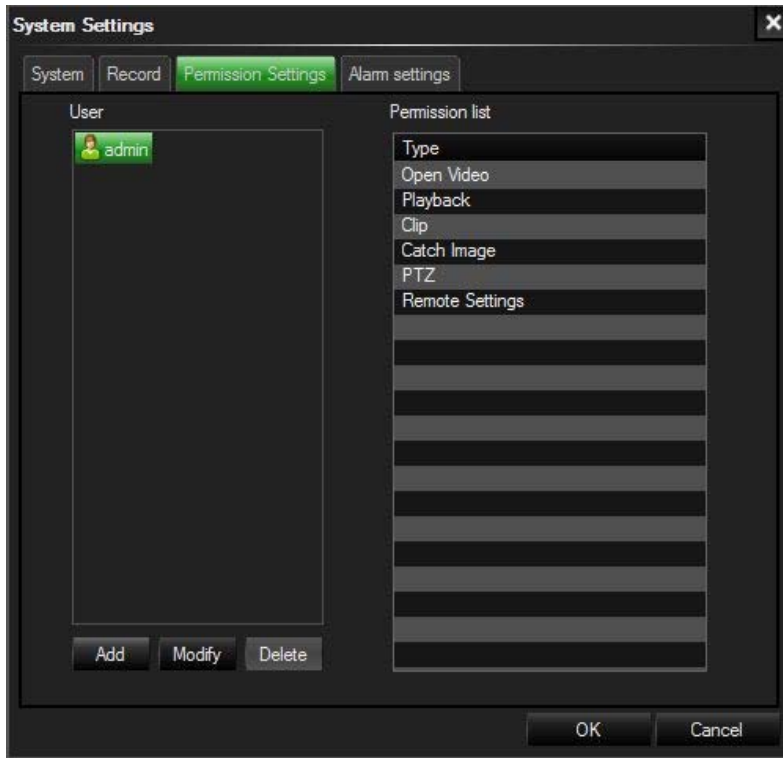
RECORD



This section sets the name of the folder in which to store the recorded files of the program. This folder (by default called RECORD) is automatically created in all the Hard Disk installed in the PC. In the bottom of the folder it is possible to disable / enable the hard disk storage and also limit the maximum space that can be occupied by dragging the cursor. For example, if you set the Hard Disk C to 50%, once reached half of the program capacity will increase to the next disc.

It 'also available OVERWRITE WHEN DISK IS FULL option to be enabled if you want the program, once exhausted the available space on the disc automatically overwrite older files.

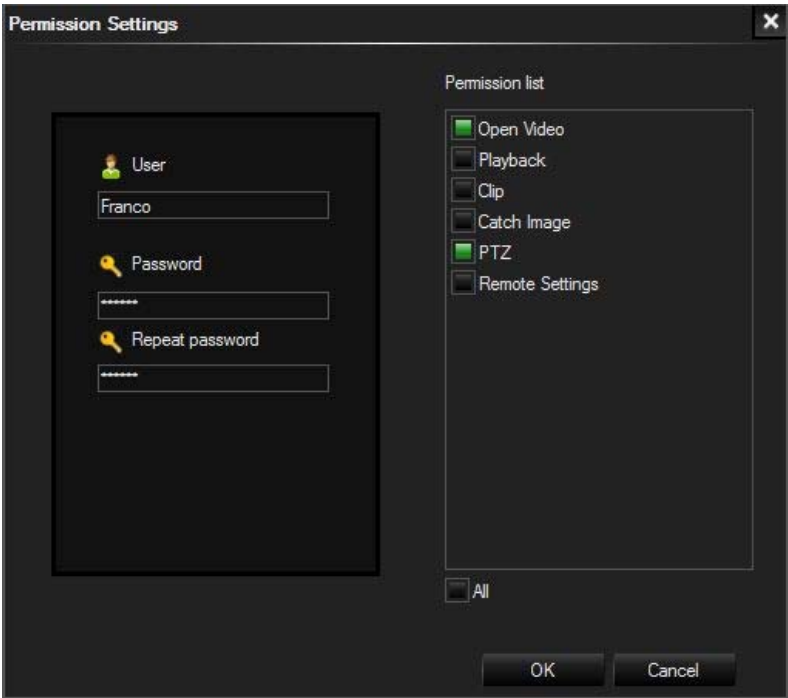
PERMISSION



ViewClient The program is password protected. In this folder you can enter user names and passwords that are allowed to use the program and their level of access. The default is the admin user (blank password) which obviously has access to all functions. E 'can click ADD, and add a new user. E 'can enter Name and Password and specify the access level. OPEN VIDEO - Access to viewing live PLAYBACK - Access to remote playback CLIP - Ability to save clips

CATCH IMAGE - Ability to save frames

REMOTE SETTINGS - Access to remote programming of the DVR



ALARM





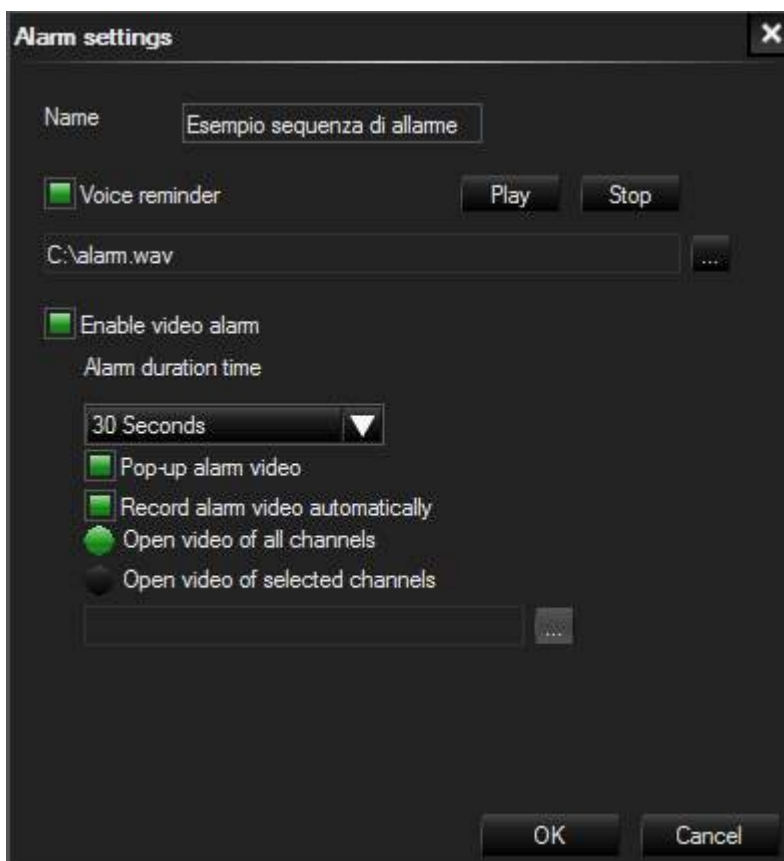
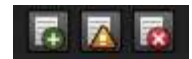
In this section you can set the alarm actions that viewclient program will run when you encounter an event in one of the connected DVR.

Viewclient fact receives real-time events and lack of motion video from connected DVR even if the video stream is not activated.

The table is composed of two columns. In the left column (ALARM PROCESSING PLAN) you can create predefined sequences containing different alarm actions. In the right column (ALARM TYPE) match these sequences to the various types of alarm.

ALARM PROCESSING PLAN

In the left column is already present a preconfigured sequence named DEFAULT. E 'can change this sequence, or create new ones using the Add / Edit / Delete.

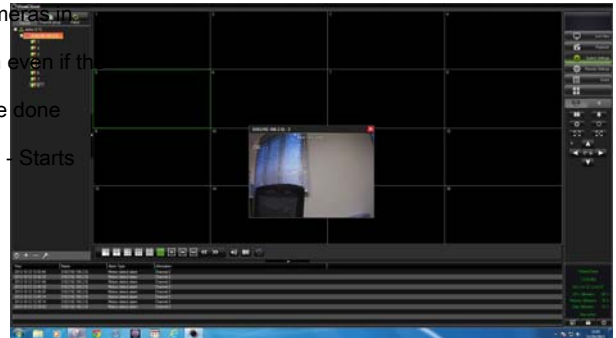


VOICE REMINDER - Allows you to play a sound on the PC that runs ViewClient in case of incoming alarm from DVR, using the sound card and speakers connected to your PC. If you enable this action is necessary to select the hard disk to a WAV audio file to play.



ENABLE VIDEO ALARM - Allows to execute Actions automatic viewing / recording on alarm that are configured on these lines. ALARM DURATION - Allows you to define the duration of the recording in case of alarm from 30 seconds to 5 minutes.

POP-UP VIDEO - Allows you to automatically show the video of the cameras in DVR alarm in a pop-up window that will be superimposed on the screen even if the ViewClient program was minimized. Closing the pop-up window must be done manually by the operator. VIDEO RECORD ALARM AUTOMATICALLY - Starts recording on alarm alarm channels



OPEN VIDEO - Allows you to automatically open the live video streaming of all DVR cameras in alarm, or just one specific channel of your choice.

ALARM TYPE

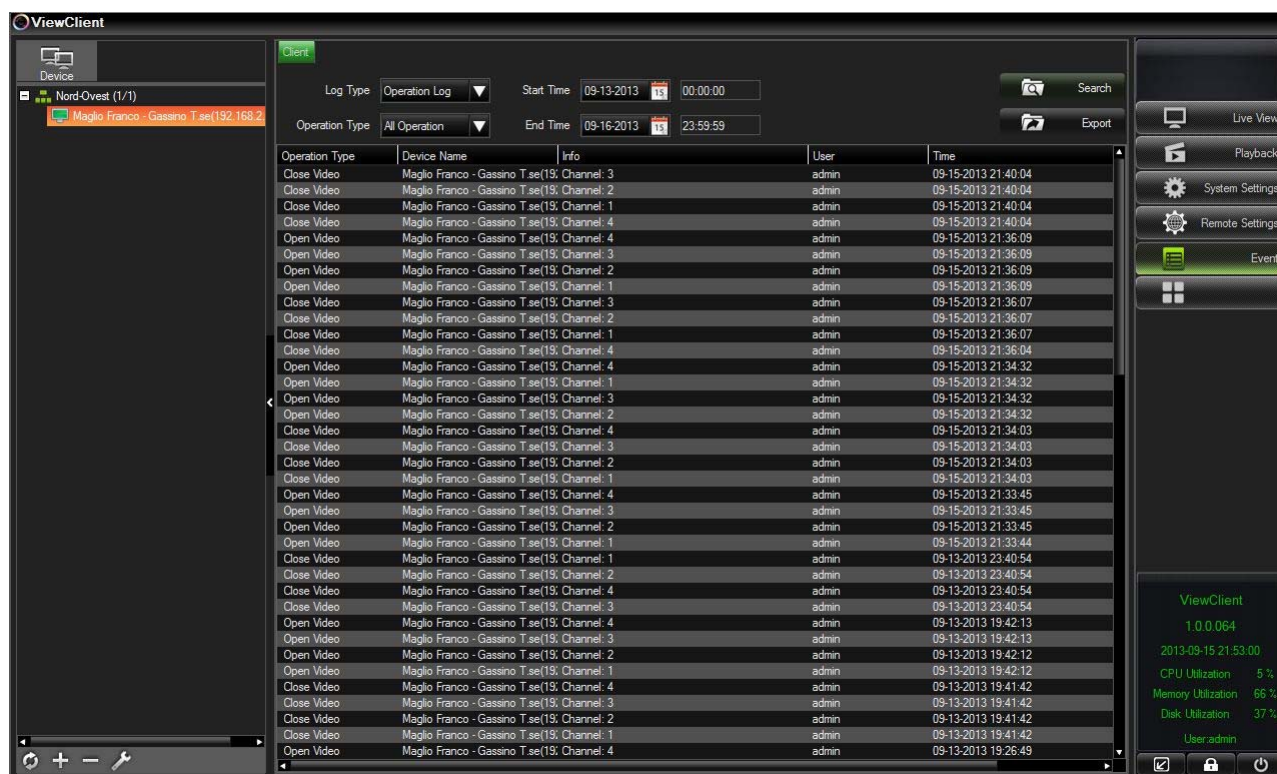
In the right column you can be associated to a sequence of alarm events (Alarm Processing Plan). The DVR DH series allow the management of the alarm causes MOTION DETECT (motion detection for alarm) and VIDEO LOSS (Video Loss).

Log event

Pressing the EVENT button you can see the memories of the events ViewClient program that includes both alarms received from remote DVR, both operations carried out locally on the program.



There are two types of LOG selected in the top left box: OPERATION LOG and ALARM LOG



Operation Type	Device Name	Info	User	Time
Close Video	Maglio Franco - Gassino T.se(19; Channel: 3		admin	09-15-2013 21:40:04
Close Video	Maglio Franco - Gassino T.se(19; Channel: 2		admin	09-15-2013 21:40:04
Close Video	Maglio Franco - Gassino T.se(19; Channel: 1		admin	09-15-2013 21:40:04
Close Video	Maglio Franco - Gassino T.se(19; Channel: 4		admin	09-15-2013 21:40:04
Open Video	Maglio Franco - Gassino T.se(19; Channel: 4		admin	09-15-2013 21:36:09
Open Video	Maglio Franco - Gassino T.se(19; Channel: 3		admin	09-15-2013 21:36:09
Open Video	Maglio Franco - Gassino T.se(19; Channel: 2		admin	09-15-2013 21:36:09
Open Video	Maglio Franco - Gassino T.se(19; Channel: 1		admin	09-15-2013 21:36:09
Close Video	Maglio Franco - Gassino T.se(19; Channel: 3		admin	09-15-2013 21:36:07
Close Video	Maglio Franco - Gassino T.se(19; Channel: 2		admin	09-15-2013 21:36:07
Close Video	Maglio Franco - Gassino T.se(19; Channel: 1		admin	09-15-2013 21:36:07
Close Video	Maglio Franco - Gassino T.se(19; Channel: 4		admin	09-15-2013 21:36:04
Open Video	Maglio Franco - Gassino T.se(19; Channel: 4		admin	09-15-2013 21:34:32
Open Video	Maglio Franco - Gassino T.se(19; Channel: 1		admin	09-15-2013 21:34:32
Open Video	Maglio Franco - Gassino T.se(19; Channel: 3		admin	09-15-2013 21:34:32
Open Video	Maglio Franco - Gassino T.se(19; Channel: 2		admin	09-15-2013 21:34:32
Close Video	Maglio Franco - Gassino T.se(19; Channel: 4		admin	09-15-2013 21:34:03
Close Video	Maglio Franco - Gassino T.se(19; Channel: 3		admin	09-15-2013 21:34:03
Close Video	Maglio Franco - Gassino T.se(19; Channel: 2		admin	09-15-2013 21:34:03
Close Video	Maglio Franco - Gassino T.se(19; Channel: 1		admin	09-15-2013 21:34:03
Open Video	Maglio Franco - Gassino T.se(19; Channel: 4		admin	09-15-2013 21:33:45
Open Video	Maglio Franco - Gassino T.se(19; Channel: 3		admin	09-15-2013 21:33:45
Open Video	Maglio Franco - Gassino T.se(19; Channel: 2		admin	09-15-2013 21:33:45
Open Video	Maglio Franco - Gassino T.se(19; Channel: 1		admin	09-15-2013 21:33:44
Close Video	Maglio Franco - Gassino T.se(19; Channel: 1		admin	09-13-2013 23:40:54
Close Video	Maglio Franco - Gassino T.se(19; Channel: 2		admin	09-13-2013 23:40:54
Close Video	Maglio Franco - Gassino T.se(19; Channel: 4		admin	09-13-2013 23:40:54
Close Video	Maglio Franco - Gassino T.se(19; Channel: 3		admin	09-13-2013 23:40:54
Open Video	Maglio Franco - Gassino T.se(19; Channel: 4		admin	09-13-2013 19:42:13
Open Video	Maglio Franco - Gassino T.se(19; Channel: 3		admin	09-13-2013 19:42:13
Open Video	Maglio Franco - Gassino T.se(19; Channel: 2		admin	09-13-2013 19:42:12
Open Video	Maglio Franco - Gassino T.se(19; Channel: 1		admin	09-13-2013 19:42:12
Close Video	Maglio Franco - Gassino T.se(19; Channel: 4		admin	09-13-2013 19:41:42
Close Video	Maglio Franco - Gassino T.se(19; Channel: 3		admin	09-13-2013 19:41:42
Close Video	Maglio Franco - Gassino T.se(19; Channel: 2		admin	09-13-2013 19:41:42
Close Video	Maglio Franco - Gassino T.se(19; Channel: 1		admin	09-13-2013 19:41:42
Open Video	Maglio Franco - Gassino T.se(19; Channel: 4		admin	09-13-2013 19:26:49

The OPERATION LOG includes the following events related to Viewclient program:



- CLIP - Save a video clip
- VIDEO OPEN - Start viewing live
- CLOSE VIDEO - End viewing live
- LOGIN - User Access
- EXIT - User logout
- PLAYBACK - Remote Play
- PTZ - camera remote control speed dome

The ALARM LOG includes the following alarm events generated from remote DVR:

- ALARM MOTION
- VIDEO LOSS

You can perform searches by selecting the time period and the type of event and press the SEARCH button.

And 'possible to export the LOG in an EXCEL file by pressing the EXPORT button.