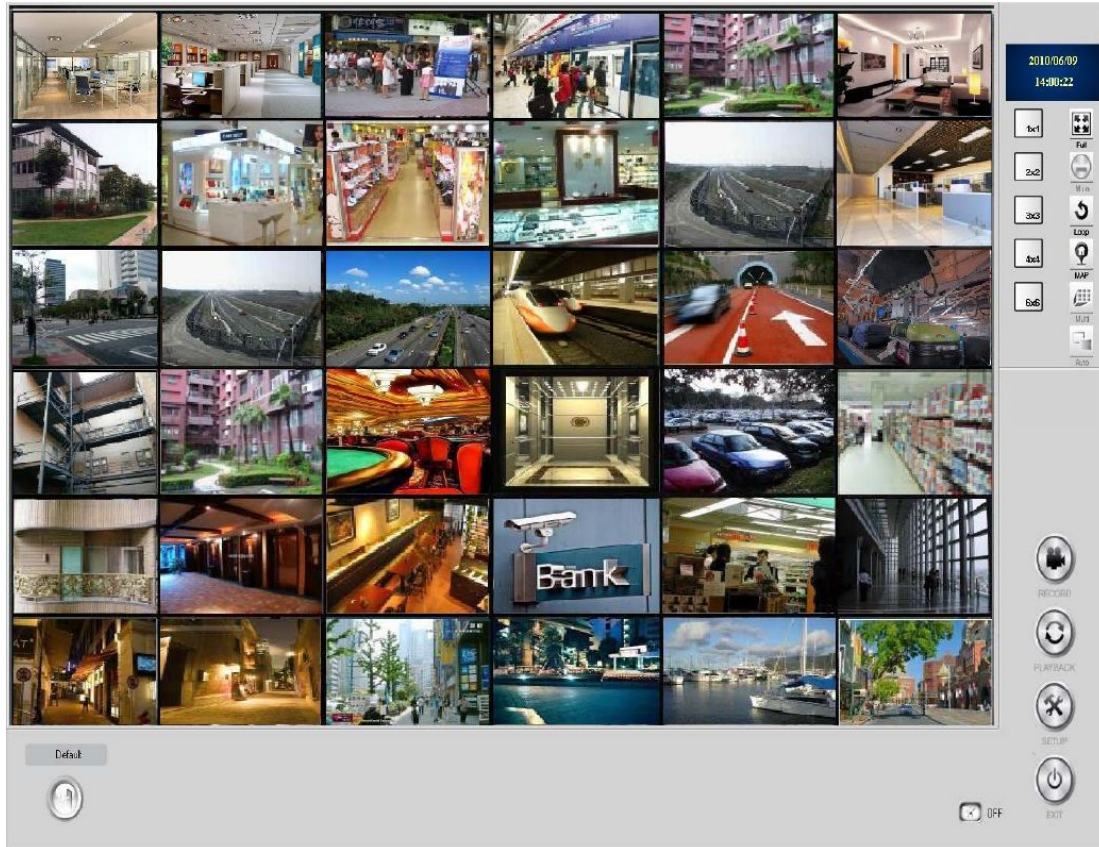


## IP Recording Software



## Introduction

The Sentinel software is a tool NVR (network video recorder) supplied together with the RN Series cameras to allow viewing and recording of incoming images from up to 36 IP cameras on the network.

It is a very powerful and flexible tool that can handle streaming video input and lavoro with its powerful functions. The software is able to communicate only with RN series cameras and can not handle IP cameras from other manufacturers.

## Minimum System Requirements

The Sentinel software must of course be installed on a computer connected via network



local or via internet with cameras to handle. These are the minimum requirements to the PC on which to install the software:

- CPU: Intel Pentium 4 2.0 GHz or higher RAM: 1GB minimum
- 
- OS: Windows Server2003 / 2000 / XP / Vista / 7 Video: 128MB
- or higher
- File system: NTFS (the software can also operate in FAT32 but with reduced performance) Video resolution: Min. 1024x768
- 

## Installing Software

---

Insert the CD into the player and follow these steps:

- Explore the CD and find the installer (xxxxxxx.EXE), double-click to start the installation
- Select the installation language (Italian available)  
**CAUTION :** This choice defines the language in which you present the installed software. For convenience in this manual we will refer to **Italian language**.
- Accept the license
- Click NEXT to various confirmation window will appear on the desktop After

the installation 2 icons:

**NETWORK RECORDING SOFTWARE** - To launch the surveillance program

**CONFIGURE TOOL** - To launch the configuration program

## Log-in

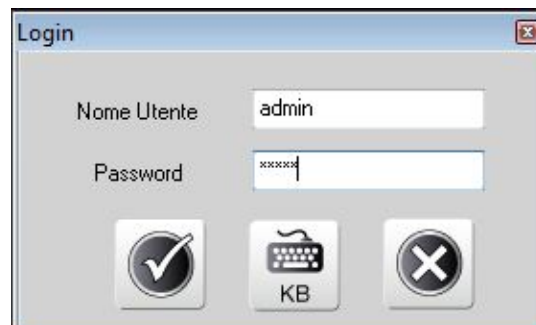
---

Access to HD NVR program is password protected. The default values are:

**USERNAME: admin**

**PASSWORD: admin**

Password is case sensitive



Of course you can customize the password in the settings.

For Vista or Windows 7-based systems may be necessary to launch the program by clicking the right mouse button and choose RUN AS ADMINISTRATOR.

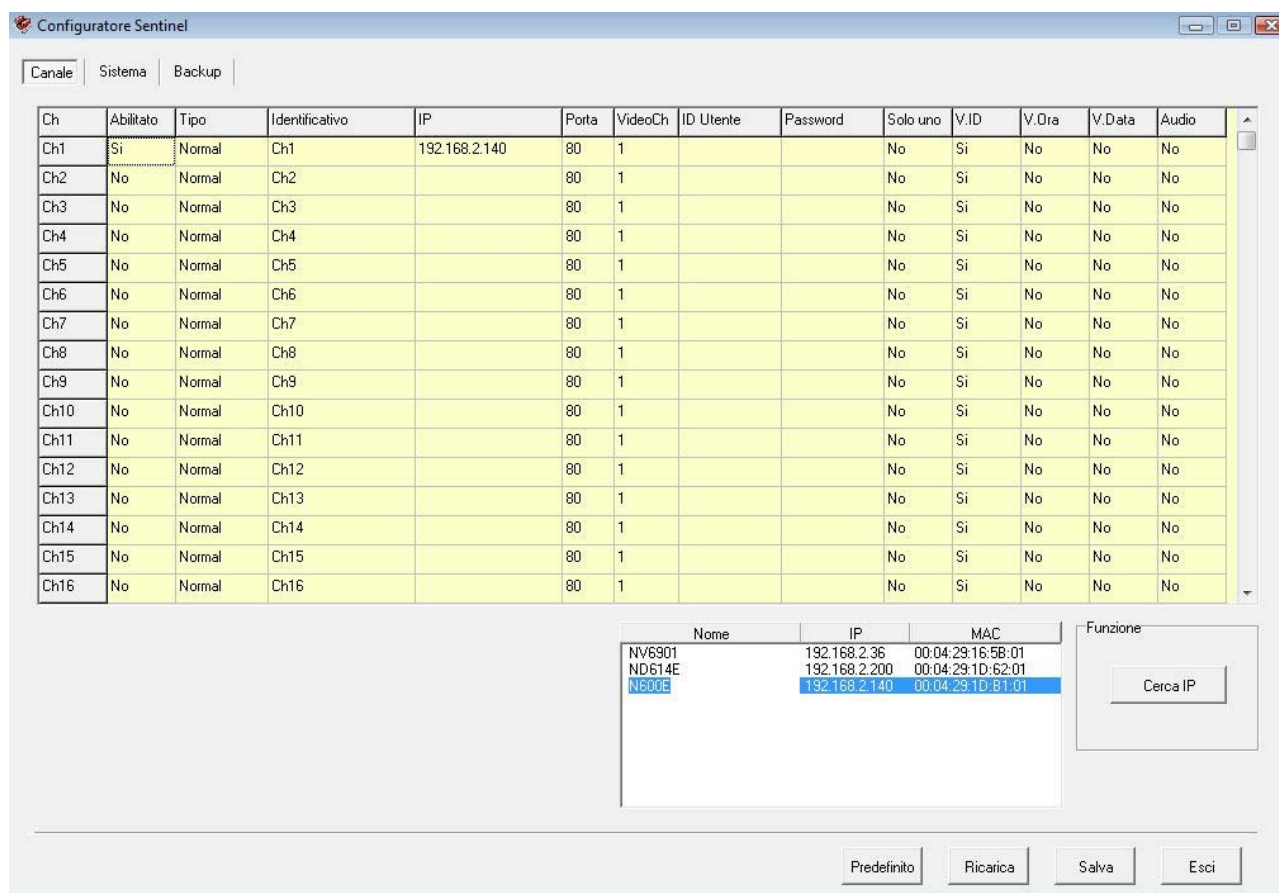


## Configuration Tool



The configuration program is automatically installed along with the main program and allows you to configure and manage the connection with peripheral IP cameras.

To start the program double click on CONFIGURE TOOL Make the log-in as described above.



Ch	Abilitato	Tipo	Identificativo	IP	Porta	VideoCh	ID Utente	Password	Solo uno	V.ID	V.Ora	V.Data	Audio
Ch1	Si	Normal	Ch1	192.168.2.140	80	1			No	Si	No	No	No
Ch2	No	Normal	Ch2		80	1			No	Si	No	No	No
Ch3	No	Normal	Ch3		80	1			No	Si	No	No	No
Ch4	No	Normal	Ch4		80	1			No	Si	No	No	No
Ch5	No	Normal	Ch5		80	1			No	Si	No	No	No
Ch6	No	Normal	Ch6		80	1			No	Si	No	No	No
Ch7	No	Normal	Ch7		80	1			No	Si	No	No	No
Ch8	No	Normal	Ch8		80	1			No	Si	No	No	No
Ch9	No	Normal	Ch9		80	1			No	Si	No	No	No
Ch10	No	Normal	Ch10		80	1			No	Si	No	No	No
Ch11	No	Normal	Ch11		80	1			No	Si	No	No	No
Ch12	No	Normal	Ch12		80	1			No	Si	No	No	No
Ch13	No	Normal	Ch13		80	1			No	Si	No	No	No
Ch14	No	Normal	Ch14		80	1			No	Si	No	No	No
Ch15	No	Normal	Ch15		80	1			No	Si	No	No	No
Ch16	No	Normal	Ch16		80	1			No	Si	No	No	No

Nome	IP	MAC
NV6901	192.168.2.36	00:04:29:16:58:01
ND614E	192.168.2.200	00:04:29:1D:62:01
N600E	192.168.2.140	00:04:29:1D:B1:01

Cerca IP

Predefinito Ricarica Salva Esci

When the program opens a network search is automatically made of all compatible cameras that will appear in the lower right pane. To return to search you can press IP SEARCH.

Note that CONFIGURE TOOL integrates IP INSTALLER for RN series cameras. This means that you can just installed with factory address also detect camera, also not consistent with that of the network in which you are working.

The Sentinel software automatically detects all the RN series cameras and is not compatible with IP cameras from other manufacturers.

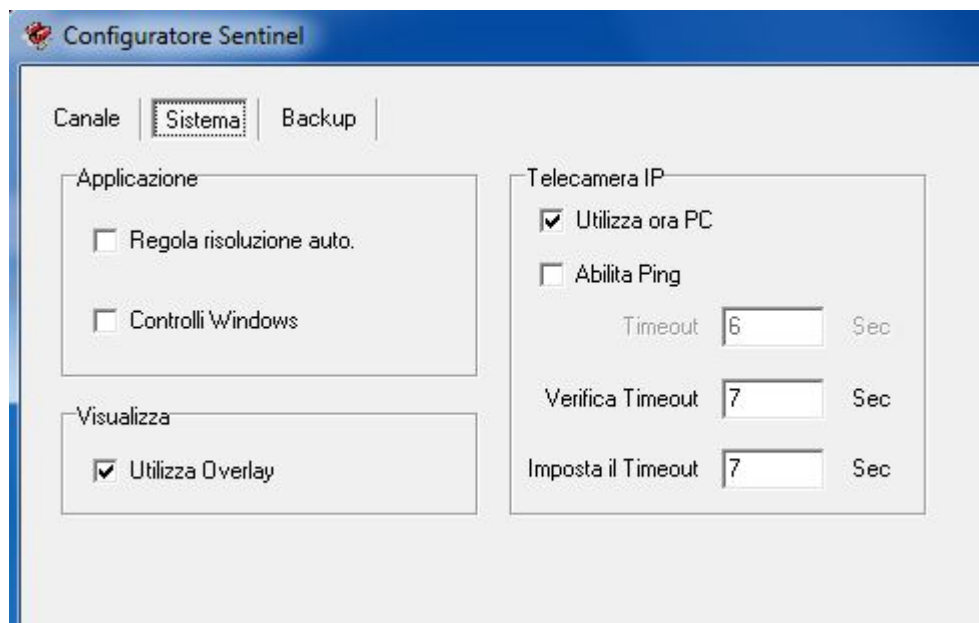
The top window lists the 36 channels that the software is able to manage.

To match a camera to a channel select it and drag it to the desired position. E 'can freely edit the parameters in the table, although they are also editable inside the Sentinel program. At this stage you can simply enter only USER ID and PASSWORD. The functionality of the individual table entries is thoroughly described in the next section.

Finally click SAVE to store configuration and EXIT to exit. In the DEFAULT window buttons are also available to reset the table to factory defaults and RELOAD to reload the last saved version of the table.

TIP: If you double-click on the camera in the lookup table in the lower right is displayed in the browser.

Top left in the program there are tabs that allow access to other configuration folders in addition to the CHANNEL we have just shown.



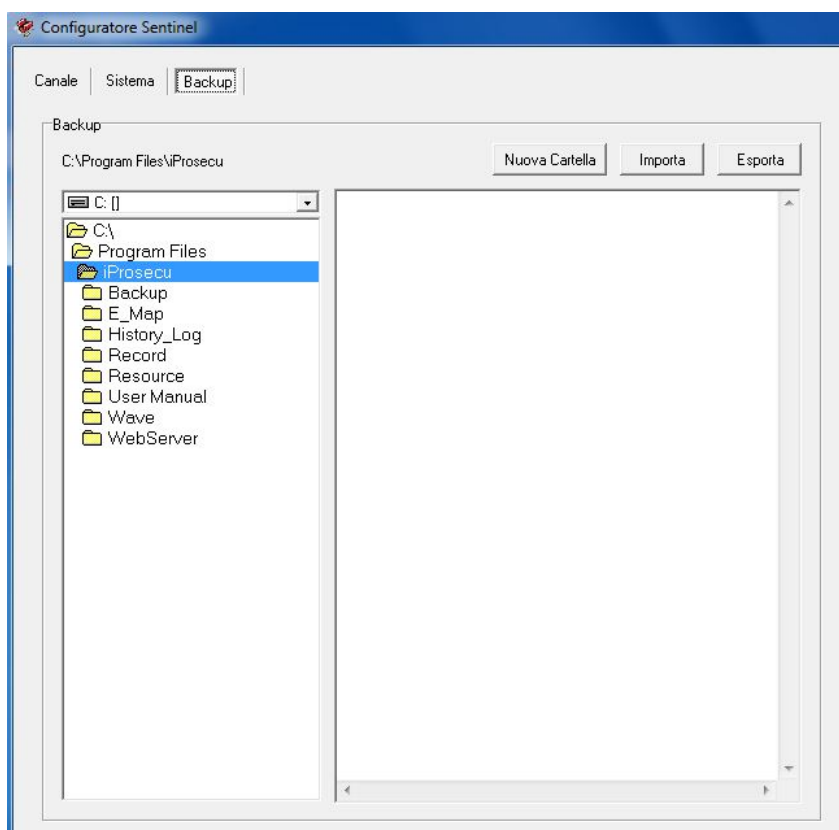
In SYSTEM folder, the following options are:

- RULE AUTO RESOLUTION - When selected the camera's aspect ratio of the image will always be preserved, even if it does not match the panel prepared by the program based on the split screen that you have chosen. Will enter the side black bars to fill the window.

This rule option is left to OFF to allow the program to automatically adjust the camera image to the box that the program provides.

- CONTROL WINDOWS - Function enabled only for monitors with more than 1024x768 resolution. By selecting this option, the Sentinel program appears full-screen as a factory, but in a window with a 1024x768 resolution that you can drag the screen.

- NOW USING PC - Enabling this option will store movies based on time of the PC on which the software is installed. Disabling the function will reference the date and time of the camera
- PING ENABLE - Sets the Periodic Table of the cameras. From left disabled if the cameras operating behind firewalls.
- USING OVERLAY - The overlay allows you to reduce the load on the CPU and increases system performance. Disable only if the graphics card in your PC does not support OVERLAY.



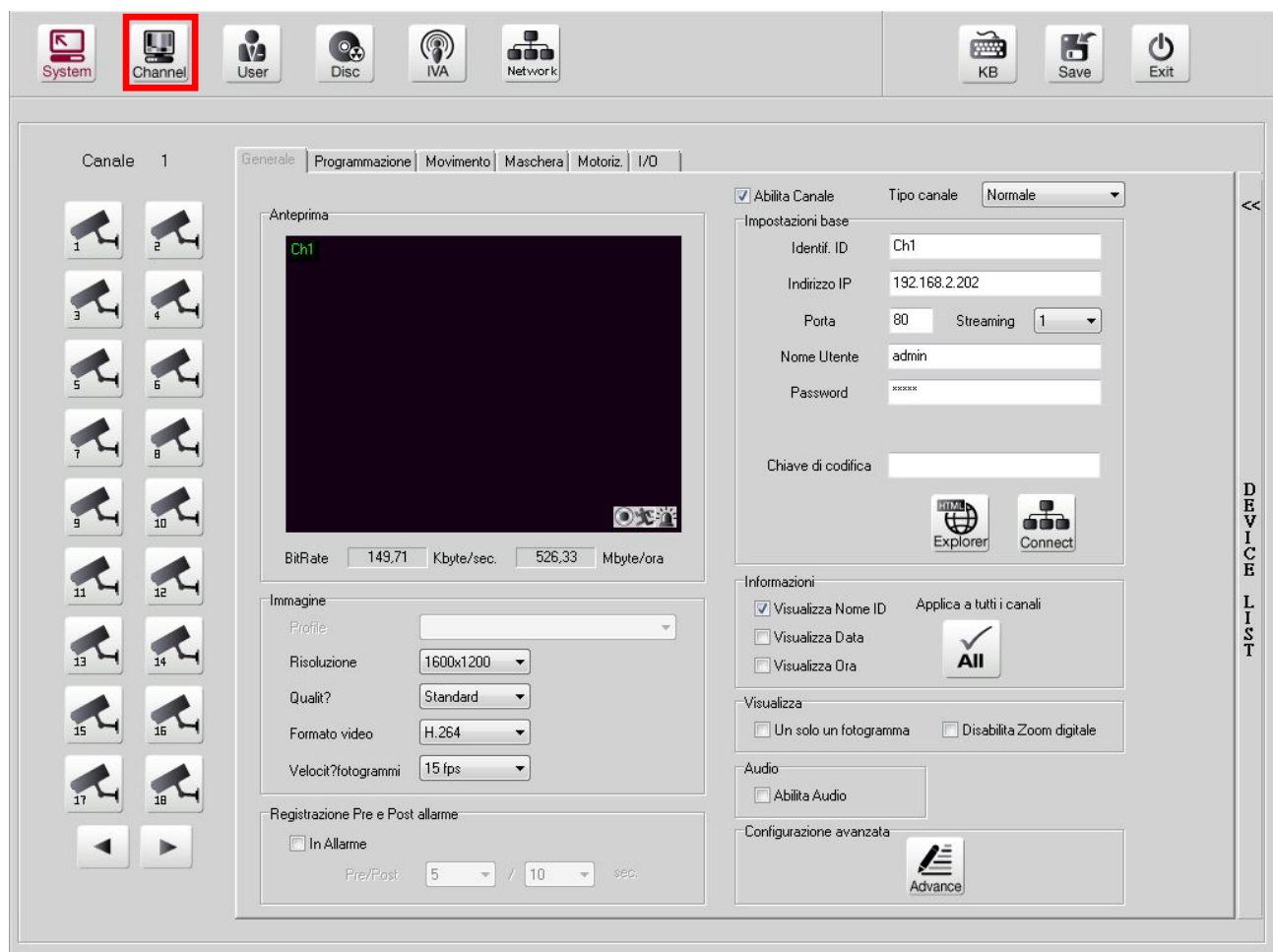
In BACKUP folder you can EXPORT the Sentinel program in a configuration folder. Pressing EXPORT all custom configurations, including cameras, graphics etc. You will be saved in various files into a folder where you can choose your hard drive location. Pressing IMPORT You can import a previously exported configuration.



## camera Options



Launch the Sentinel program by double clicking the icon. Click the SETUP button and once had access to the programming menu choose the CHANNEL page to open the camera setup section.



On the left of the camera icons are shown from 1 to 18. Pressing the arrows at the bottom it is possible to move the cameras 19 ... 36.

Sentinel can manage up to 36 cameras simultaneously RN series. Select a camera, for example channel 1, and configure the parameters of the folder GENERAL

- CHANNEL ENABLE - To temporarily disable a camera retaining your settings.
- CHANNEL TYPE - Normally this option is left to NORMAL, other options are also available. RTSP and JPEGSTREAM are not supported, while some importance can have the ASSOCIATED option. If a channel is associated with another it will show the same

image of the associated channel without consuming PC resources. A typical application is to associate a camera to 2 channels and in one of them display zooming of a particular.



In this example, the Sentinel software is actually connected to a single camera (channel 1) but are the 2,3 and 4 channel also been enabled as associated channels to zoom in on areas of interest.

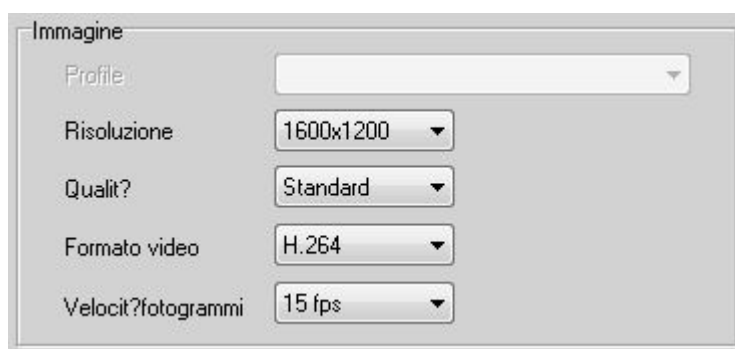
- **BASIC SETTINGS** - In this section we fit the connection data are consistent with the camera to which you want to connect. If you have already configured channels with the configuration TOOL (see previous chapter) will end cameras already connected to the respective channels. E 'can, however, enable channels and enter the connection data manually in this window. In the case of this window associated channel is reduced only to the choice of the channel to be associated with





The identifier is customizable at will and is the name of the camera. Address and port used must match the camera. Factory cameras using port 80, but you can change it at will. In STREAMING box you choose which video streaming use if the camera has multi-streaming feature. The RN series cameras have 3 customizable streaming each with its own compression, resolution and frame rate in order to adapt to changing network requirements. The access credentials are needed if the camera requires them to connect. Click CONNECT to connect the camera (not necessary if you have used the configuration tool) or connect to the camera with IE browser.

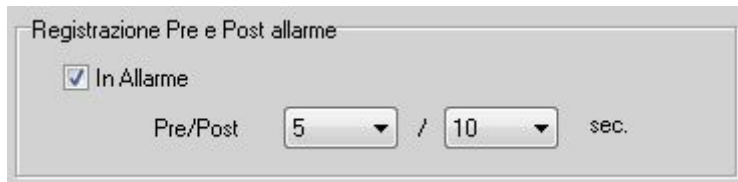
- IMAGE - In this section you set the streaming video settings. In automatic mode will be shown the corresponding adjustments to the selected stream in the settings of the camera, but you can modify them.



Streaming video is identified with a resolution value, a quality of image or bit / rate, a compression format (if the camera it manages more than one), and a frame rate. The regulations require maximum bandwidth availability while lower values are to be used in case of low bandwidth, as in the case of connections via the Internet or mobile network.

- REGISTRATION PRE AND POST ALARM - If you decide to assign the camera a

registration on the basis of alarm events from here you can set up a registration period before and after the event.

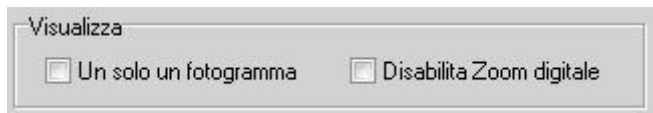


- INFORMATION - E 'can define the information to be shown superimposed in vision LIVE.



They are available Camera name, date and time. With the ALL button applies choosing the same on all channels.

- VIEW - In this section you can choose to display only an I-frame in the live view and disable the digital zoom function



Receive only an I-Frame by a camera means only receive the frame compression algorithm that is the source for other compressed frame. This way you receive one frame at a time with a very fragmented vision, but the maximum uncompressed video quality.

- AUDIO - It enables or disables the audio management if available in Camera
- ADVANCED CONFIGURATION - Allows you to define the location, font and color overlays. This configuration is the same for all the channels for which each change applied in this window is applied to all cameras



UL = Upper Left UR Upper

Right = DL = Bottom left DR =

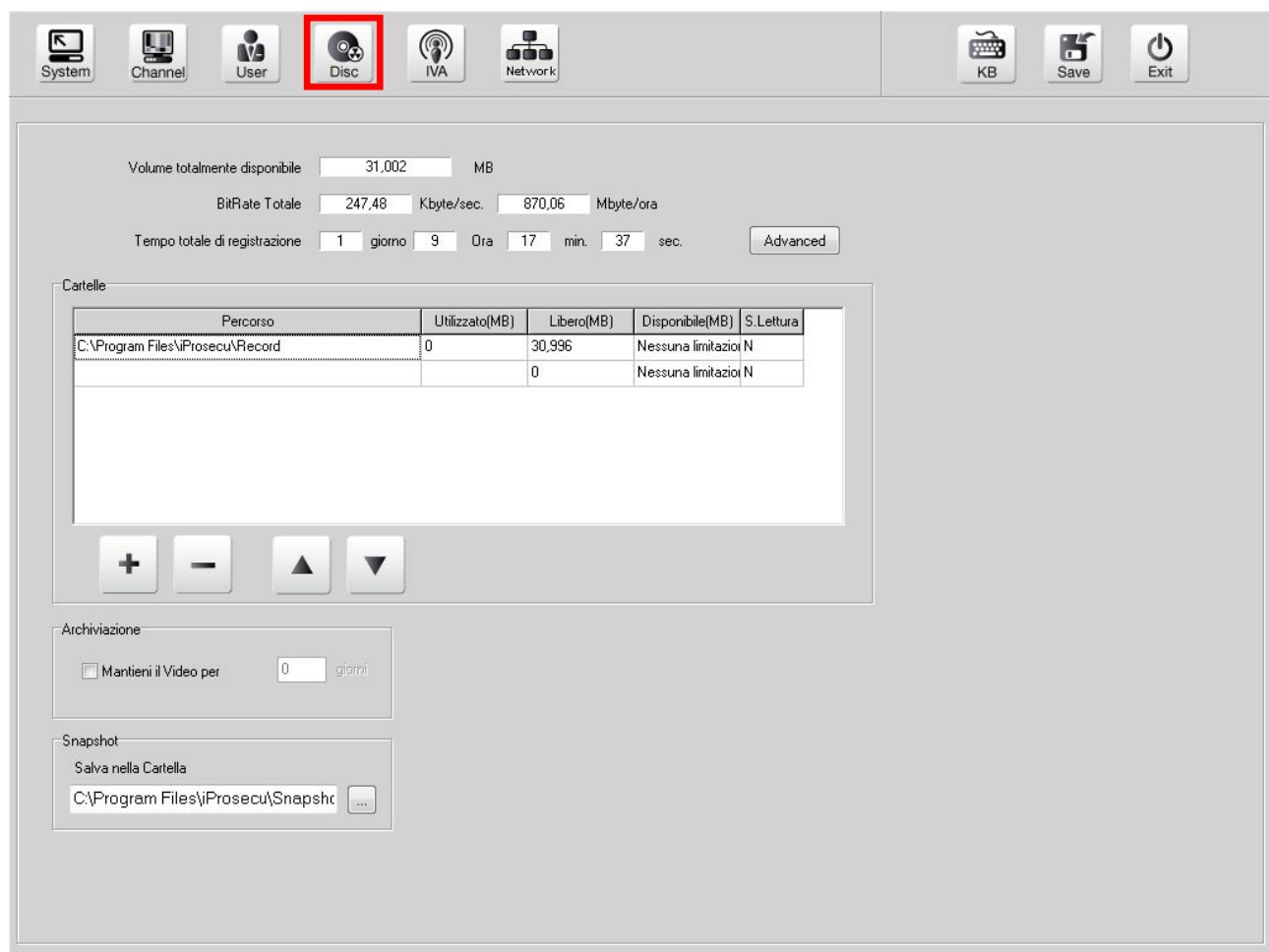
Bottom right

In the preview window shows the visual result.

## HDD settings for recording

The program allows you to record images from the cameras on 'computer hard drives. To do this you need to set the recording dedicated space.

Launch the Sentinel program by double clicking the icon. Click the SETUP button and once had access to the programming menu, select the DISC page to open the disk space configuration section.



By default storage folder is the RECORD folder inside the program installation folder and there is no any limitation of space.

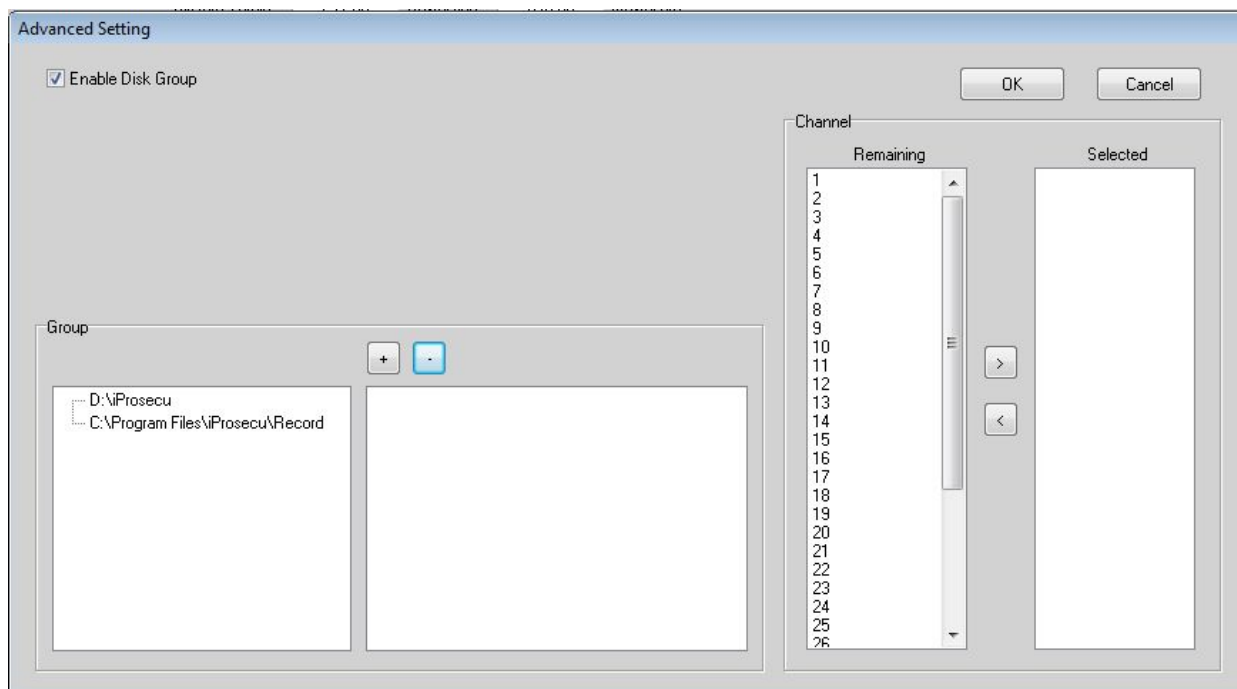
- + / - With the + and - buttons you can add a new archive folder, and delete an existing one.
- Up / Down - With the arrows you can change the order of storage folders. Consider that the program will begin to fill the first storage folder at the top and once you run out of space to pass subsequent ones

- TABLE HDD - After adding the folder to the list in the table is displayed automatically as space and space USED FREE.

Percorso	Utilizzato(MB)	Libero(MB)	Disponibile(MB)	S.Lettura
C:\Program Files\iProsecu\Record	0	30,997	Nessuna limitazione	N
	0		Nessuna limitazione	N

The AVAILABLE column you can if you want to limit the size of the folder to a default value and enable the READ ONLY to prevent changes.

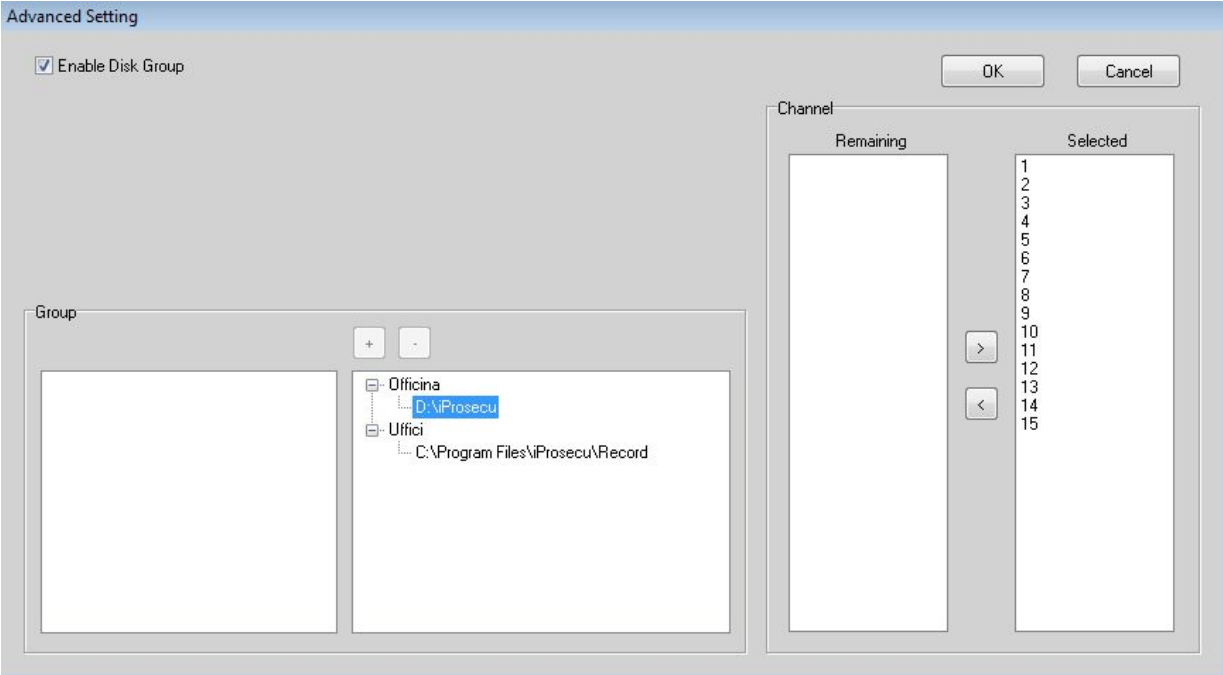
- KEEP THE VIDEO FOR - This option allows you to limit archiving to an X number of days for privacy protection requirements.
- SNAPSHOT - E 'can choose the folder where to save photos taken with the program. The photo shooting in live view using the right mouse button.
- ADVANCED - In this section you can decide which camera to record in different storage folders.



Click ENABLE DISK GROUP to enable the function. If the function is not enabled cameras will all be recorded together in the same storage folders. Click

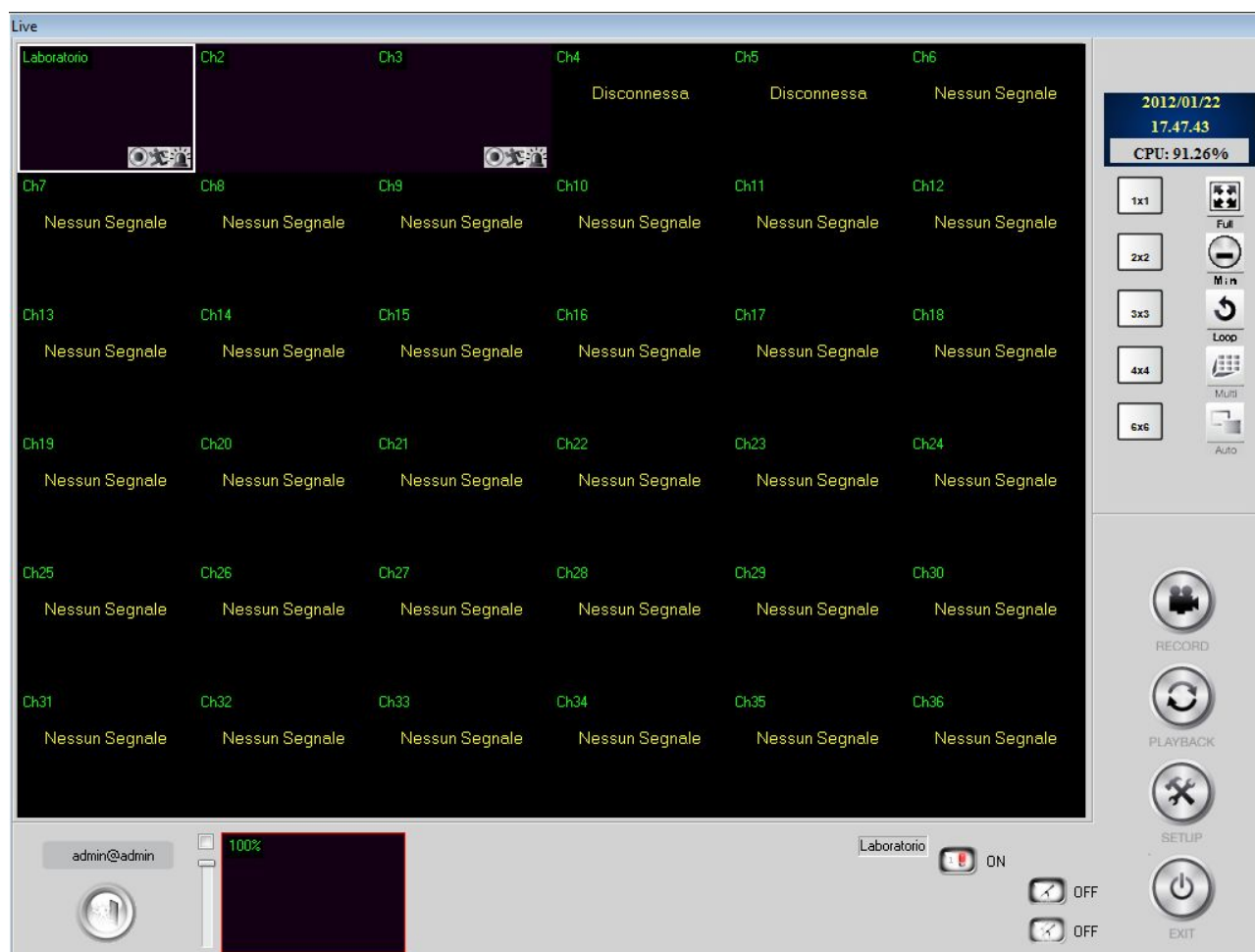
+ / - to create or delete a group to which you can assign a meaningful name, then drag in the group storage folders that are listed on the left. Select the group and the match you selected cameras in the two right columns. See example below





## LIVE Vision

The primary function of the Sentinel program is to allow to see all the cameras in real time. To do this, the program has several display options.



The right buttons allow to choose the screen that you prefer 1x1: A full-screen camera 2x2: Vision quad 4 cameras 3x3: 9 telecamere to 4x4 screen: 16 cameras in 6x6 screen: 36 screen cameras subdivision

And 'possible to precisely define which cameras display in the various subdivisions as we shall see later in the settings.

The buttons in the live view are the following:

- FULL - Take full screen Camera overview by hiding the control buttons. Press Esc to exit.
- MIN - Minimize the program, which remains in the running TASKBAR windows
- LOOP - Allows you to start showing cyclic scanning where active scan cameras rotate on the screen. For example, if display is active 4 cameras (2x2) by pressing the LOOP button to rotate the cameras 1..4 screen, then

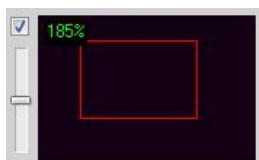
5..8 etcetera. The residence time of each screen is programmable in the settings. LOOP Press again to stop scanning.

- MULTI - Skills / disable multi monitor, if your graphics card handles multiple monitors
- AUTO - automatically has in the case of dual monitor
- RECORD - Enables the recording MANUAL
- PLAYBACK - Accesses the playback of recorded
- SETUP - Accesses settings
- EXIT - Closes the program

Under camera images there are other commands and directions:



- LOG IN / LOG OUT - To enter and exit with your password



- BOX ZOOM - Allows you to zoom in digitally

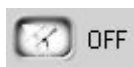
the image and obtain a more detailed frame that will be shown in the display window instead of the image compete. To frame the details you want and you can drag the frame with the mouse in the desired position. E 'can increase the zoom to 100% (normal) to 1000% (10x).



- I / O - Button for remote manual activation of the relay outputs (if present into the camera)

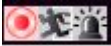


- CHAT - Enable bidirezionale sound (if supported by the camera)



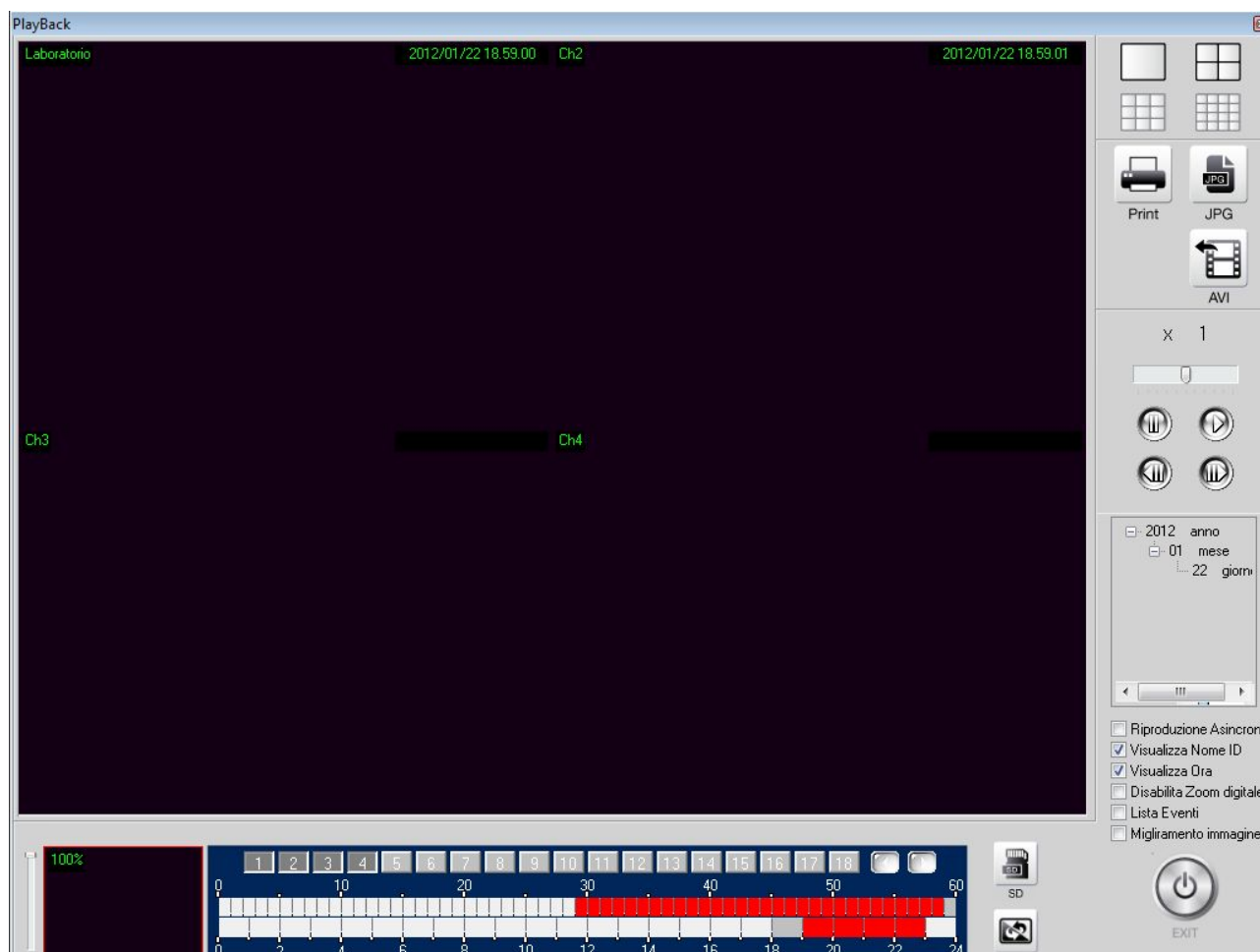
- BRADCAST - broadcast audio enabled (if supported by the camera)



- PTZ - buttons for controlling speed dome cameras. They activate automatically in case of motorized cameras or video servers capable of controlling speed dome cameras.
- CONTEXT MENU - Clicking the right mouse button on each camera leads to the following commands: REGISTRATION (active type preference recording: scheduled, continuous, event-triggered) SNAPSHOT (take a JPEG photos), NOTES (active detection alarms), CHAT (active audio), oUTPUT (active board room relay output).
-  ICONS OF STATE - Each active camera shows in the lower right 3 icons that may be red (ON) or off (OFF) and show status of the camera. They point from left to right: RECORD ON / OFF MOTION ON / OFF, ALARM INPUT ON / OFF.

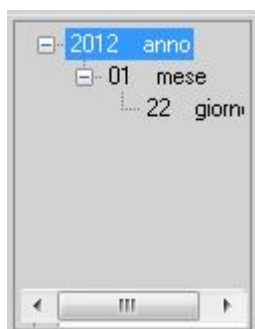
## Playing your recordings

To play back recorded video, press the PLAYBACK button and open the playback window. The program has a search timeline that allows in a few seconds to find the images that interest you.



To play the camera, day and time that you want to proceed as follows:

- SELECT THE DAY - Acting in the calendar window to choose the day of interest



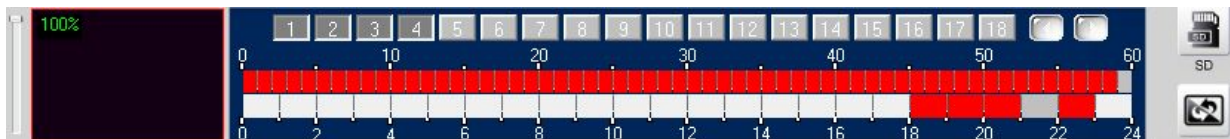


- SELECT THE CAMERA - Operate in numerical bar under the monitoring panel and enable the cameras to be displayed



You can enable how many cameras you want: the viewing area will automatically be divided accordingly.

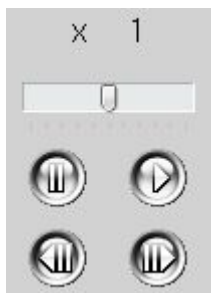
- SELECT HOUR AND MINUTES - Act in the time line to select hour and minutes



It is composed of 2 lines numbered. The lower one is numbered from 0 to 24 and represents the hours, the top one from 0 to 60 and represents the minutes. The timeline assumes different colors depending on the data in the database. NO COLOR - No data  
RED video in that period - Normal Recording

YELLOW - Recording activated by motion detection  
BLUE - Recording activated by alarm input  
GREEN - activated recording from other alarm conditions  
GRAY - The time period you've selected

- CHECK THE PLAY



The control buttons allow, with the usual notation of VCRs the following functions: PLAY, PAUSE.

The two buttons with forward and back arrows are used during the break to go to the next or the previous enabling a detailed analysis of what is being played. The top slider adjusts the playback speed: normal (x1), fast (x2 ... x32) or slow motion (-2 ... -32).

There are also some selectable options available:

- REPRODUCTION ASYNCHRONOUS - This option allows you to simultaneously play different cameras at different times.

- VIEW NAME ID / TIME - Controls the overlay
- DISABILITY DIGITAL ZOOM - Always show the video in its original format
- EVENTS LIST - Shows the list of alarm events
- IMAGE ENHANCEMENT - Opens the image adjustment window (brightness, contrast etc.) included vision in B / N and in negative.

To the left of the timeline is the digital zoom box that can be used as the live view. A timeline of the right are two buttons:



- - It allows you to watch movies on the SD card of the camera, though this course is so equipped



- - It allows you to update the data of the time line

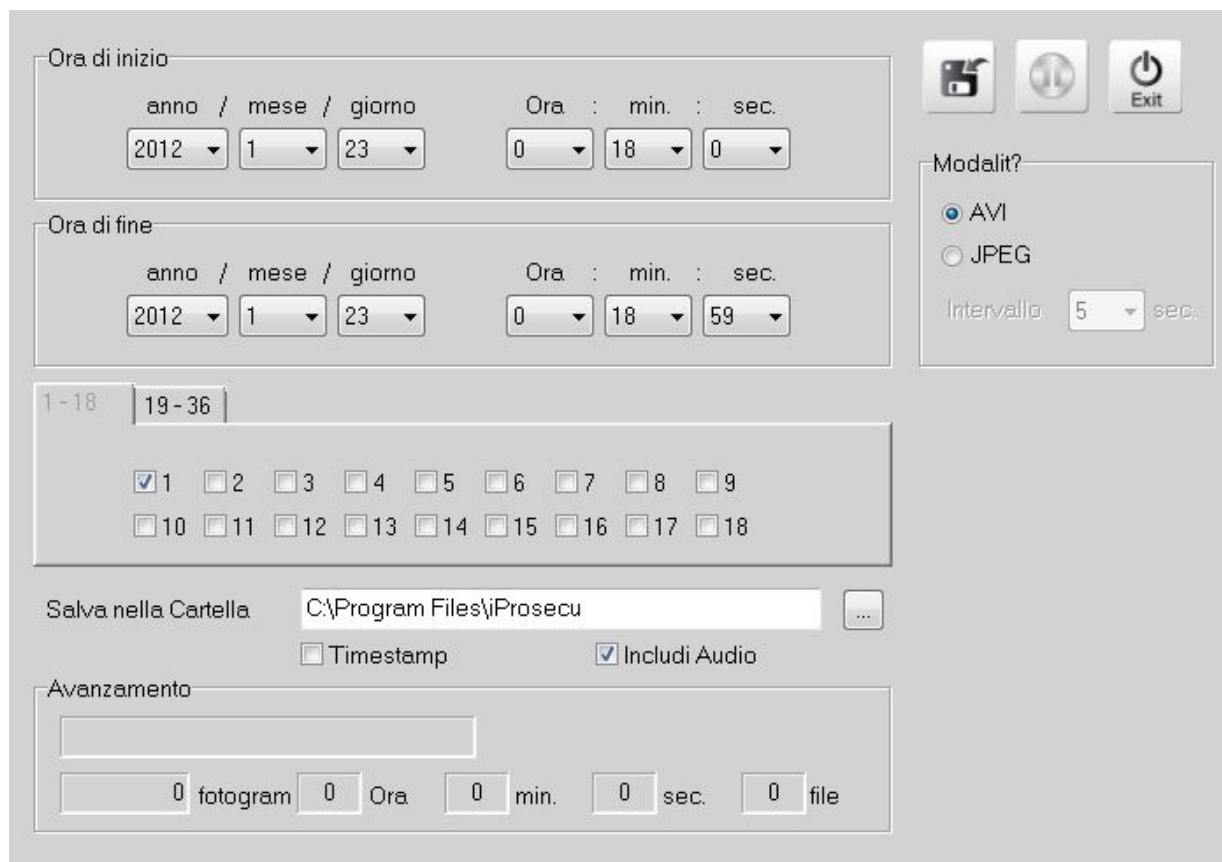
With the upper right button you can EXPORT files:



- - It allows you to save the frame to display photos as JPG. Before pressing the shutter should pause playback at the desired point.



- - It allows you to export your video as an AVI video file. Enters the export window



Ora di inizio

anno / mese / giorno      Ora : min. : sec.

2012   1   23      0   18   0

Ora di fine

anno / mese / giorno      Ora : min. : sec.

2012   1   23      0   18   59

Modalit?

☒ AVI  
☐ JPEG

Intervallo   5   sec.

1-18   19-36

☒ 1   ☐ 2   ☐ 3   ☐ 4   ☐ 5   ☐ 6   ☐ 7   ☐ 8   ☐ 9  
☐ 10   ☐ 11   ☐ 12   ☐ 13   ☐ 14   ☐ 15   ☐ 16   ☐ 17   ☐ 18

Salva nella Cartella   C:\Program Files\iProseco

☐ Timestamp   ☒ Includi Audio

Avanzamento

0 fotogram   0 Ora   0 min.   0 sec.   0 file

In this window you must specify the date / time clips and time / date of the end clip, then the cameras to export. E 'can choose the folder in which to create the file and decide whether you want to include the overlay of the date / time and the audio. The section MODE 'lets you choose whether to export an AVI video file or JPG photos every XXX seconds.

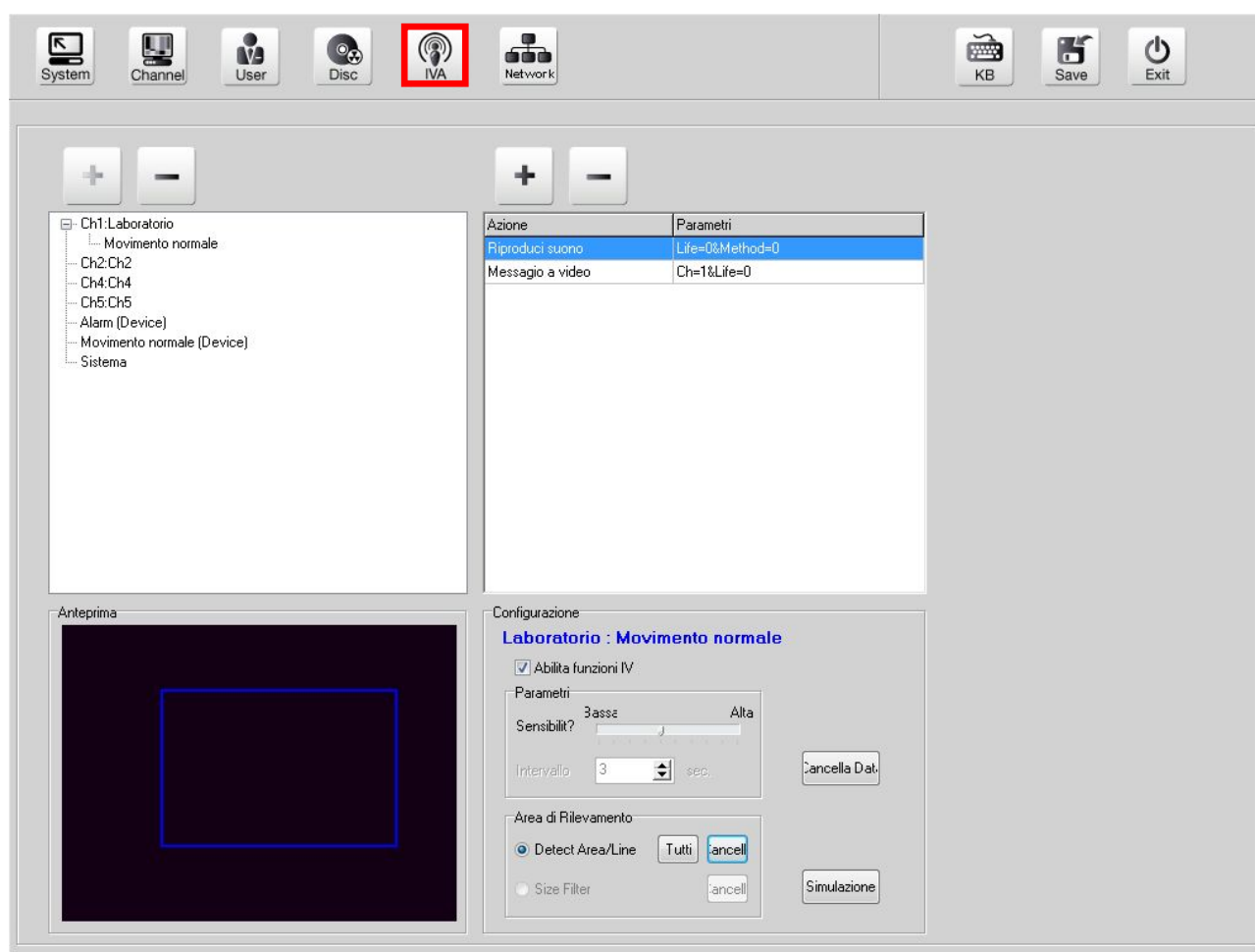


Press the button to start exporting. Sentinel will generate many AVI files how many selected cameras. For playback, you can use any player such as Windows Media Player.

## VAT - Intelligent Video Analysis

The Sentinel program can analyze the images from the cameras and generate automatic alarm actions following the occurrence of a movement.

To set the function, commonly defined MOTION DETECTION Click SETUP button and choose the VAT



To set a recording, proceed as follows:

- **SELECT THE CAMERA** - First in the left window select a camera, press the + button to add the detection of NORMAL MOVEMENT.
- **INDICATING ALARM ACTION** - Select in the left window the NORMAL MOVEMENT voice or another trigger the alarm. Press the + button in the right window to match the alarm action to perform. The following are available **ACTION ALERT**:



PLAY SOUND - Plays a WAV sound via the PC sound card or alternatively drives the buzzer PC for a programmable duration.

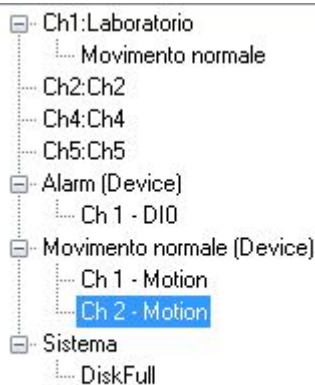
MESSAGE TO VIDEO - Displays a screen warning message overlay in the image

GO TO PRESET - If you have one or more motorized cameras or video servers that control speed dome cameras you can be called a PRESET later alarm to automatically rotate the camera to the preset position. It is possible to simultaneously rotate multiple cameras in response to a single detection.

SEND EMAIL - Send warning e-mail. You should enable sending email and specify the parameters in the system settings.

Sentinel can handle alarms from different origins. The top window on the left there are some items that represent the different **CAUSES**

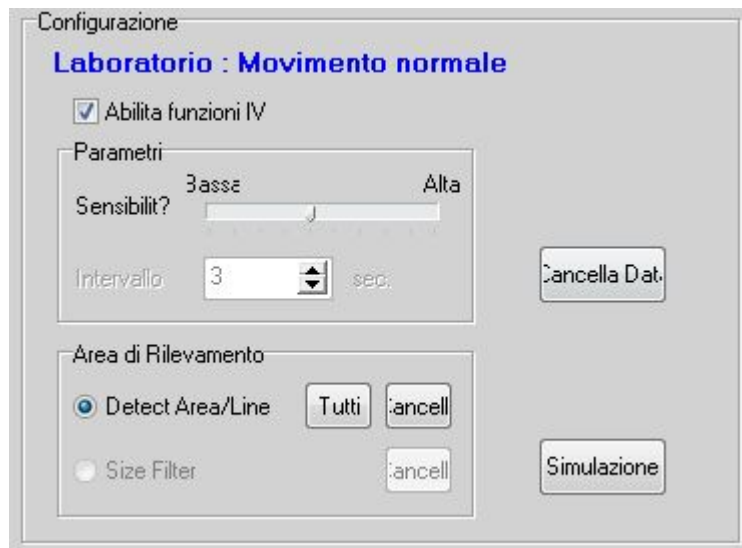
### ALARM GENERATION



- CH1 --- CH36 - MOVEMENT NORMAL - This is the detection of the movement generated by the software
- ALARM (DEVICE) - These are the alarms generated by a camera onboard alarm inputs (if available)
- NORMAL MOVEMENT (DEVICE) - This is the detection of the movement carried out by the camera, thanks to its internal firmware.
- SYSTEM - DISK FULL - This condition allows to generate an alarm when you run out of available space for the recording.

The detection of the Sentinel movement can be adjusted so as to avoid as far as possible false alarms. **ADJUSTMENT MOTION:**



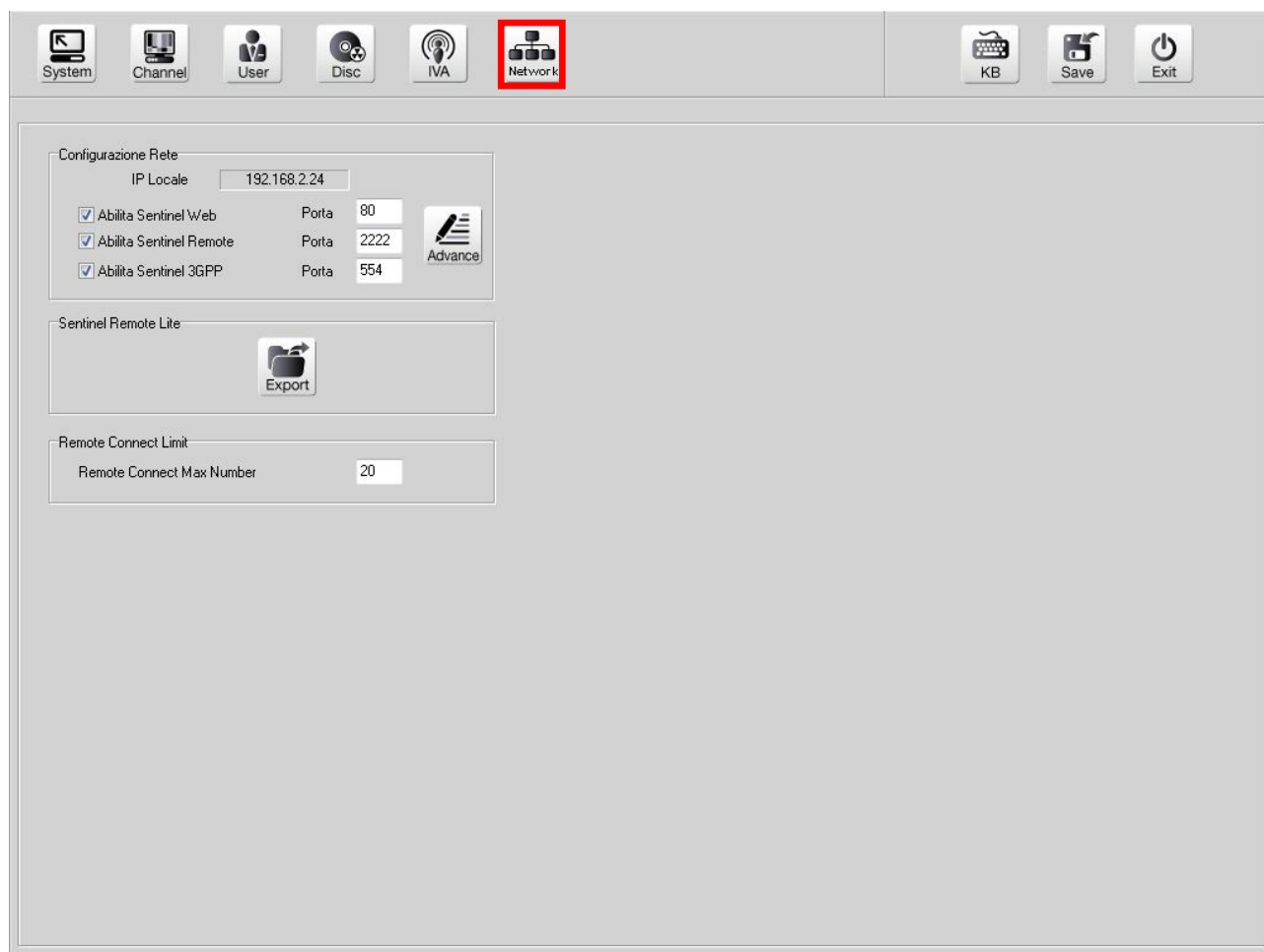


- ENABLE - Enables the selected survey
- SENSITIVITY ' - E ' can adjust the sensitivity of detection
- DETECT AREA - E 'can draw by dragging the mouse in the window area in which to perform the detection. Any movement outside of the defined area will be ignored. E 'can draw up to 3 MASKS OF REVELATION.
- SIMULATION - Allows you to test the programmed functions.

## remote Control

The Sentinel program allows you to connect remotely through the REMOTE client application, or even using the Internet Explorer browser and also a 3G phone. In this way instead of individually connected to individual IP cameras you can view the entire system in a single connector.

First you must enable these services in configuring the program. Click SETUP and press NETWORK



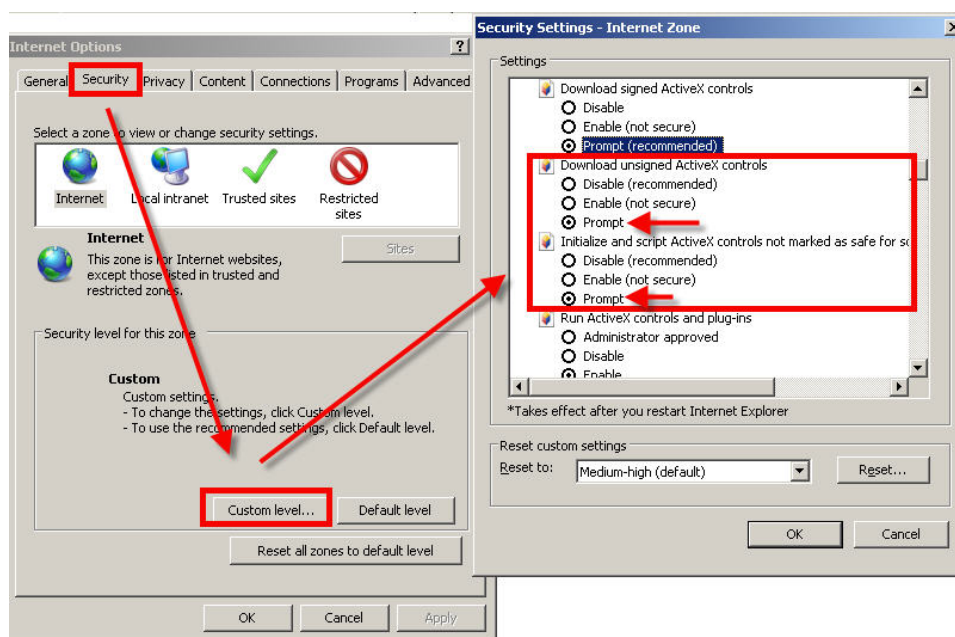
The local IP window shows the IP address of the PC on which the program to be used remotely to connect is installed.

- SENTINEL WEB ENABLE - Enables access to remote PC via browser such as Internet Explorer. The factory communications port is port 80
- ENABLE REMOTE SENTINEL - Enables access to remote PC via the REMOTE application that is installed along with Sentinel. The factory communication port is the port 2222

- SENTINEL 3GPP ENABLE - Enables access via 3G mobile devices

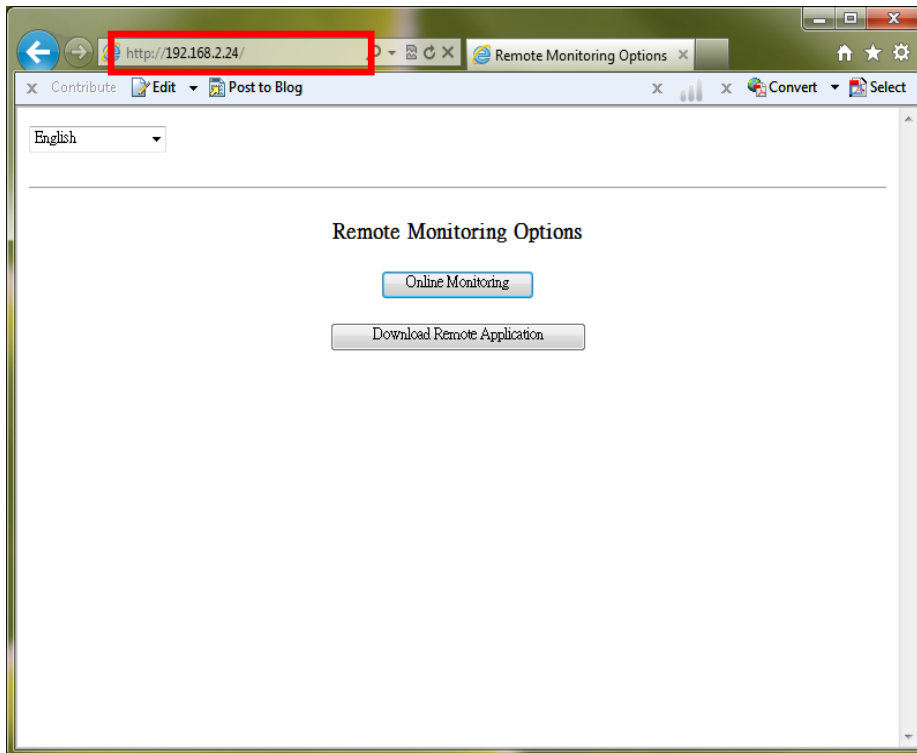
### REMOTE CONTROL WITH BROWSER

The most immediate remote connection to be made is the connection using the IE browser. This connection is through the installation of an ActiveX component that allows the browser to control the remote Sentinel software. To allow the installation of ActiveX component installed in the browser's security settings must first enable.



In the folder PROTECTION choose the area of interest (Internet or local network) and click CUSTOM LEVEL. Enable or set to PROMPT all items for the download or execution of ActiveX especially those NOT marked as safe. To connect with Internet Explorer, open the browser and enter the IP address of the PC that hosts Sentinel in the address bar. If the ENABLE SENTINEL WEB option is enabled in the software appear one containing two options page:

- ONLINE MONITORING - Enable live viewing in the browser
- REMOTE DOWNLOAD APPLICATION - Download the program for remote access (see next paragraph)



Clicking **online monitoring** you start to install the necessary ActiveX components and open the remote viewing window



In the lower left post USERNAME and PASSWORD and click CONNECT boxes. You can adjust the video quality (Medium, High, Low)

## REMOTE CONTROL WITH REMOTE PROGRAM

The remote connection can also be done by installing the REMOTE client program. This program is installed automatically with the Sentinel software. Alternatively you can also install it by connecting with Internet Explorer as seen in the previous chapter and choosing REMOTE DOWNLOAD APPLICATION.

This will download the REMOTE client application on your PC and you can install. Launch the program on the remote PC

## REMOTE



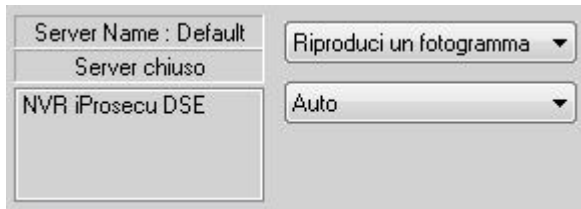
First you must enter the connection data at the remote PC. Press the **SETUP** button and select **NETWORK**

[illegible]

Enter a descriptive name for this connection, then the IP address of the PC where it resides



the software. The factory is 2222. Press + to add the remote connection to the list, save and exit programming. The new server will appear in the lower left corner



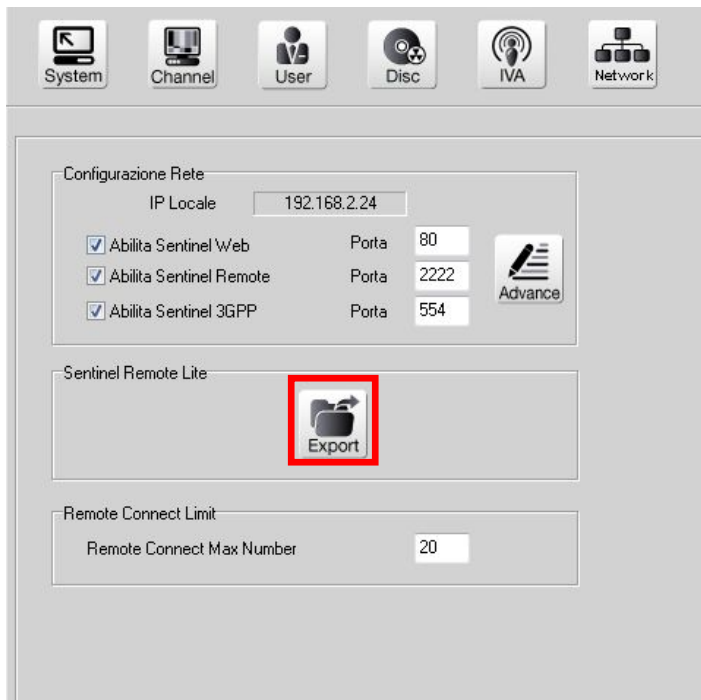
Double-click on the list name. Remember to enable the ENABLE function in the REMOTE SENTINEL Sentinel software. You will be prompted to enter USER AND PASSWORD for access after you activate the link.

Compared to the link with IE REMOTE program allows many more checks beyond simple live monitoring images.

- PLAY ONE FRAME / TWO FRAME / ALL - This setting offers 3 chances to frame rate. As a rule it is preferred to receive all frames, but in the case of low bandwidth or high number of cameras is only possible to receive an i-frame (not compressed frame) or an i-frame every 2
- SELECTION OF STREAM - E 'can choose whether to receive the stream 1 or 2 of the camera or let the automatic selection (AUTO).
- SCREEN DIVISION - E 'can divide the screen into multiple quadrants as in the local live viewing
- RECORD - Pressing the record button recording images on the hard drives of the remote PC
- PLAYBACK - E 'can search and review movies stored in the remote PC.
- SETUP - E 'can change the programming of the Sentinel remotely. Some programming steps related to the system, such as network configurations and hard disk, are not accessible remotely.

### REMOTE CONTROL WITH REMOTE LITE PROGRAM

The Sentinel software allows you to create an application that can operate the remote connection to the program without the need for any configuration. And 'the ideal tool to provide access to a personal system that you are able to train properly. To generate this application acts on the EXPORT button in the NETWORK section of settings



A window will open to generate the EXE file in a folder that you can name as you like. Before the creation of the file you can define which cameras are to be authorized for viewing and which must remain confidential.

The EXE file launched on the remote computer connects automatically and is only used for live viewing. Operation is analogous to the REMOTE program described in the previous chapter.

### REMOTE CONTROL WITH MOBILE 3G or PDA

The Sentinel software also allows connection to mobile phones and PDAs that enables live viewing of one camera at a time.

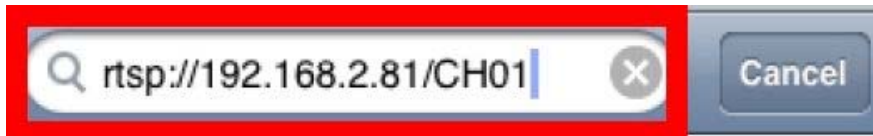
You first need to download an RTSP player program. For example, using an iPhone, you can download "OPlayer Lite" available free on the APP STORE.



There are RTSP readers for major operating systems Android, BlackBerry etc. Start the player and click OPEN RTSP URL for the connection type:

RTSP: // IP-address / CH01 to display channel 1 in real-time. Replace 01 with the channel

you want to see up to 36.



The port used by default is 554.

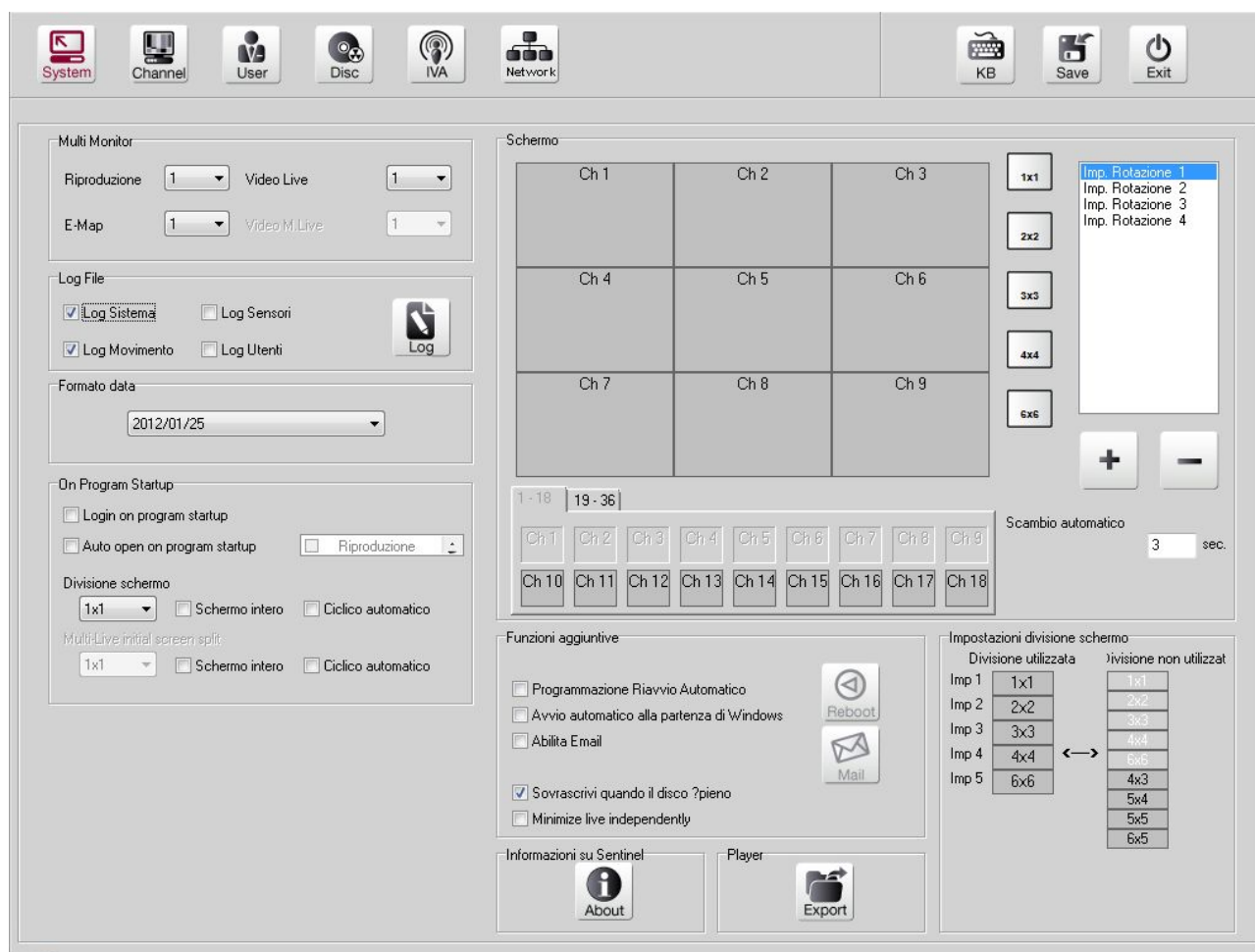
Do not forget to enable the ENABLE SENTINEL 3GPP software.



## Other settings

### SYSTEM

Press SETUP, then SYSTEM

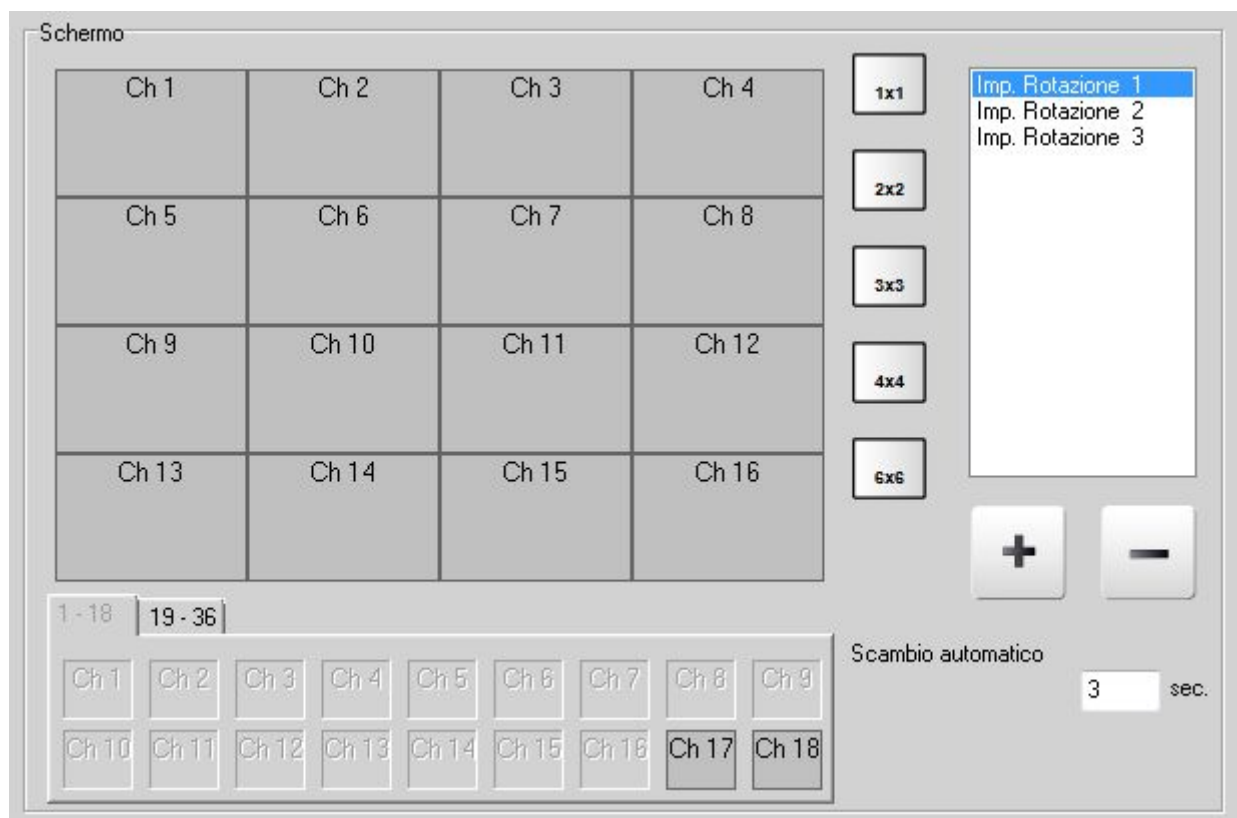


In this section we are setting certain general character functions.

- **MULTI MONITOR** - Using graphics card with multi-monitor support is possible to equip a PC multiple monitors. This can be very handy in video surveillance. Sentinel is able to automatically detect if the computer has multiple monitors and enables you to control them. In MULTI MONITOR window you can decide which monitor to display the PLAYBACK window and LIVE Vision. Other options are not active.
- **LOG FILE** - This section allows you to view and export the event log in the CSV or EXCEL format system. E 'can choose to export the SYSTEM events, events MOTION DETECTION, the ALARM INPUTS and USER accesses. Pressing

LOG shall be taken first to the display and then export.

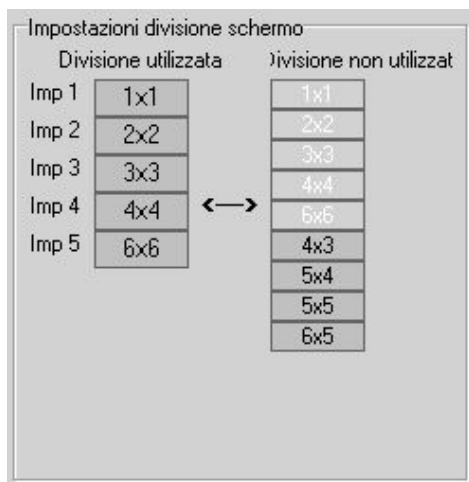
- DATE FORMAT - defines the format to use for displaying dates
- LOG IN ON PROGRAM STARTUP - With this option, the program will require the login password before showing the cameras. If this option is disabled the live monitor is free and the password is only required for additional features.
- AUTO OPEN ON PROGRAM START UP - Defines which display automatically show when the program starts.
- DIVISION SCREEN - Choose which split the screen to show the program start (1 to 36 cameras). They are also available for the startup options of full screen program and to launch the cyclical scanning startup.
- SCREEN - Sentinel allows for configuring which cameras display in the program screens.



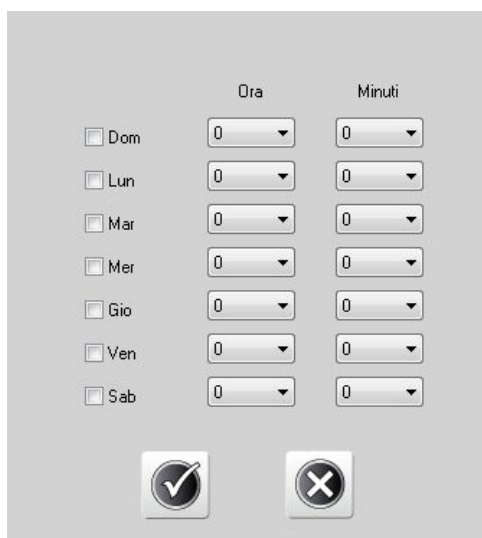
In this window you can choose with the buttons splits the screen 1x1, 2x2, 3x3, 4x4, 6x6. Depending on the view are listed to the right of the available scans. for example in the 3x3 division are available 4 rotations (tel 1-9, 10-18, 19-27, 28-36). For each screen you can drag cameras at will on the screen, taking them from the table below.

- AUTOMATIC EXCHANGE - Defines the dwell time of each screen during polling.

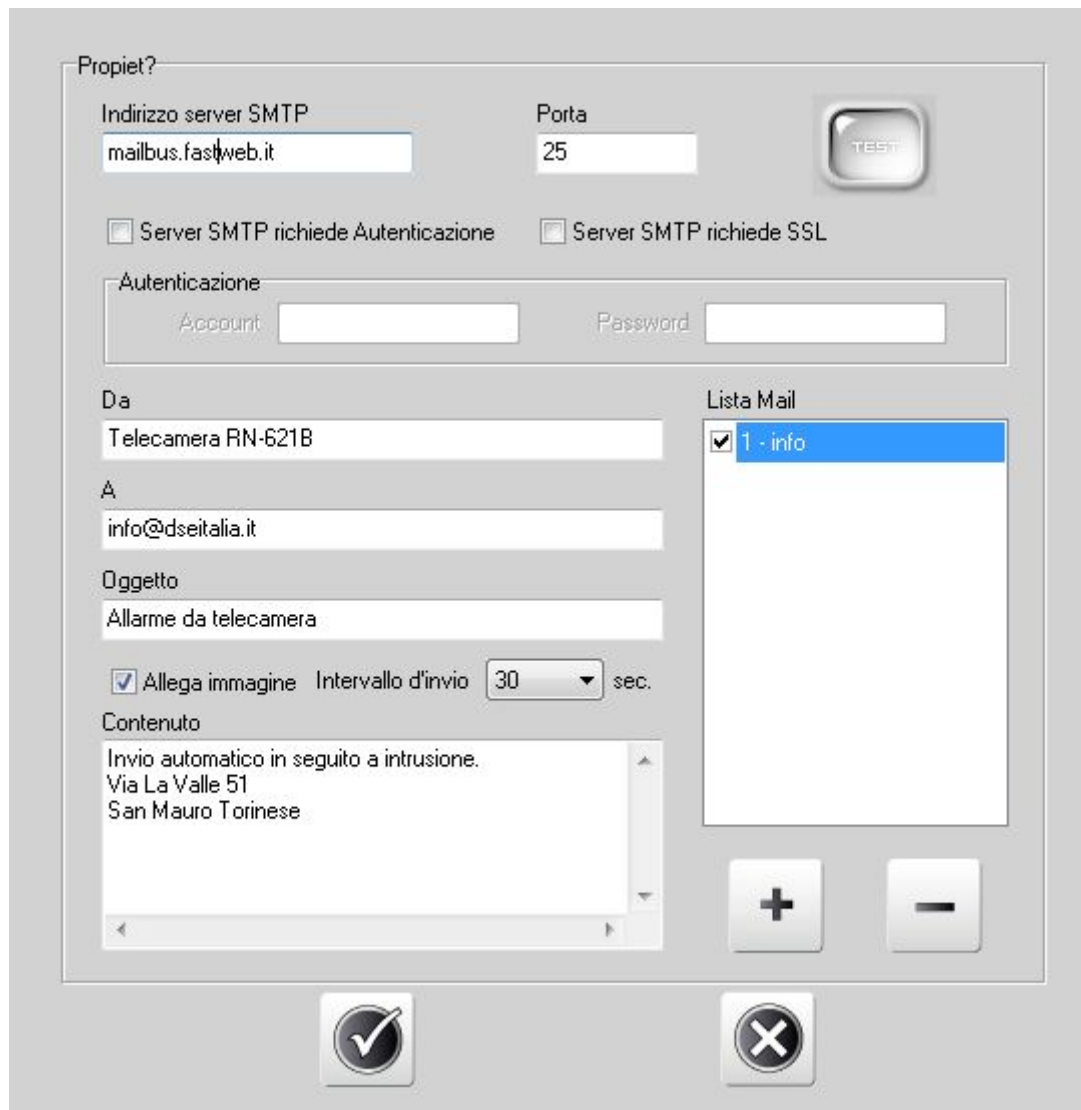
- **SETTINGS SCREEN DIVISION** - Sentinel can manage up to 5 screen divisions. Default splits are 1x1, 2x2, 3x3, 4x4, 6x6. E 'can, however, use an alternative 4x3, 5x4, 5x5, 6x5



- **PROGRAMMING AUTO RESTART** - Here you can scadenziare periodic restart of the program at a certain time each day of the week.



- **AUTOMATIC START TO WINDOWS START** - Start Sentinel at PC startup automatically.
- **ENABLE E-MAIL** - Sentinel can send emails in case of alarm. Here you can set the parameters related to sending e-mail.



Propriet?

Indirizzo server SMTP: mailbus.fastweb.it      Porta: 25      TEST

☐ Server SMTP richiede Autenticazione      ☐ Server SMTP richiede SSL

Autenticazione: Account:      Password:     

Da: Telecamera RN-621B

A: info@dseitalia.it

Oggetto: Allarme da telecamera

☒ Allega immagine      Intervallo d'invio: 30 sec.

Contenuto: Invio automatico in seguito a intrusione.  
Via La Valle 51  
San Mauro Torinese

Lista Mail: ☒ 1 - info

+      -

✓      ✗

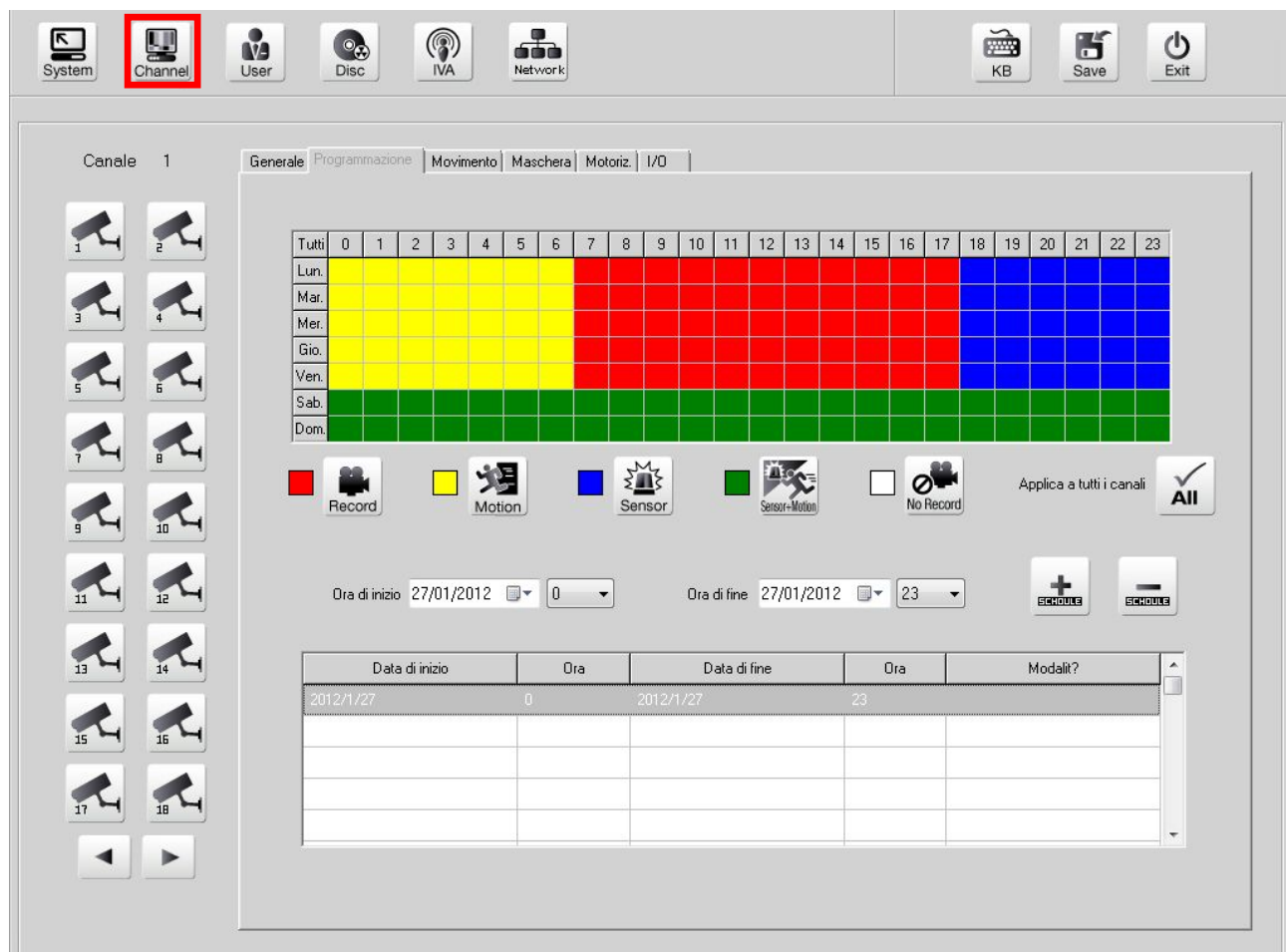
You must enter the address of the SMTP server and the port used (usually 25), as well as any authentication. In the DA indicate the description to be included in the email as the sender, in the field CONTENT OBJECT and what you intend to write in the message. In the field, enter the recipient's email address to be added to the list with the + button. The check signal in the adjacent list of every address allows you to temporarily disable it. The item IMAGE ANNEX defines whether to attach to email the photos of the event.

- WHEN DISK FULL OVERWRITE - Allows you to continue recording once out of disk space by overwriting the older images.
- MINIMIZE LIVE independently - it allows to minimize the Sentinel program while keeping close to a taskbar Quick Launch toolbar.
- ABOUT - About the program

### PROGRAM REGISTRATION

Sentinel can record in different modes depending on the time of day based on a programmer. Click SETUP and press CHANNEL. Then to choose folder

### PROGRAMMING.



There are 5 recording modes: RED - YELLOW normal Continuous recording -

Recording in motion detection BLUE - Registration of detection alarm input

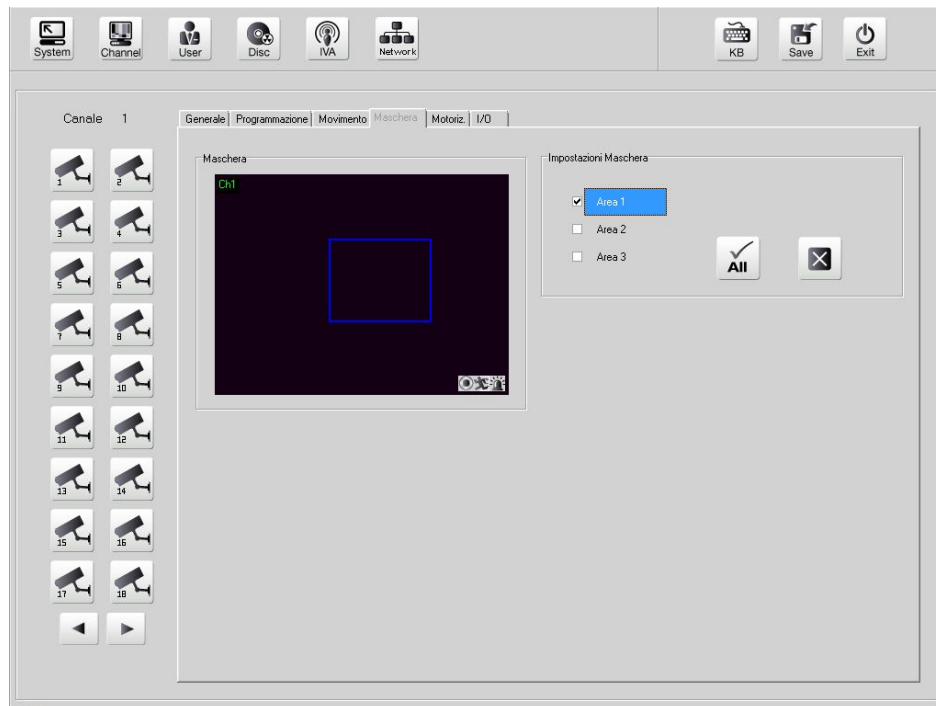
GREEN - Recording in motion detection and alarm input detection WHITE - No registration

The upper chart shows the days of the week and hours of the day. With the mouse, it is possible to determine that the recording mode adopted in the various time slots.

In addition to the hourly programming a table is available for **special occurrences that have PRIORITY 'ON TIME PROGRAMMING**. And 'possible to insert periods FROM ... TO with recording mode choice.

### PRIVACY MASKING ZONE

Sentinel allows you to darken some areas of the image to protect privacy, for example in monitoring of jobs. Click SETUP, CHANNEL and choose the folder MASKS

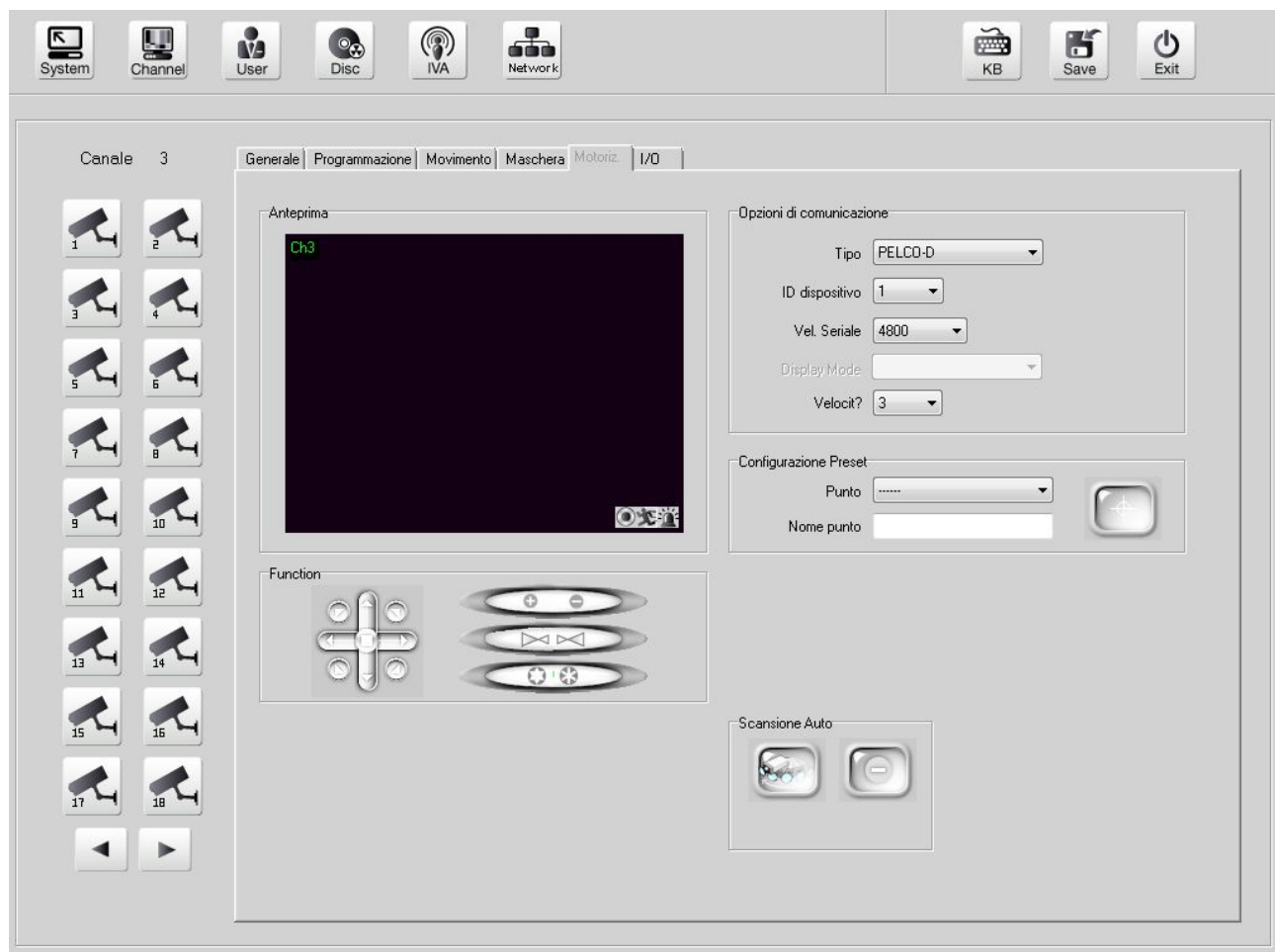


For each camera, you can set up to three masks (AREA 1,2,3) that will appear in the live vision as covered by a black box.

### CONTROL PTZ CAMERA SPEED DOME

If Sentinel is connected to the video server with the command port for speed dome cameras it is capable of controlling the movements of the camera.

To set the communication parameters press SETUP-CHANNELS-motorized.



Here you can set:

- TYPE - Set the communication protocol. The options available depend on the connected video server.
- Device ID - The camera address on the RS485 BUS
- VEL.SERIALE - Bus speed, must be consistent with the camera
- SPEED '-' - Speed of moving the camera
- SETTING PRESET - E 'can set the camera presets by positioning the camera, selecting the STEP (1 to 19), giving the preset name and press the next button.
- FUNCTION - The buttons for controlling the movements of the camera, the zoom, focus and aperture. These buttons will also be available in the live window, when you select a camera for which is expected to PTZ control.



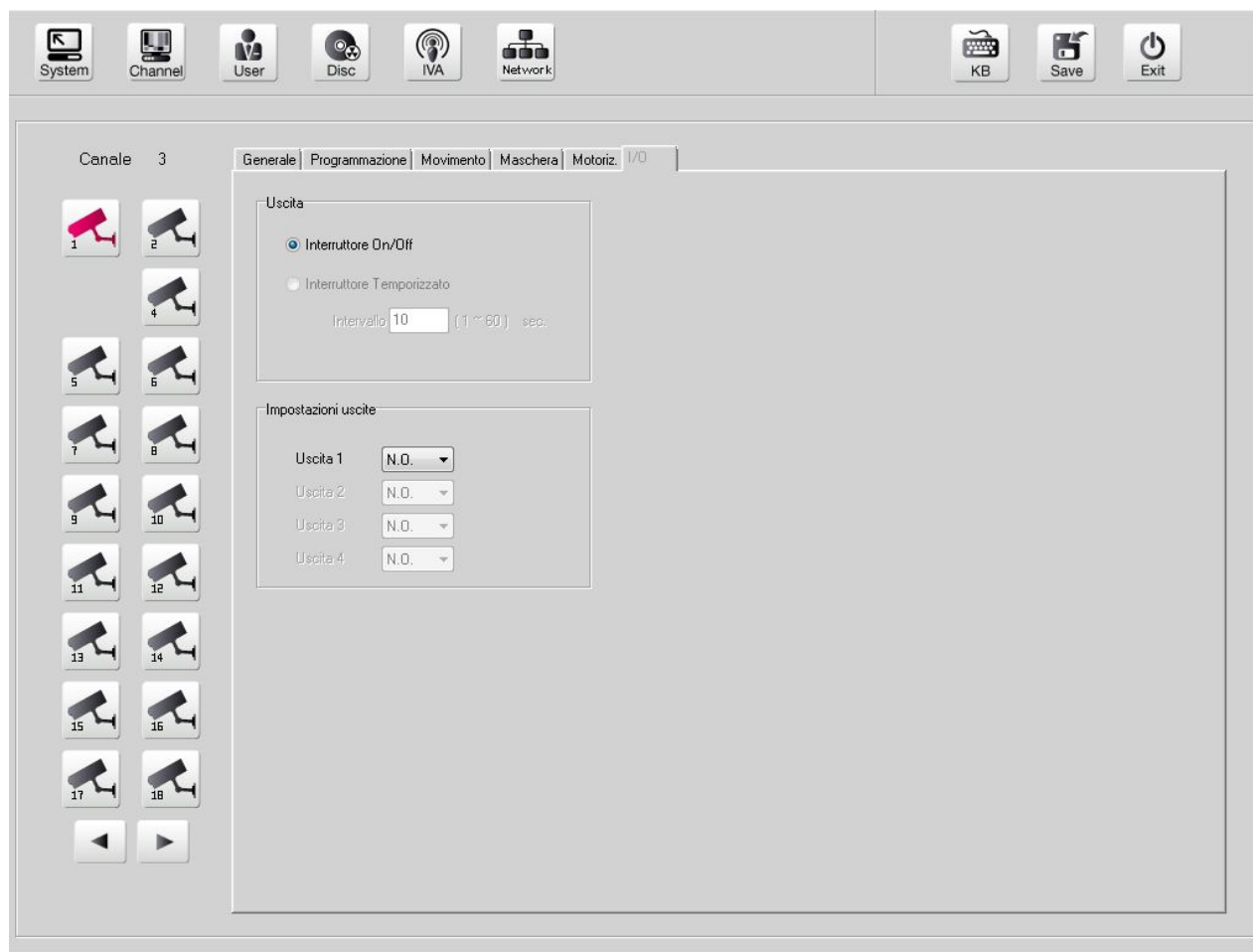
- AUTO SCAN - These buttons start and stop automatic scanning (SCAN)

set in the internal menu of the camera.

### I / O - CONTROL OUTPUT

If the cameras connected to Sentinel have alarm outputs, you can control them from the live display window by pressing the right mouse button.

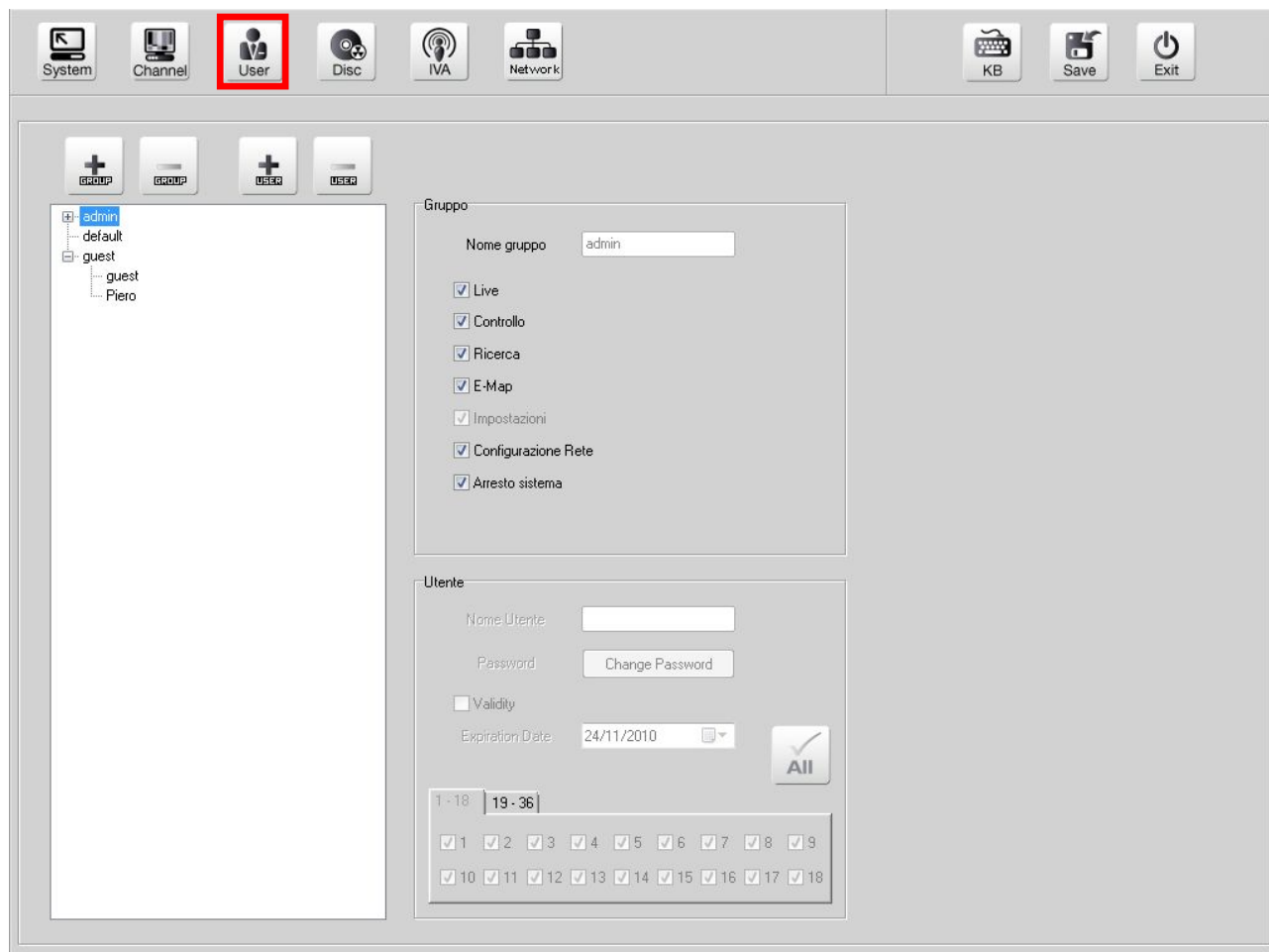
In the settings it is possible to make some settings related to the outputs that closely depend on the cameras used, for example, their operation NO / NC



### USERS CONFIGURATION - (USER)

The Sentinel program allows the management of different users, each with a personal password which can have access to specific functions. Click SETUP-USER





In the table on the left users who are divided into three GROUPS are listed:

- ADMIN - These users have access to all camera and system functions. They can also carry out other users' setting.
- DEFAULT - These users have access to view and configure the cameras for which they are authorized, but not to system settings.
- GUEST - These users have access only to the pure vision of the cameras for which they are authorized.

And 'possible to add other groups with different levels of personalized access by pressing the button GROUP +

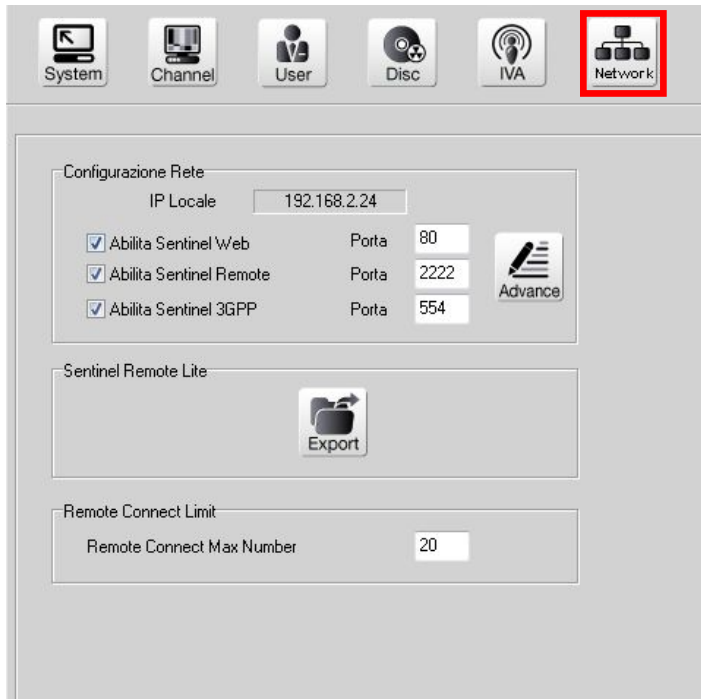
For each group you can add users with USER + button. For each user you can not set permissions, which are those of the group to which it belongs, but you can assign a username and password that will make Precide identificabiile in LOG events.

- GROUP - This section puts forth qualifications of the selected group. Selecting a user these parameters are not mdificabili
- USER - This section defines the user's USERNAME and PASSWORD, a

if any expiry or authorized channels.

### NETWORK CONFIGURATION

Click SETUP and press NETWORK



In addition to authorizations for remote access and the button to export the executable program of remote access which has been mentioned earlier, here it is:

- **CONNECT REMOTE MAX. NUMBER** - In which it is possible to limit the maximum number of remote stations that can be connected simultaneously.