

# RJ Series IP Cameras

Speed Dome of ONVIF IP network

Version C - Reference RJ-SDM18-5



## Installation and Configuration

How to connect the telecamera Come make the connection in the network

How to configure the camera



## Contents of this handbook

The range of cameras NAKED RJ series is a range of IP cameras for network connection developed for use with NVRs. This manual refers to only RJ-SDM18-5. In this manual model explains how to connect the camera, how to make the basic adjustments and how to configure the parameters for the network connection.



## Introduction

The DSE speed dome IP cameras RJ series are IP Network Cameras with H264 / H265. These cameras "NAKED" that is not equipped with on NAS and SD card recording their option, either hardware accessories such as audio inputs, alarms etc ..



They are developed to work with network video recorders NVR ONVIF ranging always provided in combination to handle the recording and remote access functions.

The units are connected to a LAN via RJ45 port as a computer or other network drives and images can be displayed on a PC using Internet Explorer browser.

The power of the cameras is possible with the 12VDC adapter (included). the POE is not supported due to the absorption of the illuminator.

The RJ Series cameras fully support the ONVIF international protocol and are compatible with any IP recording software or network video recorder (NVR) multi-protocol capable of handling this standard.





## Technical data

See updated at tables:

[https://www.dseitalia.it/Prod\\_telecamere\\_ip\\_speed\\_dome\\_PTZ.htm](https://www.dseitalia.it/Prod_telecamere_ip_speed_dome_PTZ.htm)



# Installation

## CONNECTIONS

The cameras speed dome series RJ have 2 sun connections: a mains socket and a 12VDC power plug,



- NETWORK PORT RJ45 - RJ45 FEMALE connector to connect the LAN. To connect to a hub or network switch using a standard LAN cable. To directly connect a single PC using a crossover cable (crossover).
- 12VDC - plug which connect the power supply 220VAC / 12VDC by at least 3A (included)

## VERIFICATION OF CONNECTIONS

After connecting the camera to the power supply check that it performs an automatic rotational movement which certifies the proper nutrition. If the camera does not perform any movement check the power supply.

After connecting the network cable to the switch verified that the LEDs of the switches that correspond to the port that is used to start flashing. If you check remain off the network cable.

## MOUNTING THE CAMERA

# INSTALLATION MANUAL

## IP CAMERAS SPEED DOME RJ-SDM18-5



Page: 6

---

The cameras are to be fixed to the wall with the supplied mounting bracket. The connecting cord extends through the bracket.

The camera housing is watertight and can be exposed to rain. The connections must be protected from the weather. The cable entry may be provided at the center of the bracket if the cable passage is walled. Alternatively a lateral cable entry is available in the lower part of the bracket.





## Network Configuration

After providing power to the camera via the 12VDC power supply and after having connected the camera to the network switch with the LAN cable, the configuration of the network parameters must proceed in such a way to be able to make the cameras accessible by computer. The cameras are equipped with an IP address of 192.168.1.160 factory.

### CLIENT SOFTWARE VIDEO SURVEILLANCE (VSC)

The CD supplied with the camera includes the VSC software for Windows that you should install on any PC on the network. The function of this software is to detect the presence of the camera in the network, regardless of its address, and allow you to change the camera address in order to make it consistent with your network. We recall that because the camera is visible from the other PCs on the network it is necessary that the first 3 address parts are the same as other network PC and is equal also the subnet mask. And 'advisable to network one camera at a time and insert new ones after you have set the precedenti. Il VSC program also allows you to view live camera images.

### PRELIMINARY CHECKS

Before you must obtain from your network some information about the management of the IP addresses used on your network. E 'need to know an IP address can be assigned to the camera that is not equal to any other device already present in the network. If you are uncertain about the operation of your network, you can use certain commands in DOS PROMPT.

On a network PC launched a DOS window available between the Windows accessory programs.

Type IPCONFIG at the command prompt and press ENTER. They will see the TCP / IP parameters. The second line is the IP address assigned to your computer.

# INSTALLATION MANUAL

## IP CAMERAS SPEED DOME RJ-SDM18-5



Page: 8

```
C:\ Prompt dei comandi
Microsoft Windows XP [Versione 5.1.2600]
(C) Copyright 1985-2001 Microsoft Corp.

C:\Documents and Settings\DSE>ipconfig

Configurazione IP di Windows

Scheda Ethernet Connessione alla rete locale (LAN):

    Suffisso DNS specifico per connessione: fastwebnet.it
    Indirizzo IP. . . . . : 192.168.2.3
    Subnet mask . . . . . : 255.255.255.0
    Gateway predefinito . . . . . : 192.168.2.1

C:\Documents and Settings\DSE>
```

In the above example the address of the PC on which you are working is 192.168.2.3 and the subnet mask used is the classic 255.255.255.0. The camera can therefore assign an address chosen by the 192.168.2.XXX type, where XXX stands for a number between 0 and 255.

It is important to choose an address that is not already used by other network equipment. To verify that the chosen address is free, try to make a PING from the same DOS window by typing PING followed by a space and by the IP you wish to assign to the camera. If there is no device responds to that address, you will receive 4 REQUEST TIME OUT as in the following example:

```
C:\WINDOWS\system32\cmd.exe
Microsoft Windows XP [Version 5.1.2600]
(C) Copyright 1985-2001 Microsoft Corp.

C:\WINDOWS\system32\cmd.exe>ping 192.168.1.6

Pinging 192.168.1.6 with 32 bytes of data:

Request timed out.
Request timed out.
Request timed out.
Request timed out.

Ping statistics for 192.168.1.6:
    Packets: Sent = 4, Received = 0, Lost = 4 (100% loss),

C:\WINDOWS\system32\cmd.exe>
```



All cameras support the automatic IP address assignment from a DHCP server. This mode, however, is not recommended because in the event of power failure or restart of the equipment it is possible that the cameras IP address change necessitating a reconfiguration of the NVR.

### SETTING ADDRESS WITH THE PROGRAM CMS

After connecting the camera you must change the camera address to assign one consistent with its own network (first 3 parts of the address common to all networked devices) .The CMS program on the CD makes this very simple operation without having to change the network settings of the PC on which you are working.

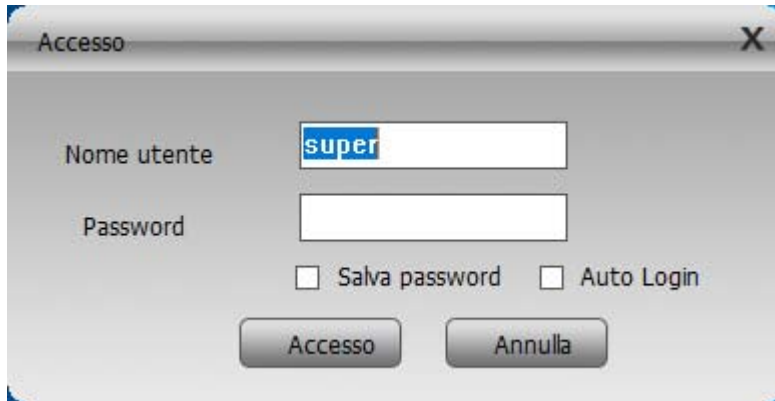
Proceed as follows:

1. Insert the CD into a PC player and explore the content. You will find an installation file ---. Exe, double click on it and install the program on your PC. During installation, you can specify the program installation folders and saving files
2. Once the installation is complete, run the CMS program from its desktop icon

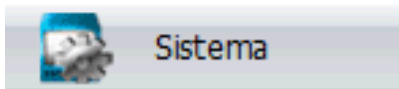


3. At the first start the program asks you to create an administrator account in the program. The factory password is EMPTY. You can specify a user name and password at will that will

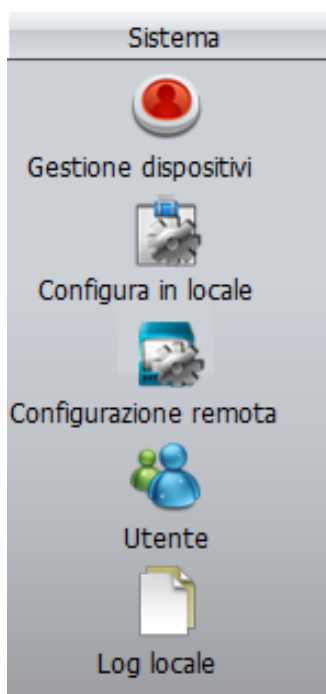
be remembered and select SAVE PASSWORD. Oppura simply enters beating ENTER



- Click the System button in the column at the bottom right to open a menu for system management



- On the right the following menu. Click on the top button with voice DEVICE MANAGEMENT



- Press ADD AREA enter the name chosen for the area where you will find the camera that you want to add

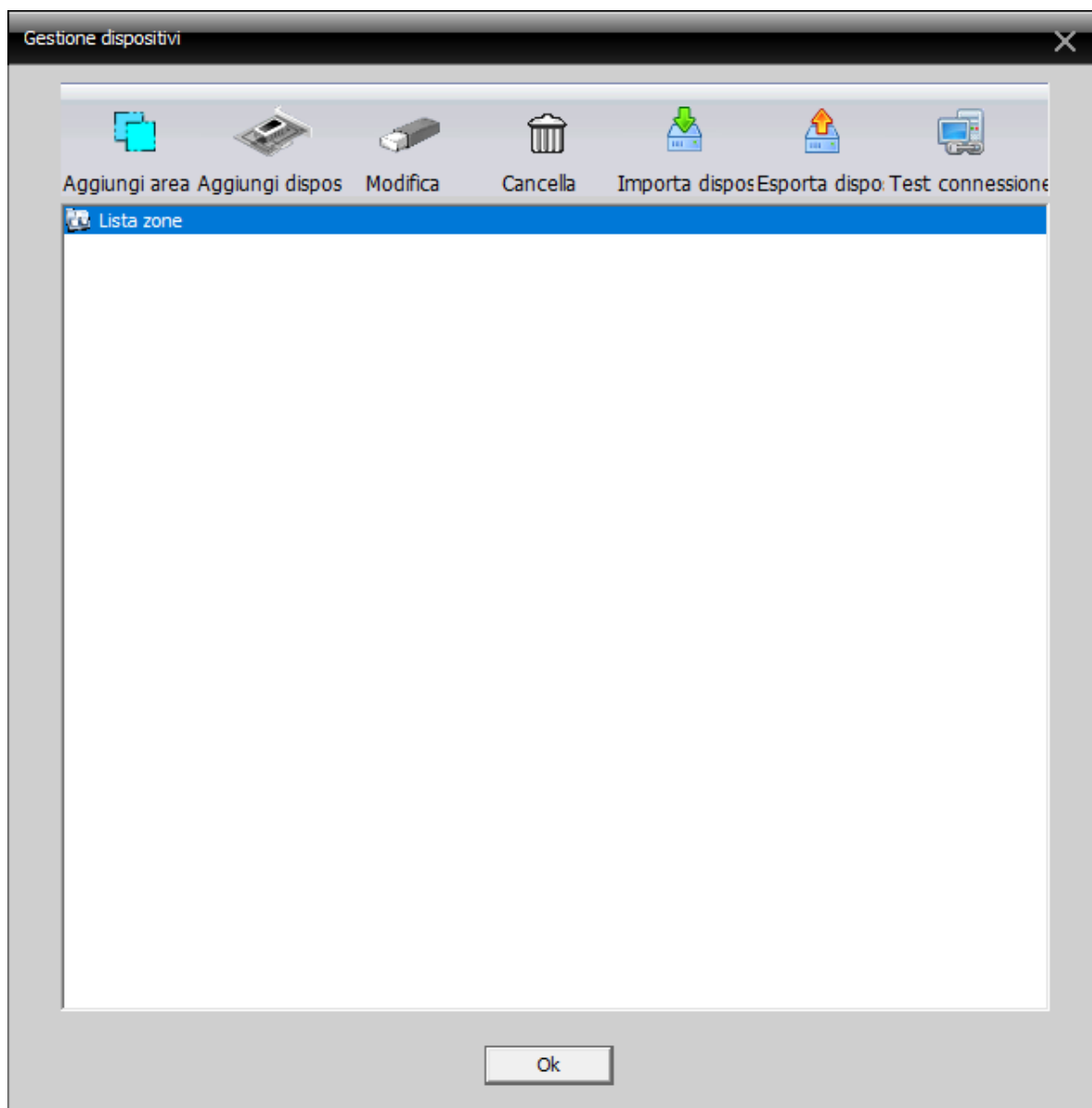
# INSTALLATION MANUAL

## IP CAMERAS SPEED DOME RJ-SDM18-5



Page: 11

---

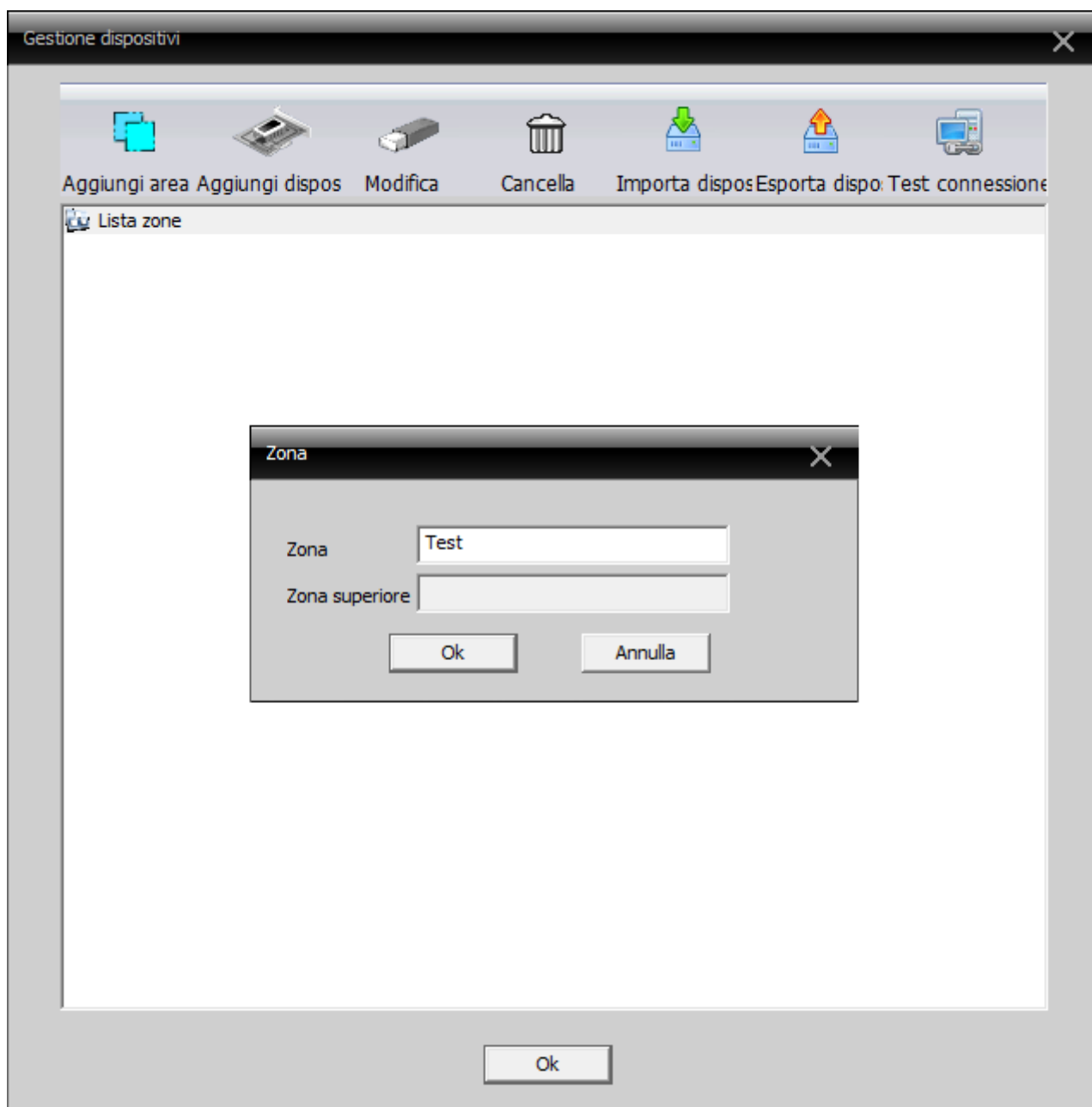


# INSTALLATION MANUAL

## IP CAMERAS SPEED DOME RJ-SDM18-5



Page: 12



# INSTALLATION MANUAL

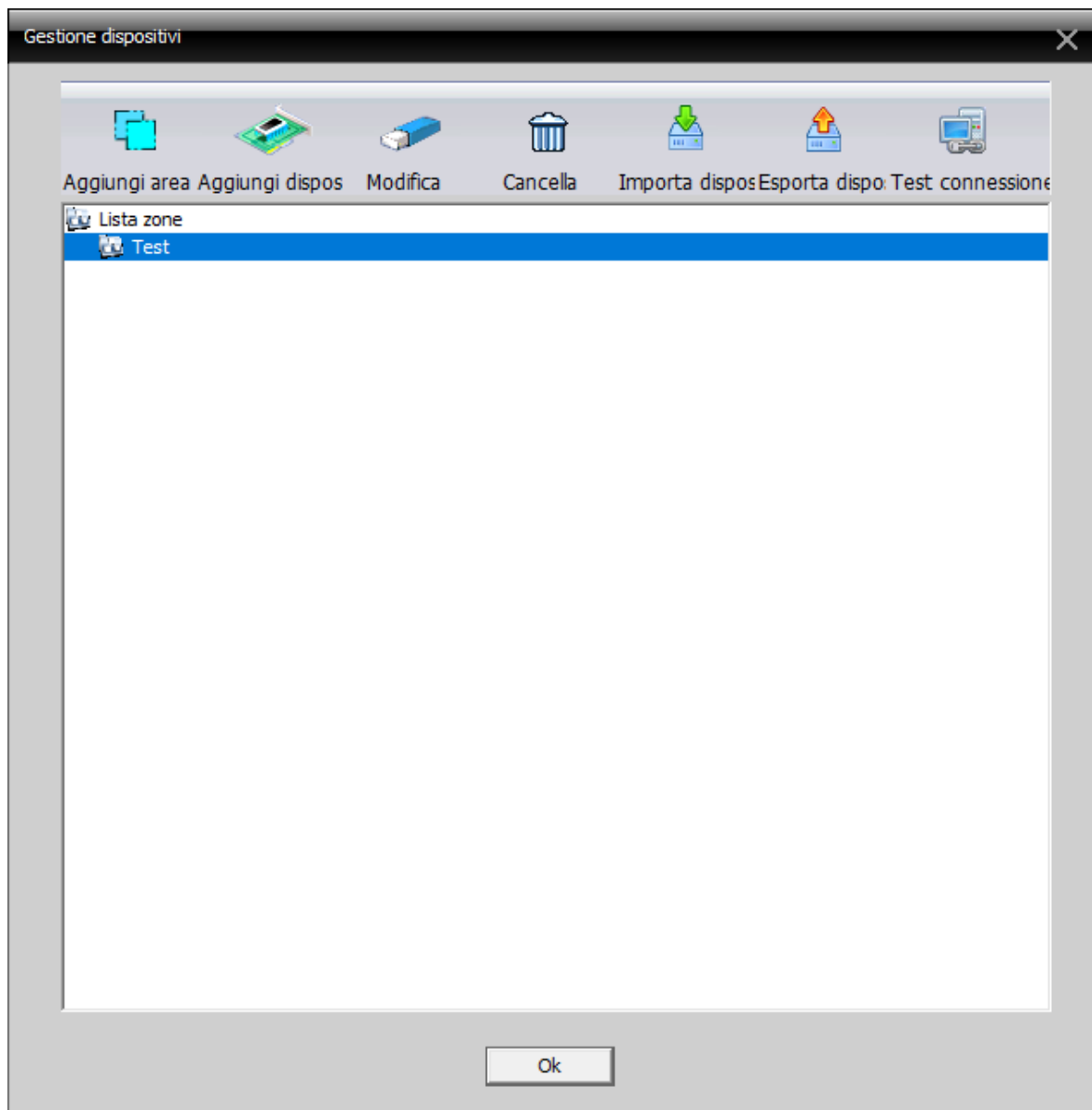
## IP CAMERAS SPEED DOME RJ-SDM18-5



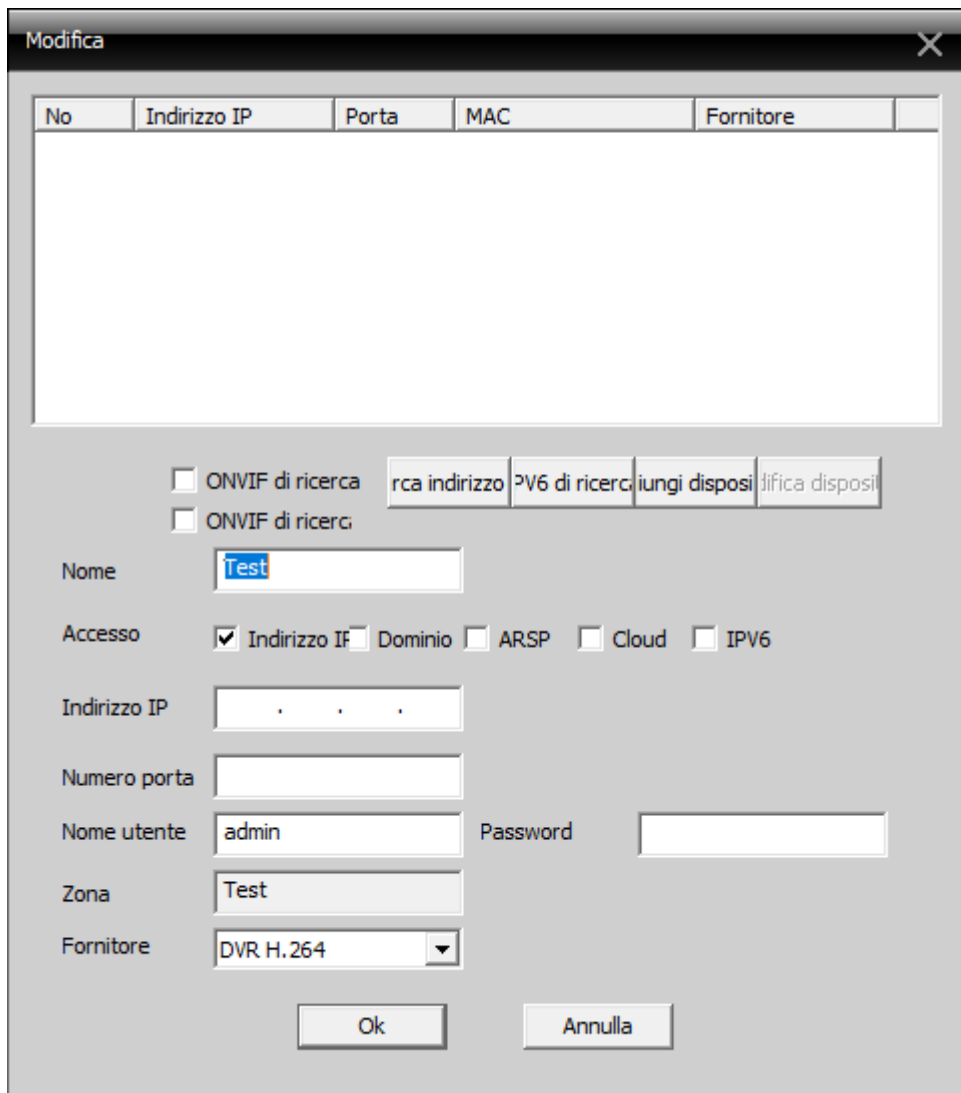
Page: 13

---

7. Select the area you just created and click on the ADD DEVICE button



8. This will open the following window that allows you to manage devices



No	Indirizzo IP	Porta	MAC	Fornitore
----	--------------	-------	-----	-----------

☐ ONVIF di ricerca   ☒ ONVIF di ricerca

☐ ONVIF di ricerca

Nome:

Accesso: ☒ Indirizzo IP ☐ Dominio ☐ ARSP ☐ Cloud ☐ IPv6

Indirizzo IP:

Numero porta:

Nome utente:  Password:

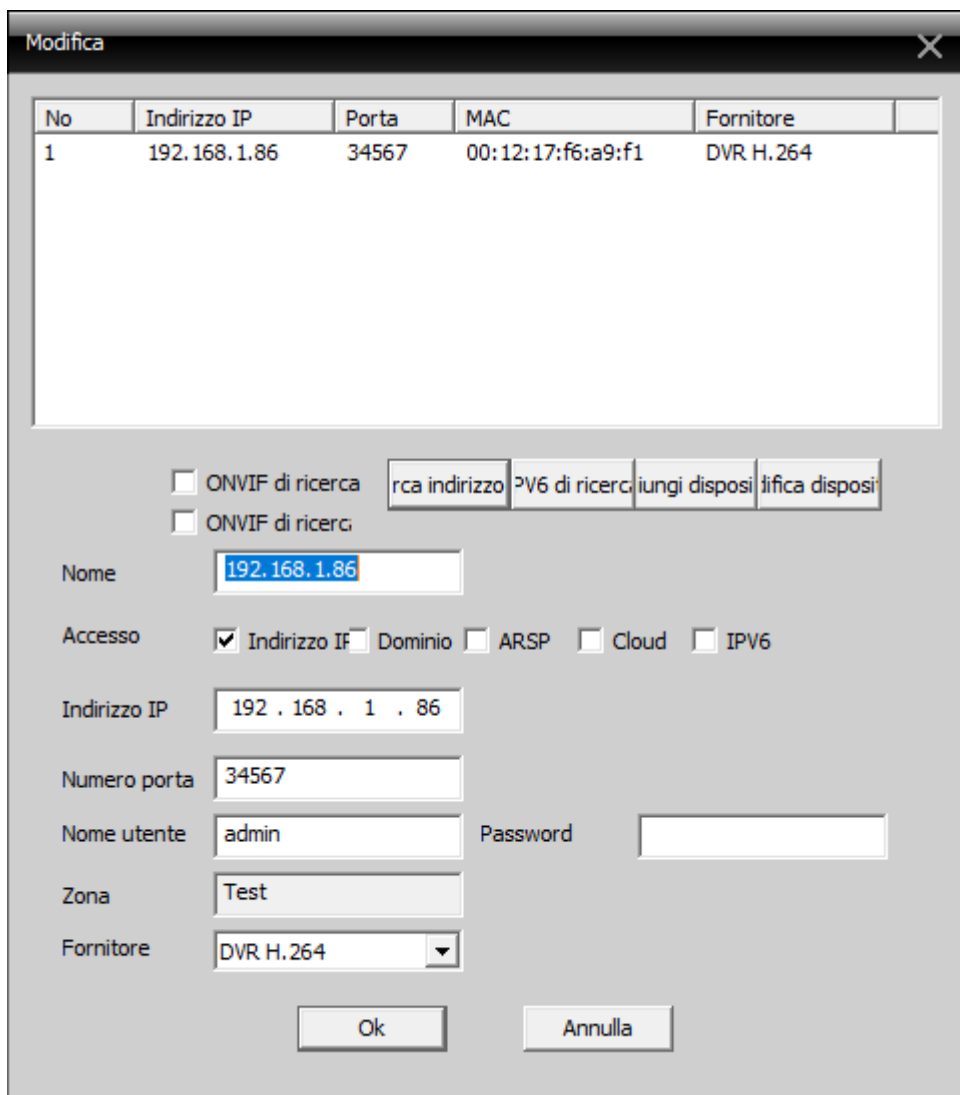
Zona:

Fornitore:

Ok   Annulla

Click on the SEARCH ADDRESS button to view all the cameras connected to your network.

The default IP address of these cameras is 192.168.1.10



The screenshot shows a window titled "Modifica" with a close button (X) in the top right corner. It contains a table with the following data:

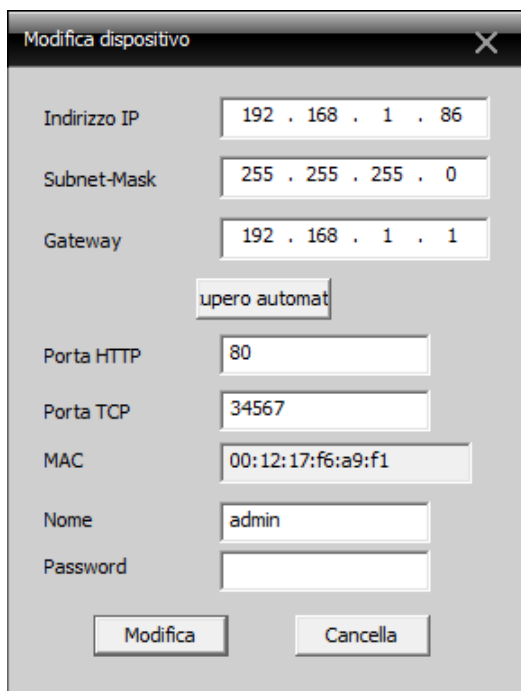
No	Indirizzo IP	Porta	MAC	Fornitore
1	192.168.1.86	34567	00:12:17:f6:a9:f1	DVR H.264

Below the table, there are several configuration options:

- ☐ ONVIF di ricerca: rca indirizzo PV6 di ricerca iungi dispositi ifica dispositi
- ☐ ONVIF di ricerca
- Nome: 192.168.1.86
- Accesso: ☒ Indirizzo IP ☐ Dominio ☐ ARSP ☐ Cloud ☐ IPV6
- Indirizzo IP: 192 . 168 . 1 . 86
- Numero porta: 34567
- Nome utente: admin Password: [empty field]
- Zona: Test
- Fornitore: DVR H.264

At the bottom, there are two buttons: "Ok" and "Annulla".

9. Before you add the camera, you must change the default IP address to make it consistent with your network. To do this select from the list the camera that you want to run and press the EDIT DEVICE button.
10. This will open a window containing all of the camera's network settings that we can modify to our liking.

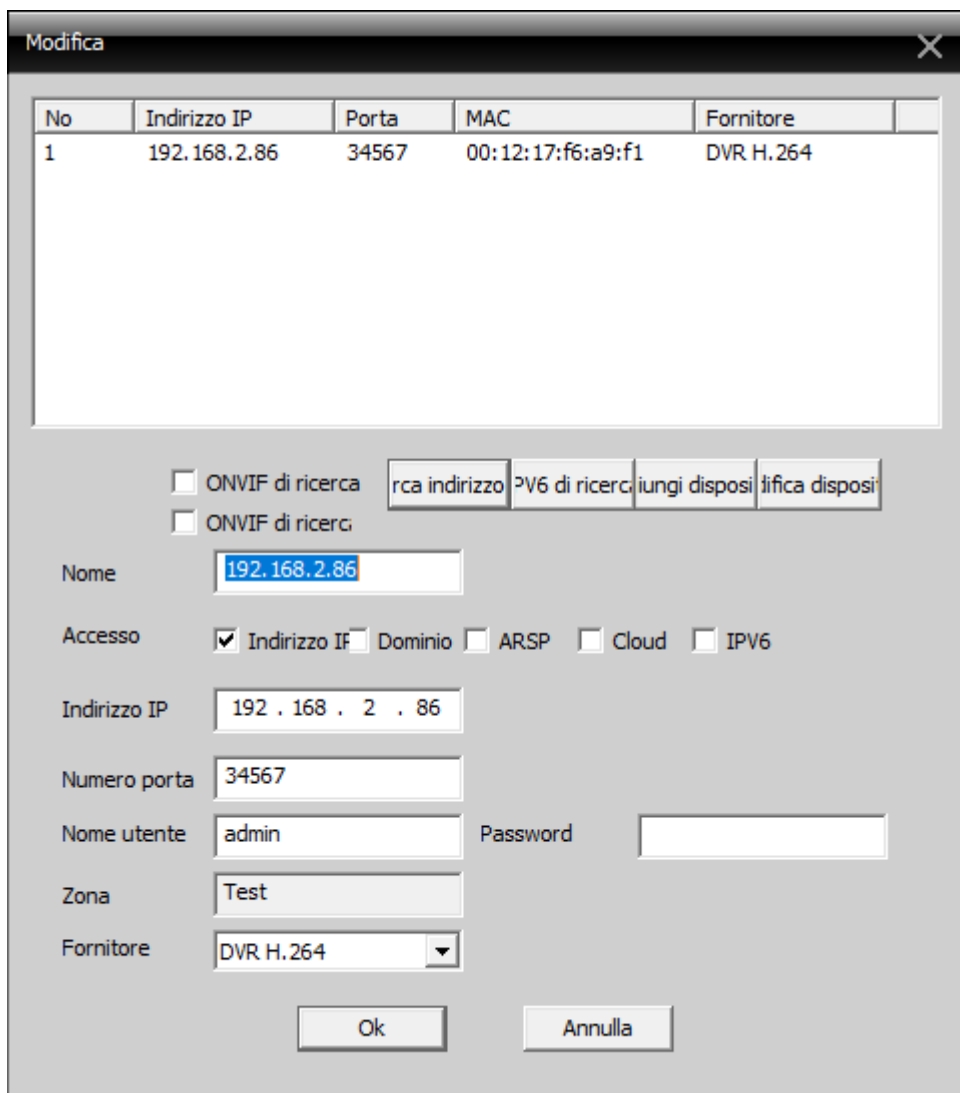


Indirizzo IP	192 . 168 . 1 . 86
Subnet-Mask	255 . 255 . 255 . 0
Gateway	192 . 168 . 1 . 1
<input type="checkbox"/> upero automat	
Porta HTTP	80
Porta TCP	34567
MAC	00:12:17:f6:a9:f1
Nome	admin
Password	
<input type="button" value="Modifica"/> <input type="button" value="Cancella"/>	

Enter the new IP address and make sure all other data is correct (the IP address and gateway segment should be equal). Confirm the changes by pressing CHANGE. The password of factory camera and VUOTA. Nell'esempio below we modified the camera address 192.168.2.86 in because obviously we are working on a network that uses class 192.168.2.xxx addresses. We have chosen 86 in a purely arbitrary because, for example, we decided to give our 6 cameras addresses from 81 to 86. We have kept the subnet mask of 255.255.255.0 factory because our network, as most internal networks using this subnet mask. I subsequent parameters are not essential for the operation,

11. You will be brought back to the previous screen. Press again on the ADDRESS SEARCH button to display the camera with the new address.





No	Indirizzo IP	Porta	MAC	Fornitore
1	192.168.2.86	34567	00:12:17:f6:a9:f1	DVR H.264

☐ ONVIF di ricerca

☐ ONVIF di ricerca

Nome: 192.168.2.86

Accesso: ☒ Indirizzo IP ☐ Dominio ☐ ARSP ☐ Cloud ☐ IPv6

Indirizzo IP: 192 . 168 . 2 . 86

Numero porta: 34567

Nome utente: admin Password:

Zona: Test

Fornitore: DVR H.264

Ok Annulla

Now select the camera in the list and click on the ADD DEVICE button to add the camera to the area selected devices and to control the video with the program. Click OK twice to close the open windows and return to the main screen of the software.

## TEST THE CAMERA WITH THE PROGRAM CMS

1. You can now view the camera's live video that you just added to verify that it was added correctly. To do so, expand the IP address of your camera to display the type of device on the top left of the page

# INSTALLATION MANUAL

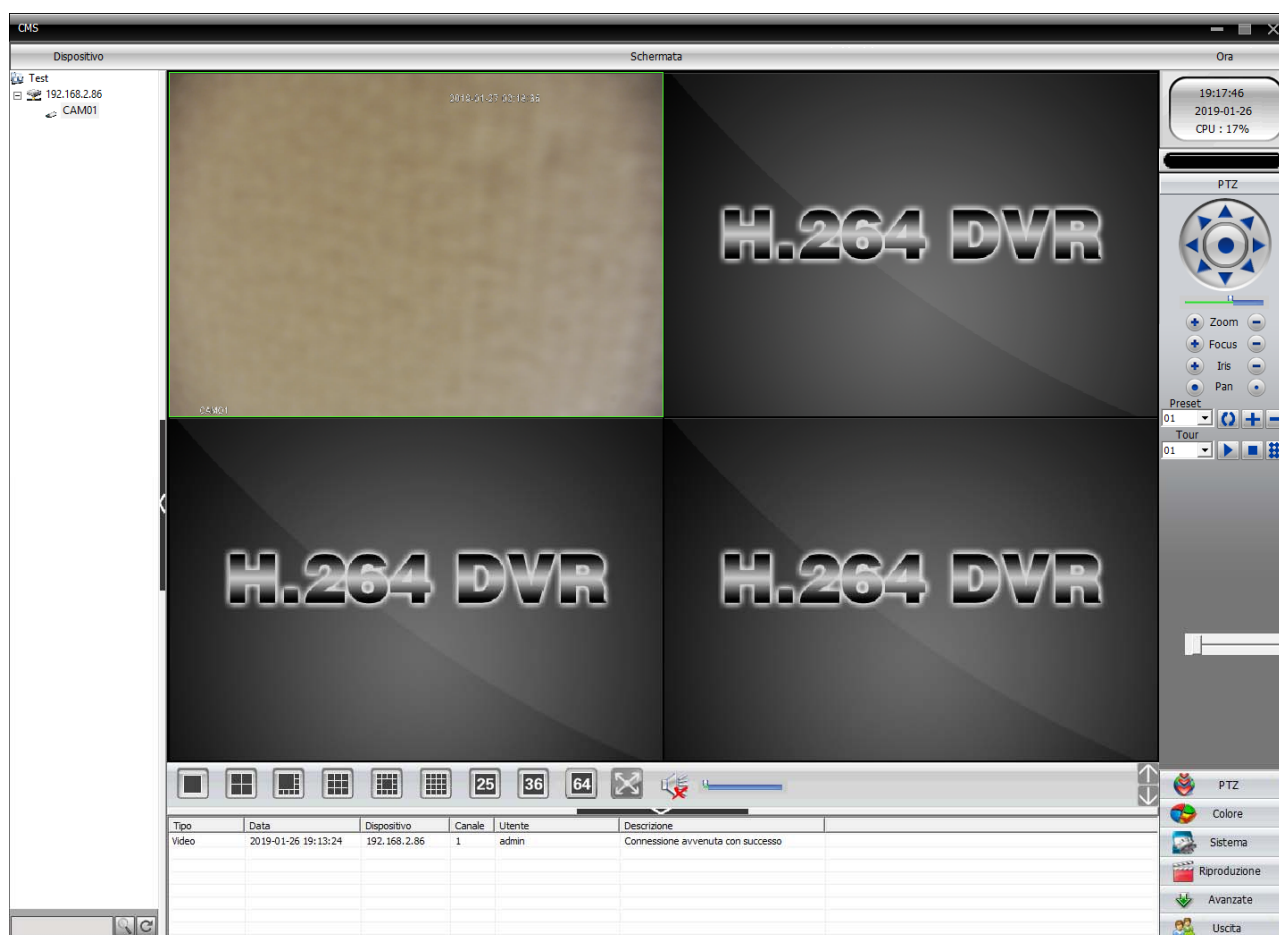
## IP CAMERAS SPEED DOME RJ-SDM18-5



Page: 18



2. Drag the device that appears (in this example CAM01) in one of the windows in the central section of the software for the video visualizzarci



## USING THE PROGRAM CMS AFTER INSTALLATION

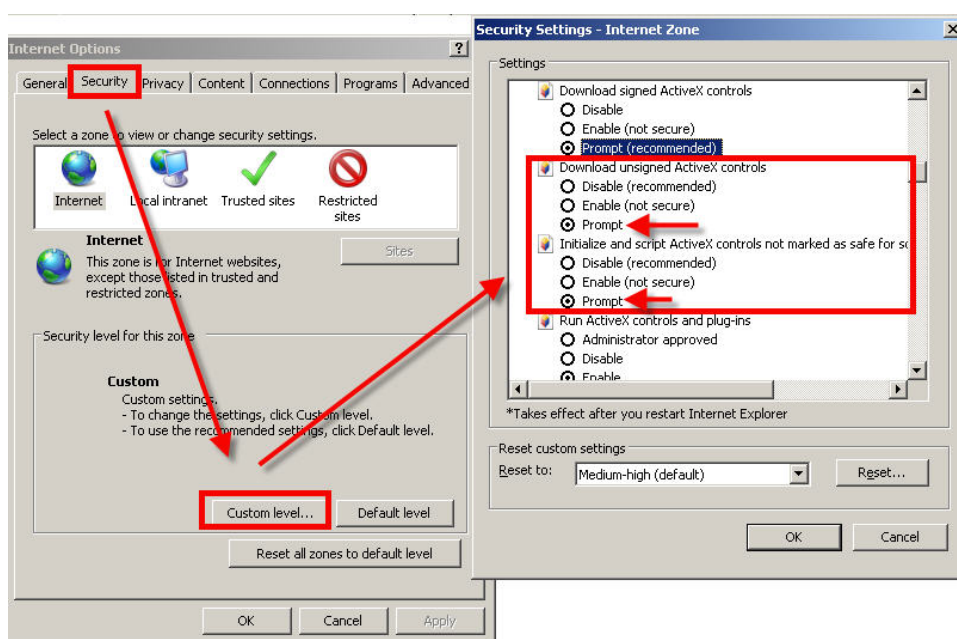
In addition to being useful in the installation and in the CMS program of testing cameras you can also leave eventually installed on one or more PCs on the network for direct visualization and control of the camera without going NVR. It also lets you save videos in the coming local PC acting as a backup recording in addition NVR.

## with browser access

Once properly set the network parameters, you can make the first access to the camera using the IE browser. Do not use other browsers like Edge, Chrome etc. they are not supported.

### ENABLE PERFORMANCE OF ACTIVEX

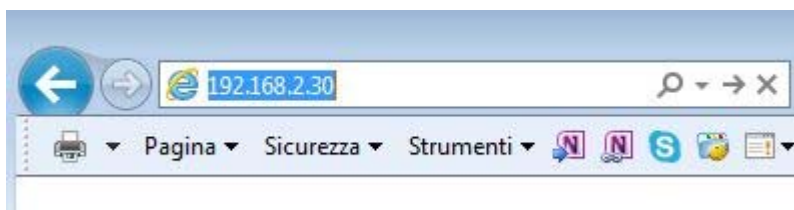
Internet Explorer has security settings that may prevent the installation of the ActiveX component. Before making the connections necessary to enable the execution of ActiveX not marked as safe. In Internet Explorer, select TOOLS / INTERNET OPTIONS



In the folder PROTECTION choose the area of interest (Internet or local network) and click CUSTOM LEVEL. Enable all items for the download and execution of ActiveX especially those NOT marked as safe. E 'can set the items either ENABLE or ASK FOR CONFIRMATION. Finally, save and restart the browser.

### ENTER THE ADDRESS IN THE BROWSER

To access the camera using the browser, type in the address box, the IP address that you assigned. In the example below we perform a link on the internal network to the camera with IP address 192.168.2.30.



It is not necessary to specify the connection port since the cameras use factory port 80 which is the one usually used by browsers.

If for any reason you change the HTTP port on the camera settings, then the door to call then follow up the IP address will be necessary to specify in the browser. In this example we are calling the 192.168.2.30 IP on port 85.



### INSTALLING ACTIVEX

In order to make sure that the RJ series IP cameras are displayed on the browser you must install the ActiveX components. If you login without installing activeX you can not see the video.

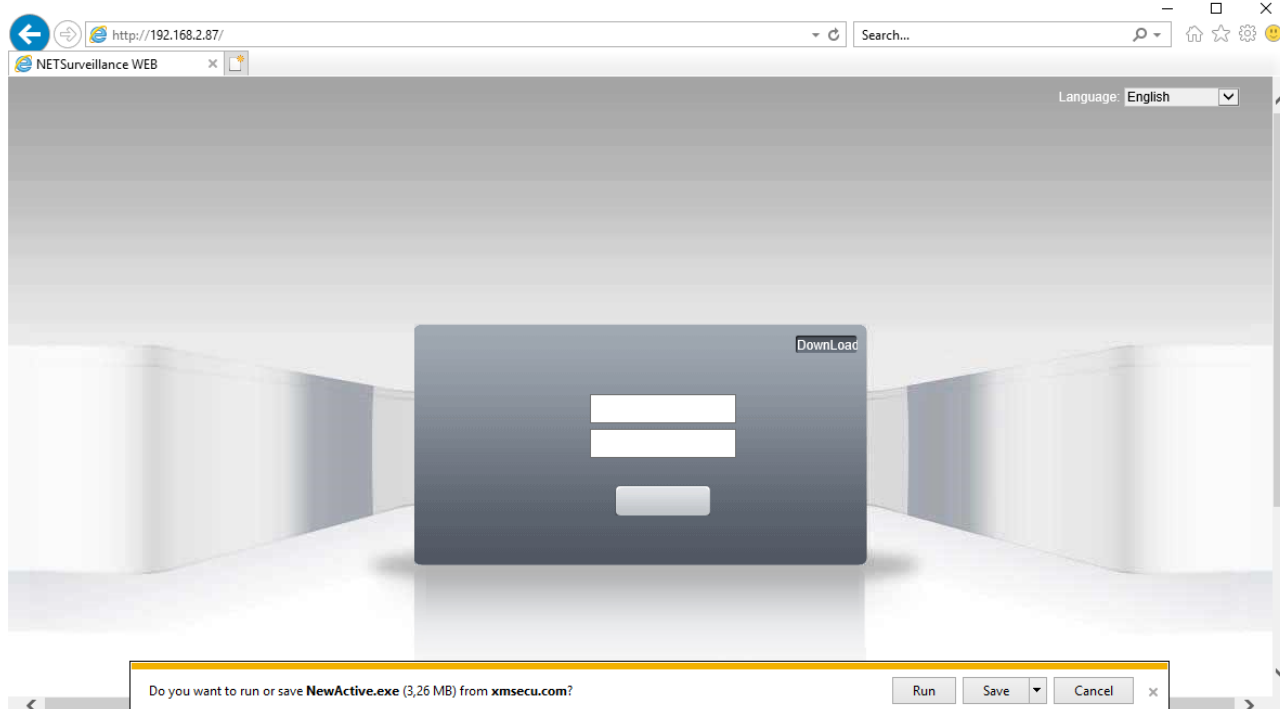
On first access you make, you must click the link in the login window FILE

# INSTALLATION MANUAL

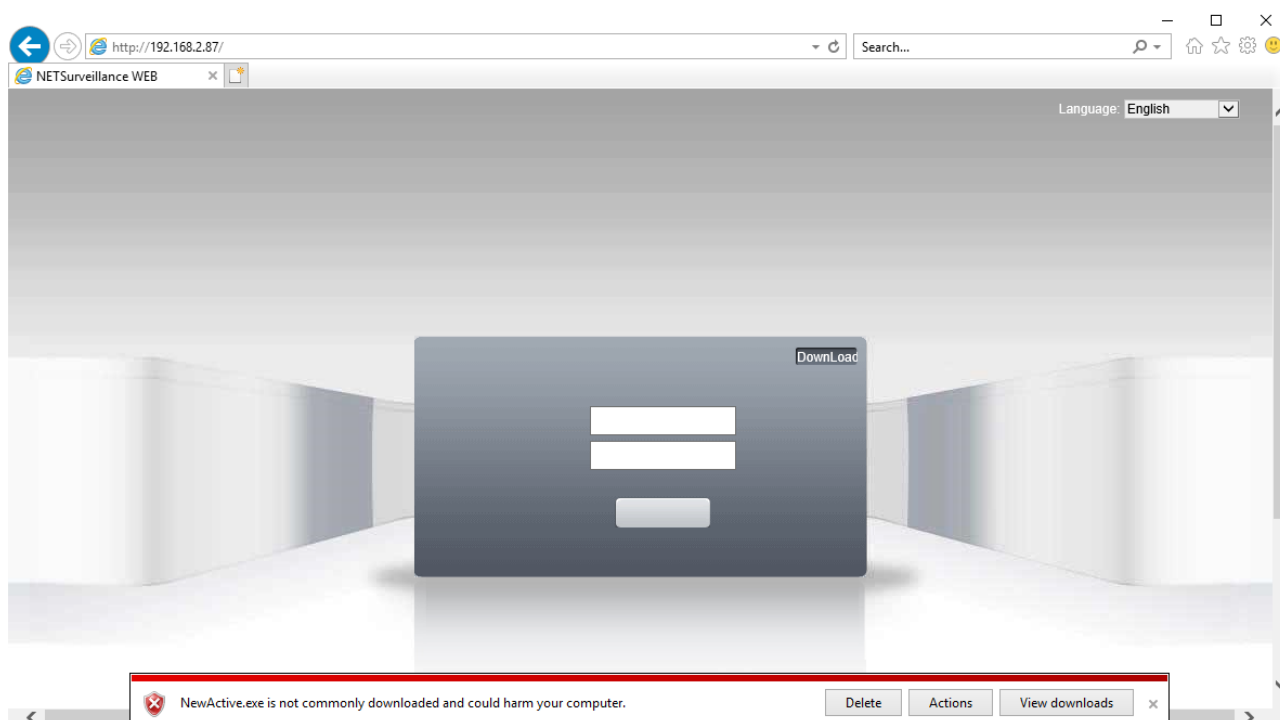
## IP CAMERAS SPEED DOME RJ-SDM18-5



Page: 21



Below window appears that lets you choose between PERFORM and the SAVE program. Either option can work.



# INSTALLATION MANUAL

## IP CAMERAS SPEED DOME RJ-SDM18-5



Page: 22

---

You might receive a message that warns of the dangers of the file. Click on "Actions" and in any case proceed with the installation.

Just remember to close your browser before you start the installation.

Always click NEXT until after installation.

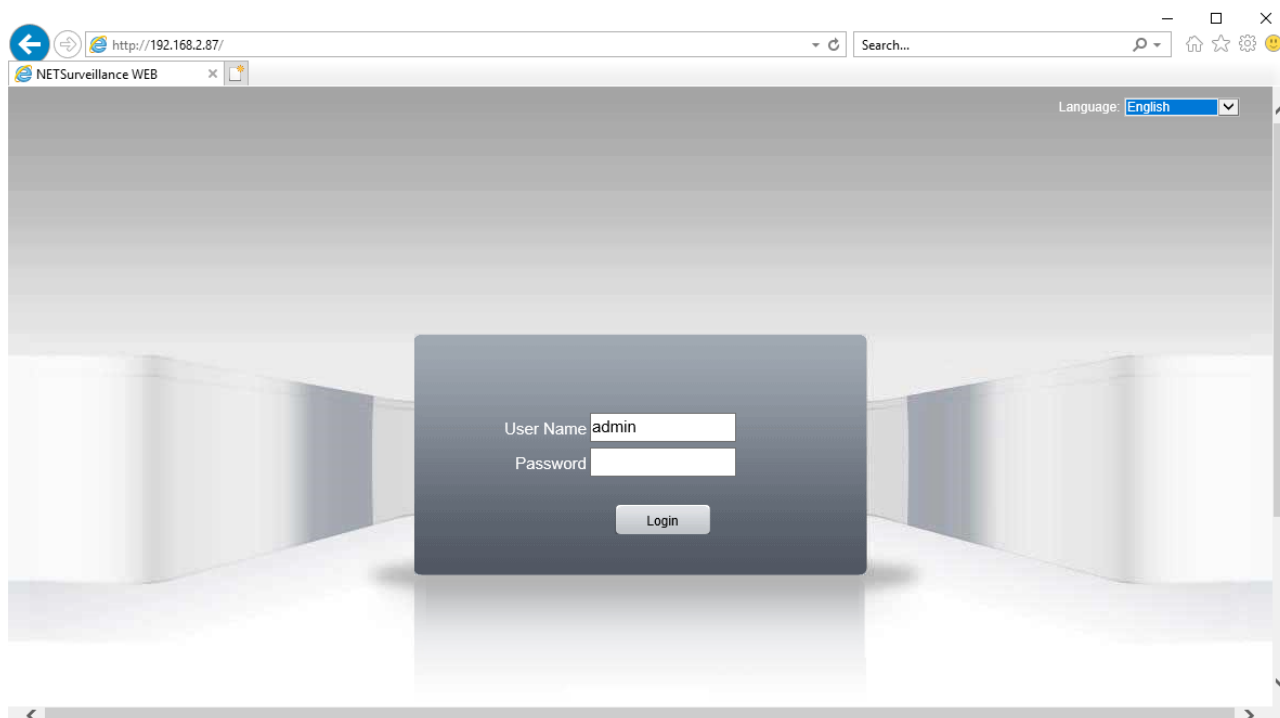
From this moment on, the plugin installed and will not have to do this operation on this computer.

## LOG-IN

The data of the RJ cameras factory passwords are:

**USERNAME: admin**

**PASSWORD:**



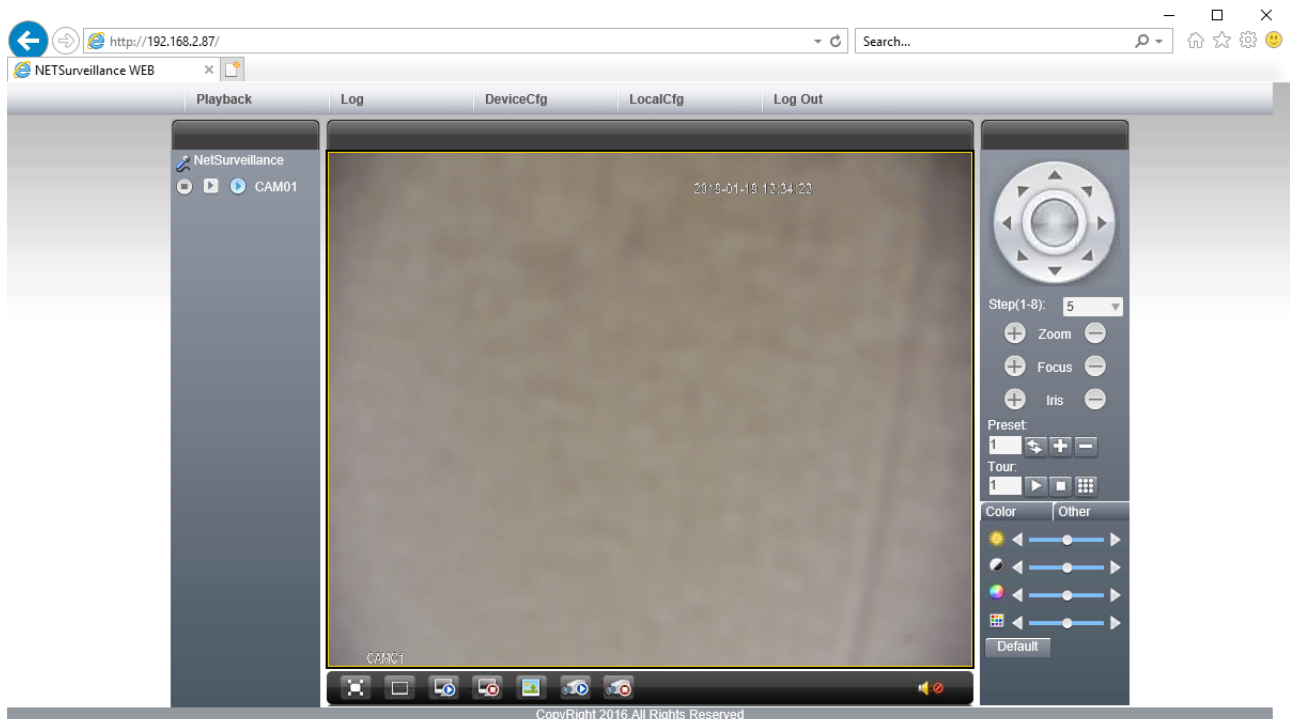
This manual refers to the English language, but you can choose a different language in the box at the top right. Enter the credentials above in red and click on the "Login" button to access the main camera screen.

# INSTALLATION MANUAL

## IP CAMERAS SPEED DOME RJ-SDM18-5



Page: 23



The options in the browser window are described in detail later in this manual.

## Login with ONVIF NVR

The RJ series IP cameras are cameras provided "NAKED", that is not able to independently record to SD card or NAS.

There are also accompanied by recording programs on a PC but only a configuration and test software tool.



These cameras must be connected to a network video recorder (NVR) or external recording software.

To do this you use the ONVIF standard, these cameras support pienamente. Per connect cameras to NVR or software ONVIF refer to the recording equipment manuals. As a rule, NVR recognize the communication parameters to communicate with the cameras automatically.

These cameras use the factory the 8899 port to communicate with ONVIF devices.



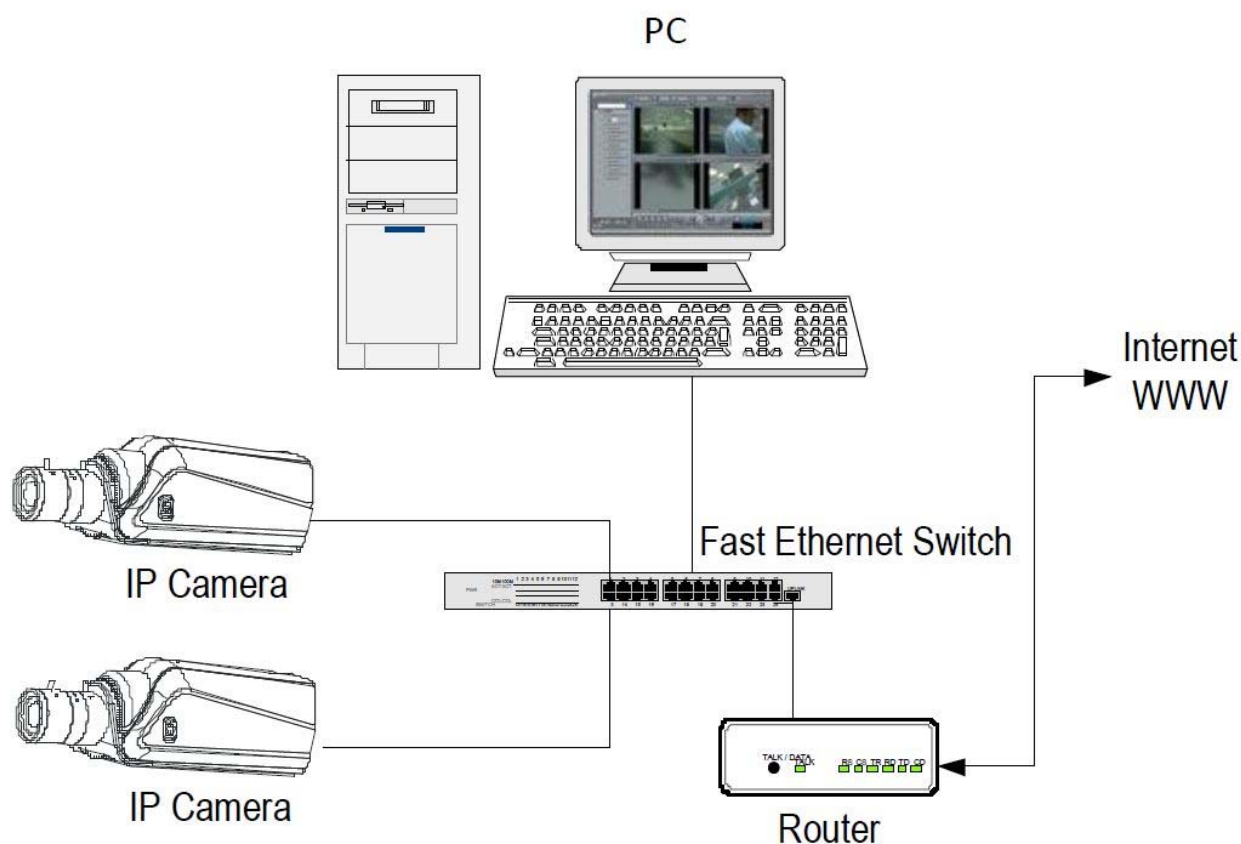
## from web access router

The link to "Naked" cameras over the Internet as a rule is not made by calling individual cameras but by connecting all NVR. Per this type of connection is necessary to refer to the manual of NVR.

E', however, can also connect to the web directly to the cameras with the Internet Explorer browser. To do this you need to make a configuration inside the router following the directions in this chapter where we explain the mapping of the communication ports.

### MAPPING WITH WEB ACCESS DOORS ROUTER

An installation of IP cameras is often placed inside a LAN connected to the Internet via a router as in the following scheme





If we use for viewing the cameras internal PC to the network, the addresses of the cameras (usually the 192.168.XXX.XXX type) are directly accessible. If you wish to connect via the Internet using a PC placed elsewhere, the internal network addresses will no longer be reached directly, because the only IP address visible from the web will be what our router will by its WAN side that is towards the outside world Internet. This address is assigned by the provider (ISP). And 'advisable to get from the provider a fixed address each time you connect. If there is a chance you need to use DDNS services (see assembly manual) .There is, however, simply type in the browser the IP address of the router wan side in order to connect the cameras. The router acts as a filter and drops every external call that a call from within the network is not paid before. In order to connect the cameras it is therefore necessary to insert inside the router ports of directing instructions which, depending on the router manufacturers are called NAT, PORT FORWARDING, PORT MAPPING etc.

In practice, access the router configuration and insert instructions so that it directs the external incoming calls, to the internal IP address of the telecamere. Ovviamente directing is only performed for the communication ports that are used by the cameras and that will be detailed below.

The communication ports used by RJ version C Series cameras are as follows:

- **HTTP PORT:** Default 80. The cameras use this port to communicate with browsers like IE. Browsers such as Internet Explorer use the factory port 80 for communication. For example, if we type in the browser address bar: `http://212.12.34.201` will be called the IP address 212.12.34.201 port 80.  
If in the configuration of the camera is set to a different HTTP port (eg. 81, 82, etc.) needs to be clarified in the browser which port to use for the call after pointing the address with ":" as the separation. If, for example. `http://212.12.34.201:81` we type will be called the IP address 212.12.34.201 port 81.
- **DOOR MEDIA:** By default 34567. E 'used by the camera for sending video
- **ONVIF DOOR:** By default 8899. And 'the port used by the cameras for dialogue with NVR onvif. This leads, in some models can not be changed. Set the 8899 nell'NVR port to charge the camera.



If behind the router counts more than one camera and you want to reach them individually from the outside you must be assigned to each of them a different http port. For example 80,81,82 doors etc.

In the NAT router settings you will have the direction of each door towards the inside address of the own camera.

Note that many routers require that each directing NAT is also combined with a rule in the firewall section that determines the opening of the affected port. Consult your router's manual for details on how to program the port mapping

Remember that web access to IP cameras in this range is much easier if done through the NVR, why the information provided in this chapter are present only for informative purposes for particular applications.



## Mobile APP

These naked cameras are controlled via NVR with its app. If for some reason you wanted access to cellular directly to the camera you can do with the app XMEYE

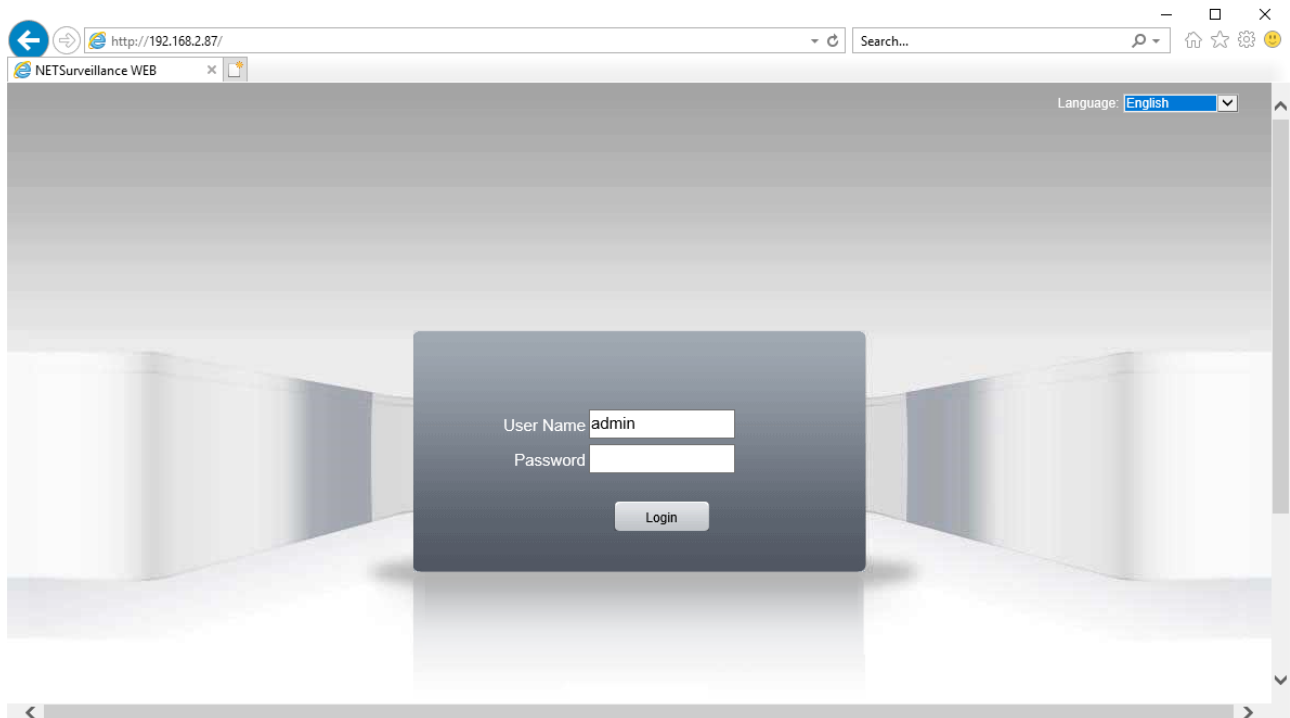


## Browser - LIVE Controls

In previous pages we explained how to access the cameras with your PC using the Internet browser.

If you've never run before have access to the browser to your camera should resume the manual and follow the instructions above to connect successfully.

This section of the manual start from the login window to enter user name and password for access to the admin / factory.

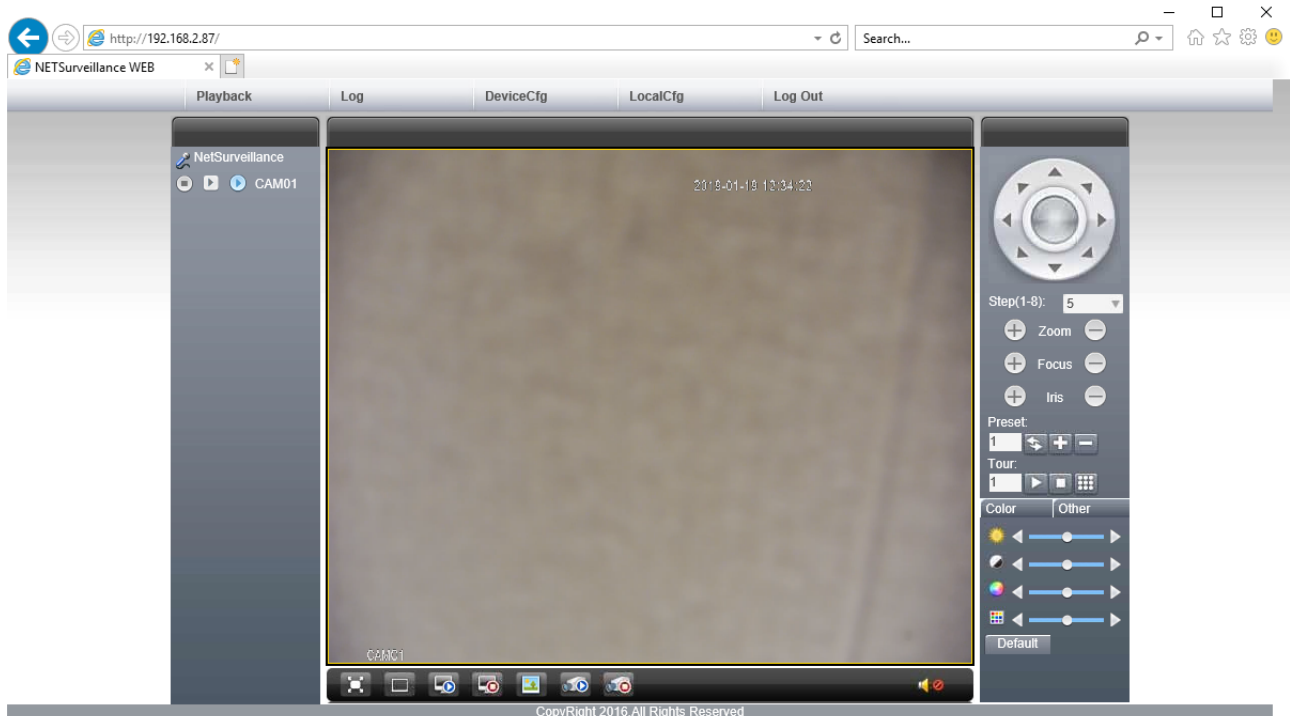


# INSTALLATION MANUAL

## IP CAMERAS SPEED DOME RJ-SDM18-5



Page: 30



### PULSANTIERA LIVE

As you watch the live camera image you have available some places below the image control buttons.



1 2 3 4 5 6 7

8

**1 - FULL VIEW** - Allows you to view full screen playing the Live image

**2 - VIEW 1** - Not used on this model

**3 - CONNECT TO VIDEO** - By pressing this button connects you to the live video of camera

**4 - DISCONNECT ALL VIDEO** - By pressing this button you disconnect from the live video transmitted from the camera, so the window which was playing the video now appears gray.

**5 - SNAPSHOT** - Allows you to capture a frame of video in live play.

**6 - CHANNEL ALL RECORD** - Pressing this button starts recording of live video.

**7 - CLOSE TO RECORD** - Pressing this button stops the recording of the live video.

**8 - AUDIO** - Not used on this model

### PTZ CONTROL

# INSTALLATION MANUAL

## IP CAMERAS SPEED DOME RJ-SDM18-5



Page: 32

---



In this window you manually control the camera movements, automatic movement and image settings.

## PTZ CONTROL MANUAL



The camera's movement is manually controlled with directional arrows.



# INSTALLATION MANUAL

## IP CAMERAS SPEED DOME RJ-SDM18-5



Page: 33

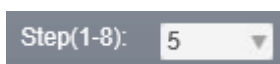
---

The middle button in the middle of the arrows opens the internal menu of the camera (see below).

Under the navigation arrows are the lens control buttons, in the order (from top to bottom): ZOOM, FOCUS and IRIS. Of these parameters, the zoom is always controlled while FOCUS and IRIS can not be controlled if the camera settings provide automatic capabilities.



Under the arrows is an option



with which it is possible to adjust the reaction rate of the camera. If you choose the step 1, the camera will rotate more slowly, but if you choose the step 8, the camera will rotate faster.

With COLOR section you can alter the picture adjustments



The adjustments are, in order from top to bottom:

BRIGHTNESS (BRIGHTNESS ')

CONTRAST (CONTRAST)

Saturation (Saturation)

HUE (HUE ')

In the OTHER you can access more options

# INSTALLATION MANUAL

## IP CAMERAS SPEED DOME RJ-SDM18-5



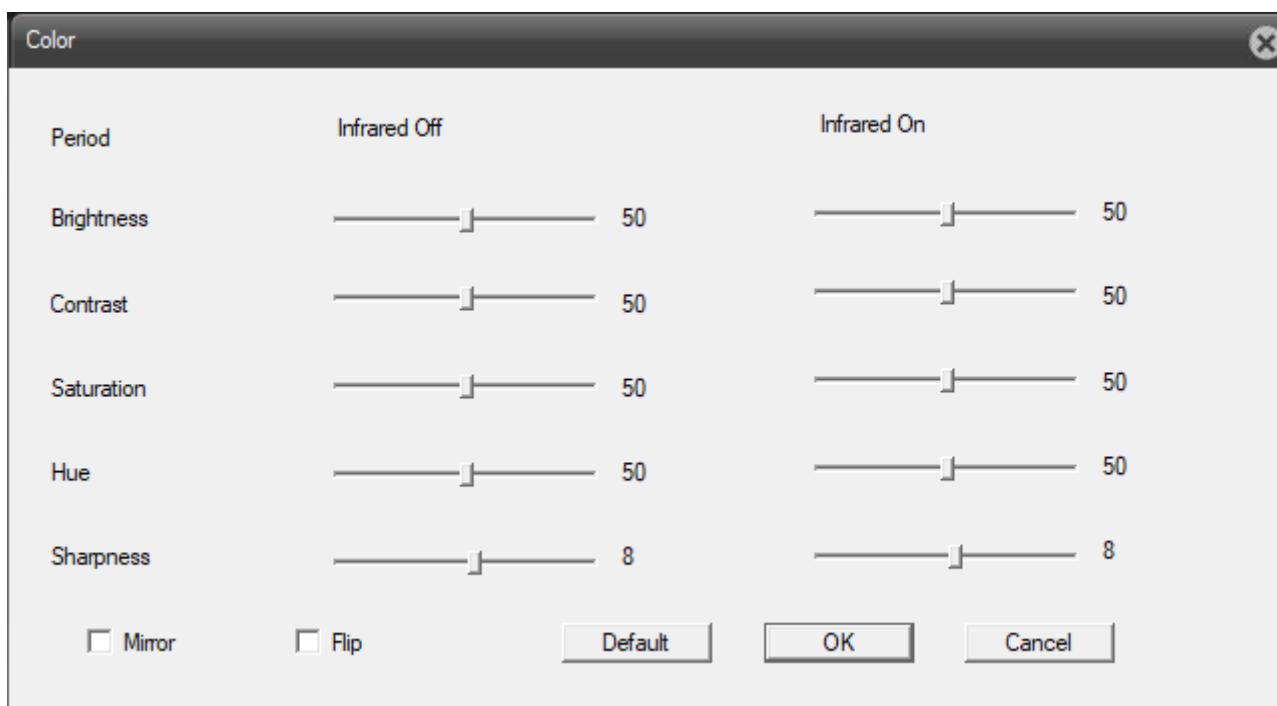
Page: 34



REBOOT - Reboots the camera

RATIO - Changing the height ratio - width. Press once to change, press again to return to the original format

COLOR - opens the following image adjustment window



MIRROR - Horizontal flip the image

FLIP - Vertical flip the image, which is useful if the camera is installed upside down

SHARPNESS - Adjusts the sharpness of the image

## AUTOMATIC MOVEMENTS


Like all speed dome cameras, even the RJ series can perform preconfigured automatic movements: PRESET, IDLE, TOUR / PATROL and PATTERN

### PRESET

The presets, commonly known as PRESET, are preset camera positions characterized by a precise value of X / Y coordinates, zoom and focus. You can easily call if necessary. You can define up to 255 presets.

You can define a preset 1) from the browser interface in the right bar to the right, or 2) the inside of the camera menu.



- 1) To add a preset in this way, place the camera in the position desired zoom and focus, then enter the preset number you want to save on the + button. If you want to recall a preset, enter the number of the desired preset and press the button . To delete a preset, enter the preset number you want to remove and press the button -.

- 2) To add a preset in this way, place the camera in the position desired zoom and focus, and get access to the internal camera menu. Enter then in the SPECIAL FUNCTIONS section, and then PRESET (if you do not know how to read in paragraph MENU



'INTERNAL'). Select the preset number with the arrow keys UP and DOWN and confirmation. Then select and SET POSITION with the same arrows and press ZOOM - to confirm. You can delete a Preset choosing the corresponding number and selecting OF CURRENT PRESET section; you can delete all presets by selecting the DEL ALL PRESETS voice.





To do so enter the SPECIAL FUNCTIONS section, then under PRESET position the camera, choose the preset number and click the SET button.

### TOUR


As TOUR, also called PATROL or CRUISE, it means the automatic movement of the camera between presets with a residence time on each of them programmable. This camera can handle up to 4 sequences TOUR recallable at pleasure.


Before setting up a tour sequence you must have set all presets that interest us as explained in the previous chapter.

You can set up a tour 1) interface on the right sidebar, or 2) the inside of the camera menu.

- 1)  To add a tour in this way enter the tour number and press icon . In the window that opens add presets you want them to do the tour. To recall a tour, type the number of the desired tour and press . To stop a tour, enter the tour number to stop and hit the button .

- 2) To add a tour this way, access to the internal menu of the camera as explained in paragraph MENU 'INTERNAL'. Then enter the SPECIAL FUNCTION section and subsequently in the PATROL section. You can select the patrol number using the arrow

 keys UP and DOWN. To attribute to patrol the various presets and define the time spent on each, enters the section September PATROL. On entry DWELL TIME awards directional arrow RIGHT to select it and then define the dwell time of each preset by using the arrow keys UP and DOWN. After choosing the desired time, press LEFT directional arrow to confirm. To add a preset to patrol, go to the desired preset using the arrow keys UP and DOWN, and press the button - the ZOOM section to add

it . Once you have added the desired preset awards directional arrow LEFT to return to the section PATROL. Choosing the voice RUN PATROL can activate the patrol selected. Choosing THE PATROL item you can delete the selected patrol.


## PATTERN

As PATTERN, or TRACK, is meant a sequence of movements of the camera registered user and callable at will.

This camera can handle up to 8 recordings TRACK recalled at will.

To record a pattern access the camera internal menu and navigate to the section SPECIAL FUNCTIONS> PATTERN FUNCTION. Select the number of pattern sequence you want to edit. To

do that press the button - the section ZOOM  on voice PATTERN NO, then

use the directional arrows UP and DOWN  and press the button again - the ZOOM section to confirm. Bring the camera to the position where you want to begin the pattern and press the button - the ZOOM section on the item EDIT PATTERN. Run Now all the movements that want to be included in the sequence. When you have finished the sequence press the + button to

save the IRIS section



To run the sequence you choose the voice RUN PATTERN.

The camera automatically stops the movement in the event of another command receipt.

To delete a certain pattern, after selecting the number, choose THE PATTERN voice.

## IDLE

The IDLE function is the action that is executed automatically by the camera after a certain period of absence of commands.

To modify access to the internal menu of the camera and browse the section SPECIAL FUNCTION> FUNCTION IDLE. To change the action IDLE press the button - the section

ZOOM




CALL IDLE on the item, then use the arrow keys UP and DOWN



to choose the desired action and press the button again - the ZOOM section to confirm.

Choose the voice off in the Options menu to turn off IDLE function.

To change the idle time before the action is performed IDLE press the button - the section

ZOOM  WAIT TIME on the item, then use the arrow keys UP and DOWN



to choose the desired amount of time and press the button again - the ZOOM section to confirm.

## Browser - Camera Menu



During the live camera view with the browser you can access a camera module configuration menu by calling preset 95



(If you do not know how to read the section PRESET)

or by pressing on the left half of the button in the center of the directional arrows



Using this main menu allows some room module settings to use when you have no way to access the camera configuration via a browser (see below)



To navigate through the menu items using the arrow keys UP and DOWN.

To select an item, press the button - the section ZOOM



To modify the parameters using the directional arrows UP and DOWN.

To go back press the + button or the ZOOM section directional arrow LEFT.

To exit the menu, once in the main menu page, double tap the + section ZOOM button.

## Browser - Configuration

Using your Internet browser, you can configure the operation of the camera options.

Click the DEVICE CFG tab to access the configuration.





1 2 3 4 5

### 1 - RECORD

This model does not support recording to internal memory

ALARM -

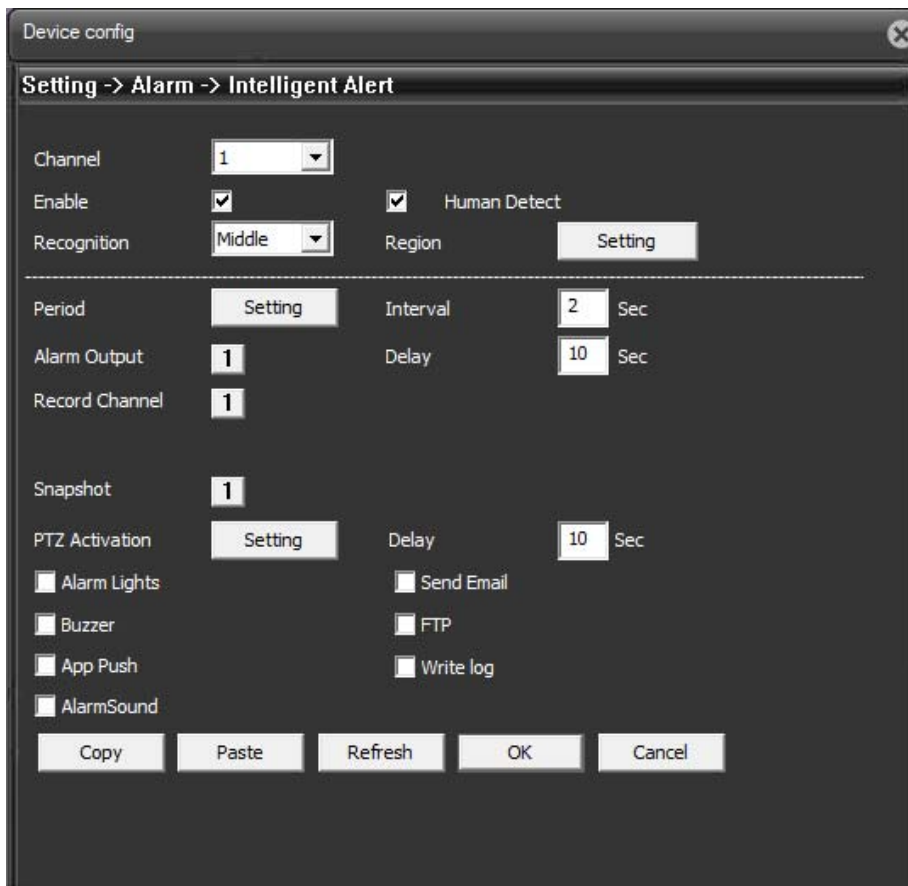
### 2 - ALARM

It Contains 6 subfolders:

- A) INTELLIGENT ALERT
- B) BLIND VIDEO



- C) VIDEO LOSS
- D) ALARM INPUT
- E) ALARM OUTPUT
- F) ABNORMAL



The screenshot shows a 'Device config' window with a title bar and a close button. The main content area is titled 'Setting -> Alarm -> Intelligent Alert'. It contains various settings for motion detection:

- Channel:** A dropdown menu set to '1'.
- Enable:** A checked checkbox.
- Human Detect:** A checked checkbox.
- Recognition:** A dropdown menu set to 'Middle'.
- Region:** A button labeled 'Setting'.
- Period:** A button labeled 'Setting'.
- Interval:** A numeric input set to '2' with 'Sec' next to it.
- Alarm Output:** A numeric input set to '1'.
- Delay:** A numeric input set to '10' with 'Sec' next to it.
- Record Channel:** A numeric input set to '1'.
- Snapshot:** A numeric input set to '1'.
- PTZ Activation:** A button labeled 'Setting'.
- Delay:** A numeric input set to '10' with 'Sec' next to it.
- Alarm Lights:** An unchecked checkbox.
- Send Email:** An unchecked checkbox.
- Buzzer:** An unchecked checkbox.
- FTP:** An unchecked checkbox.
- App Push:** An unchecked checkbox.
- Write log:** An unchecked checkbox.
- AlarmSound:** An unchecked checkbox.

At the bottom, there are five buttons: 'Copy', 'Paste', 'Refresh', 'OK', and 'Cancel'.

TO -

Here you can change the motion detection settings

ENABLE - Enable motion detection

HUMAN DETECT - Activate the discernment of human movement, you prevent false alarms

RECOGNITION - Sets the sensitivity of motion detection (from very low to very high)

REGION - Allows you to choose a portion of the frame in which to apply the motion detection

PERIOD - Select the times when you want to be motion detection Active

ALARM RECORD OUTPUT DELAY CHANNEL SNAPSHOT - Not used

# INSTALLATION MANUAL

## IP CAMERAS SPEED DOME RJ-SDM18-5



Page: 42

APP PUSH - not enabled on this model

SOUND ALARM - not enabled on this model

BUZZER - not enabled on this model

ALARM LIGHTS - not enabled on this model

SEND EMAIL - Enables sending emails

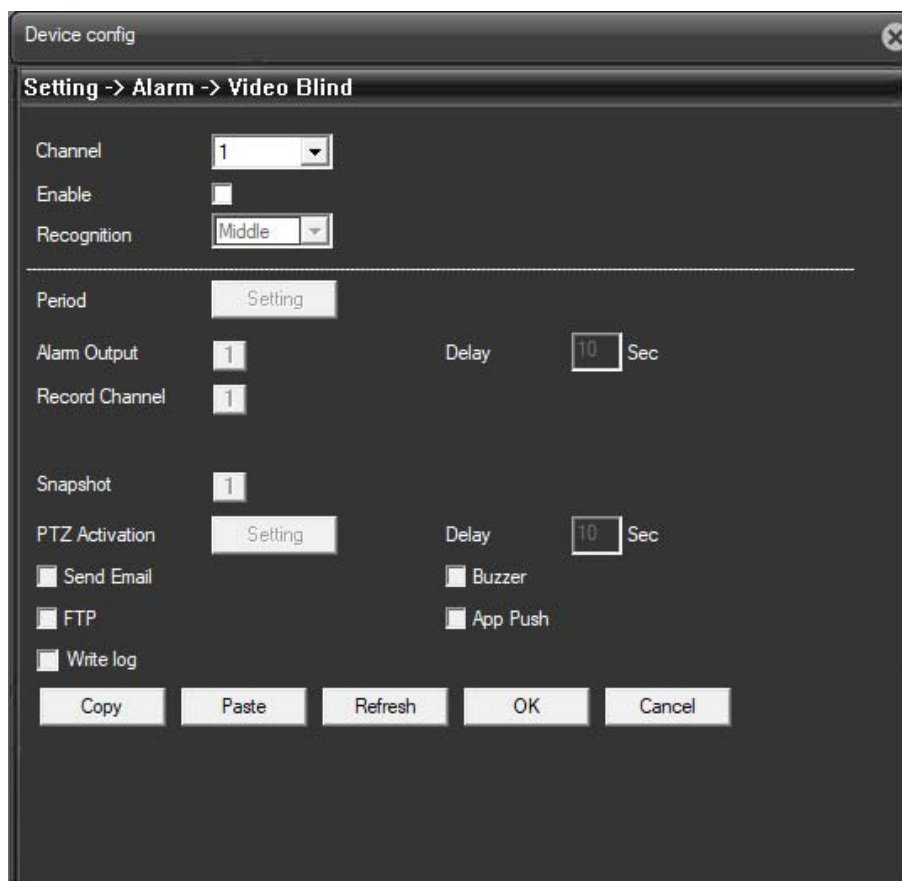
INTERVAL - The send frequency in milliseconds

FTP - Enable sending via FTP to the server set in the Network section

SEND EMAIL - Enables sending via email to the recipients set in the Network section

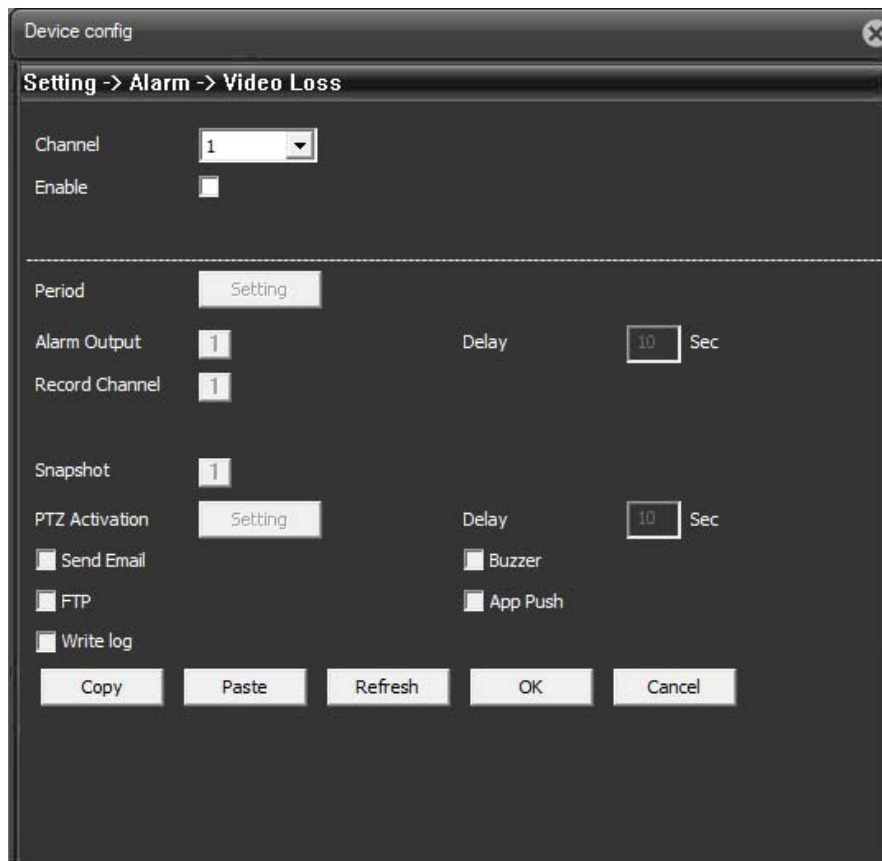
WRITE LOG - Writes the event to the device memory

PTZ ACTIVATION - Move the camera due to the alarm



B -

Set the detection of the camera masking. For options See A



Device config

Setting -> Alarm -> Video Loss

Channel: 1

Enable: ☐

Period: Setting

Alarm Output: 1 Delay: 10 Sec

Record Channel: 1

Snapshot: 1

PTZ Activation: Setting Delay: 10 Sec

☐ Send Email ☐ Buzzer

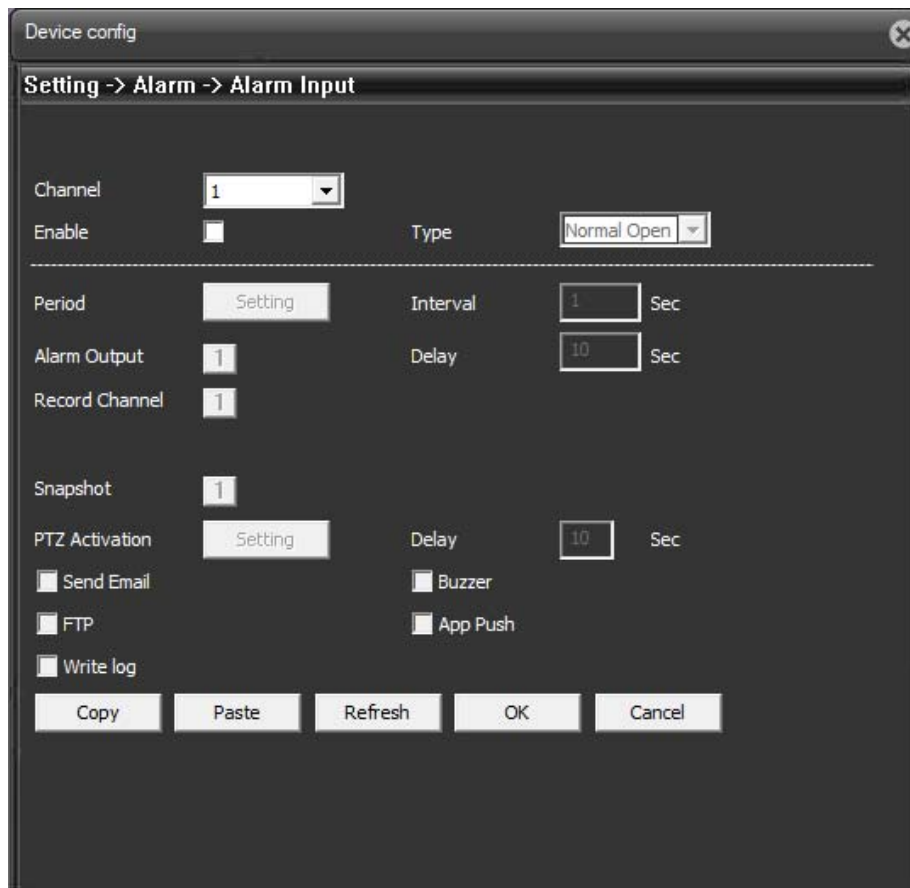
☐ FTP ☐ App Push

☐ Write log

Copy Paste Refresh OK Cancel

C -

Set rilevazione video loss. For options see A)



Device config

Setting -> Alarm -> Alarm Input

Channel: 1

Enable: ☐

Type: Normal Open

Period: Setting

Interval: 1 Sec

Alarm Output: 1

Delay: 10 Sec

Record Channel: 1

Snapshot: 1

PTZ Activation: Setting

Delay: 10 Sec

☐ Send Email

☐ Buzzer

☐ FTP

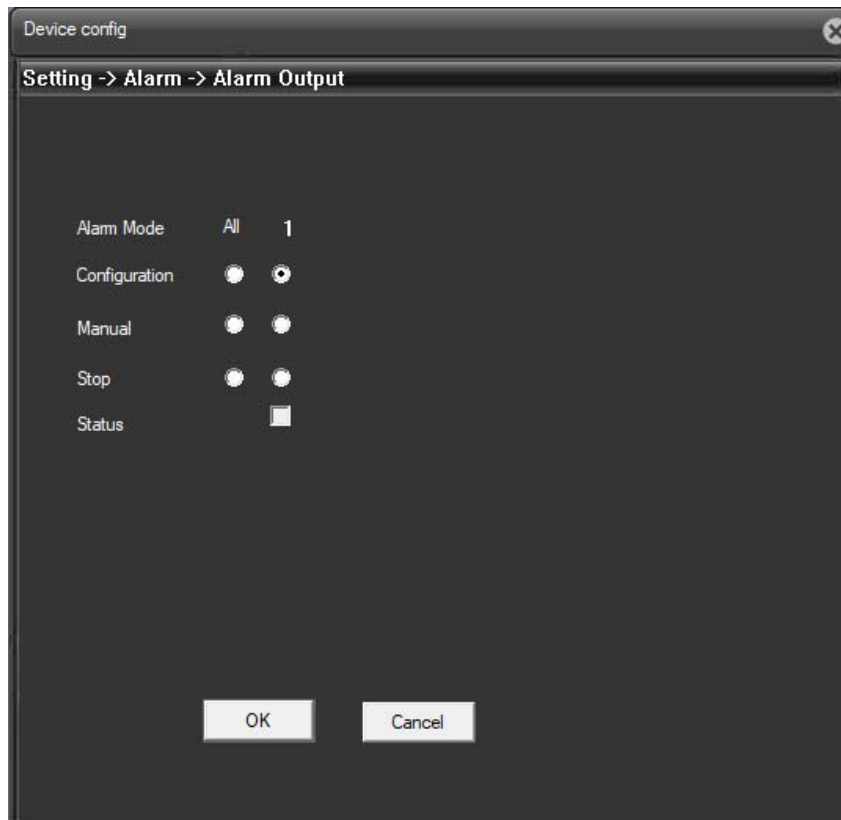
☐ App Push

☐ Write log

Copy Paste Refresh OK Cancel

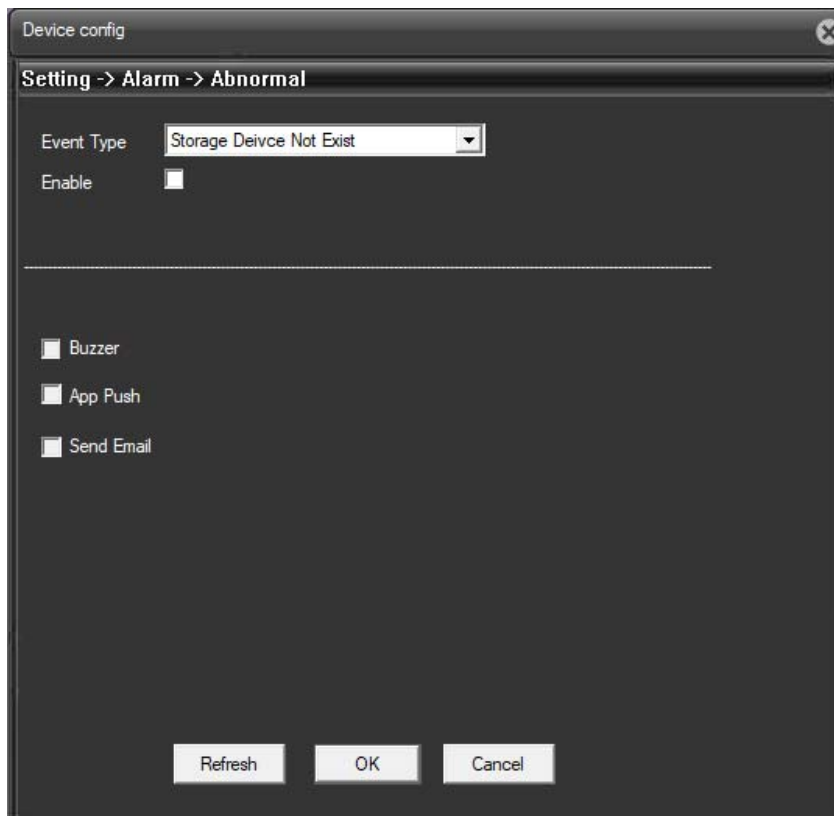
D -

Not used on this model



IS -

Not used on this model



F -

Here you can change the settings of abnormal events

EVENT TYPE - Select the abnormal event in the presence of what you want them to perform the following actions

ENABLE - Allows you to enable / disable this feature

BUZZER - Not available on this model

APP PUSH - not enabled on this model

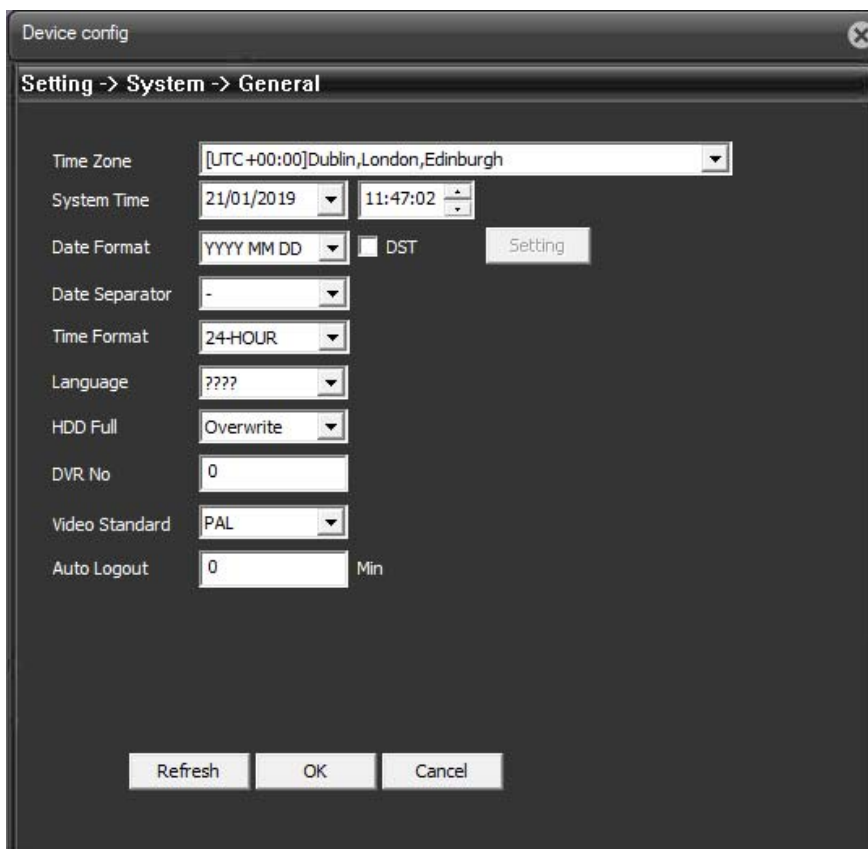
SEND EMAIL - Enables sending via email to the recipients set in the Network section

### 3 - SYSTEM

A) GENERAL

B) ENCODE

- C) NETWORK
- D) NET SERVICE
- E) GUI DISPLAY
- F) PTZ CONFIG
- G) RS232
- H) ROOM PARAM.



TO -

Here you can change system settings

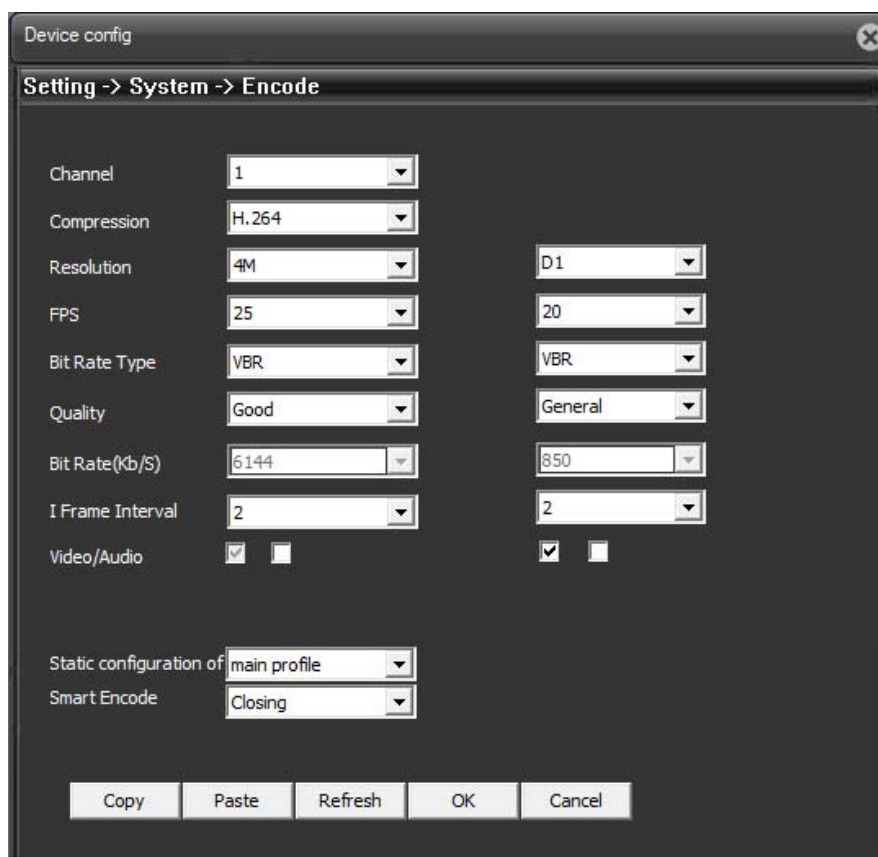
TIME ZONE - Select the reference time zone. For Italy GMT + 1

HDD FULL - What to do when the Hard Disk is full

DVR NO - Number of DVR

VIDEO STANDARD - Not used on these models

### AUTO LOGOUT -



**B -**

Here you can change the encoding settings of the image

COMPRESSION - Supported H264, H265 and MJPEG.

RESOLUTION - Image resolution

FPS - It 's the number of frames per second that make up the video stream (max. 25). Consider that 25 f / sec corresponds to the so-called real-time ie the television standard in which the human eye does not perceive the individual frames but a single uninterrupted sequence. Generally you can reduce this parameter up to 10/12 f / sec without perceiving large video fluidity differences and thus saving a lot of bandwidth. We recommend this reduction especially in the SUB STREAM.

BITRATE TYPE - This option It gives the possibility to choose between two different bandwidth management mode occupied: CONSTANT BIT RATE (CBR) and VARIABLE BIT RATE (VBR). In CBR mode, the camera maintains a constant bit rate and provides the highest video quality



made possible by this band. In the VBR mode instead of changing the bit rate camera in different operating conditions in order to maintain a constant video quality.

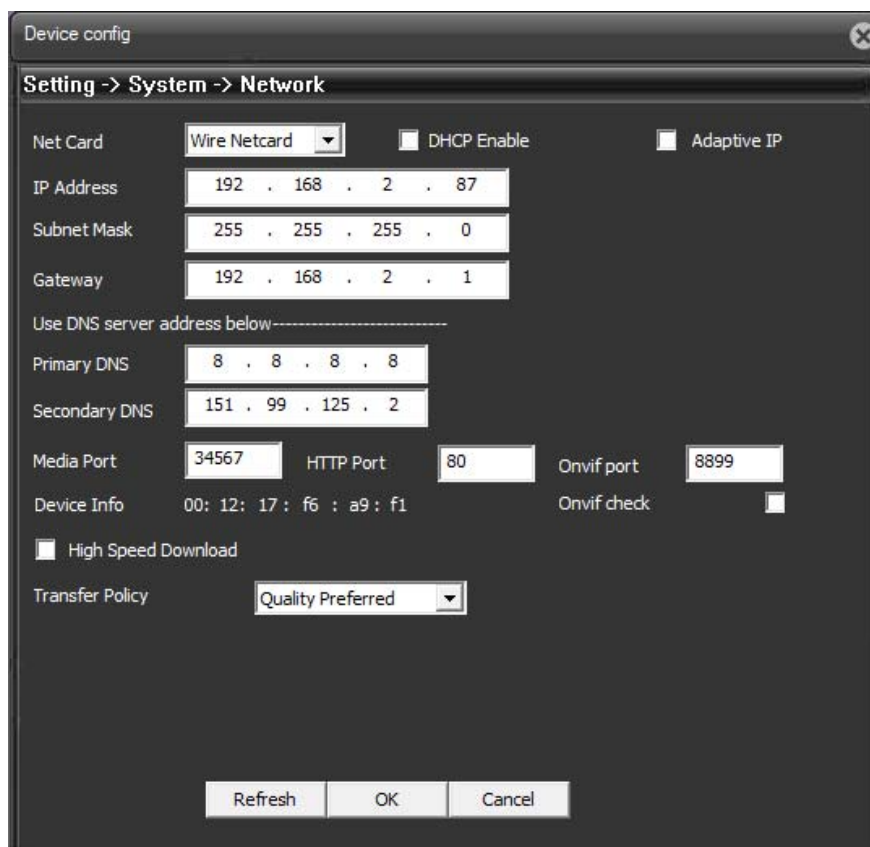
QUALITY - Sets the average video quality (High, Medium, Low). Better quality means less compression and more bandwidth occupied

BITRATE - And 'the occupation of maximum usable bandwidth from the camera in Kbit / sec

The FRAME INTERVAL - The interval between frames in video compression

AUDIO - Not used

SMART ENCODE - Not used



C -

Here you can change your network settings

DHCP ENABLE - The cameras support both manual IP address assignment is automatic assignment from a DHCP server on the network. The latter is typically not used because it could



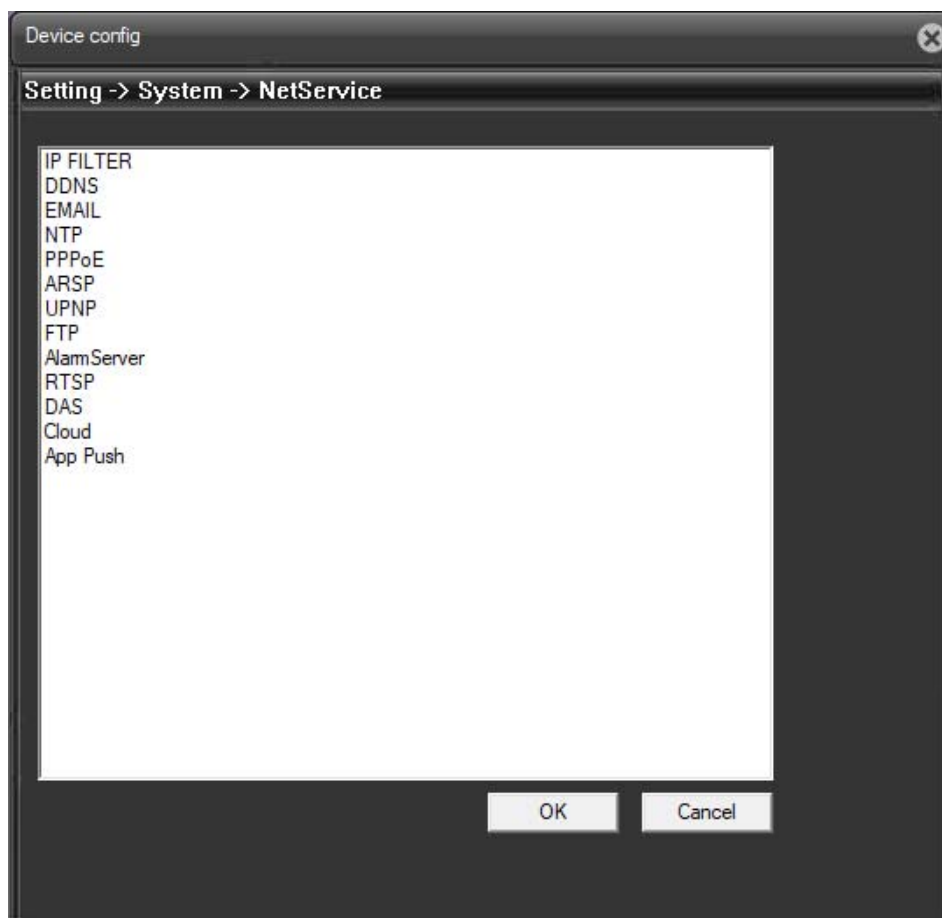
cause the change in the address of the time telecamera. La DHCP mode may be of help if you are uncertain about the camera to be assigned to the network configuration. You can start the camera in DHCP mode, so that it automatically takes the correct parameters, then exclude the DHCP and copy the parameters in the static configuration.

IP / SUBNET MASK / GATEWAY - Here you can enter the network settings manually. These are the classical parameters that allow the device to communicate with your network. Normally these parameters are assigned during the installation with the IPCSEARCH software as shown in the installation section. It 'also possible to modify them in this tab.

PRIMARY / SECONDARY DNS - And 'the DNS server address that allows the camera to interpret the web site addresses. You can use the Internet DNS provider (ISP) or other free network, such as those of google factory set.

ONVIF PORT - port for communication with ONVIF products (fixed value 8899)

DEVICE INFO - MAC address of the camera (unique identifier of the camera, not editable).



**D -**

Here you can enable / disable and customize various protocols and network services

PPPOE NETWORK - is used when the camera is connected directly to an ADSL modem that requires authentication with the pppoe protocol. It is a situation quite rare today, however in this folder you can enter authentication data.

NETWORK DDNS - manage with the camera connecting to a DDNS server that is used for the web link when you do not have static IP.

In Naked cameras it is extremely rare that you access the camera directly, without passing by 'NVR'. If you need access to particular applications through the Internet directly to the camera it is definitely advisable to have a fixed IP address so that you always know the exact address to connect. If you can get a static IP from your ISP, these cameras support services DDNS (Dynamic DNS) that continuously monitor the IP address of the camera to the Internet and allow you to compensate for the lack static IP. These services, available online, provide the user



with a domain name that you type in the client. The DDNS provider redirects communication to the IP address that the camera has at that moment.

NETWORK FTP - allows you to enter the FTP server data. The cameras can upload images to a website via FTP on a time basis. It is very used in applications webcam application. The sending photos activation is done in the EVENT folder that we will see later. Here you can set the mode of communication with the server.

FTP server - IP address of the FTP server

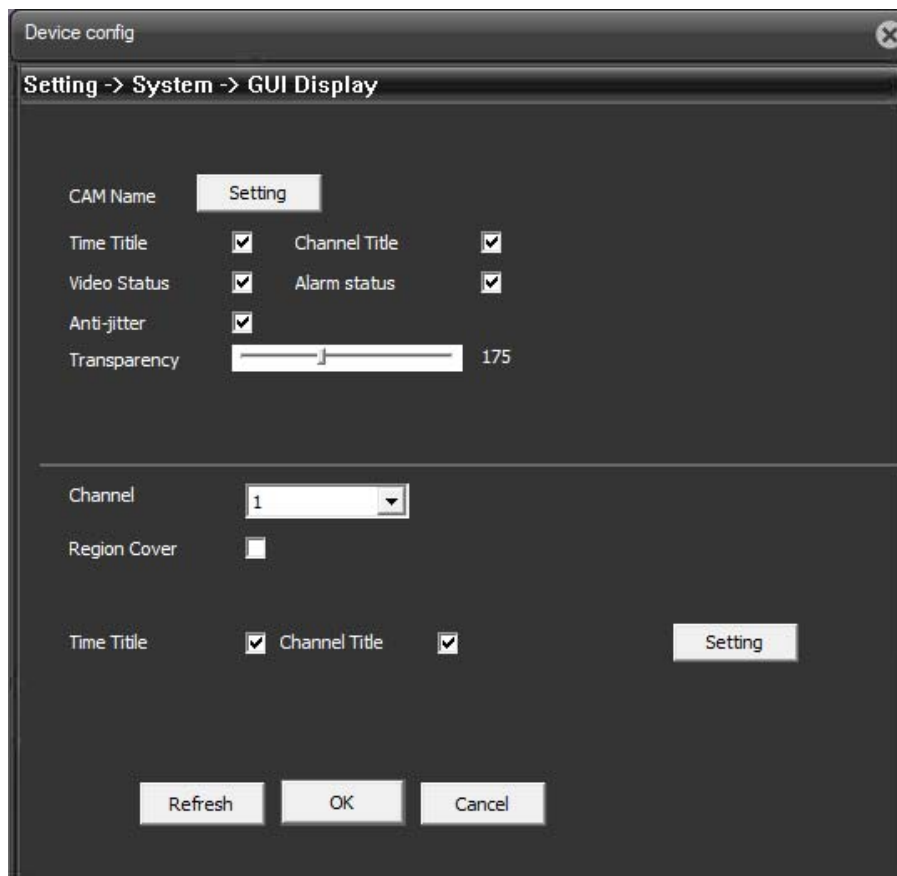
FTP PORT - The communication port, typically the 21

USER / PASSWORD - All the FTP servers require authentication to access it should be indicated here, otherwise select ANONYMOUS

DIR - Here is to display the camera about the folder to save the files to the FTP server. E 'can choose to save in the main ROOT directory or you can indicate a top-level folder or second level. Depending on this choice will enable the boxes to indicate the folders first and second level to use the FTP server.

EMAIL NETWORK - allows you to enter the SMTP server for sending emails. Cameras can send alarm EMAIL, although typically this function is commonly entrusted NVR. E 'can indicate the address of the SMTP mail server, port and authentication data to be used to access the SMTP server if it requires authentication. If the server uses SSL encryption, they must abilitarla. Si must also enter the email address to use as the sender (FROM ADDR) and up to 3 recipients (TO ADDR 1,2,3). You can also enable password authentication if the server is requesting.

UPNP NETWORK - allows you to enable the use of this protocol, through which the camera can be mapped to only the ports of the router to allow access from the Internet. It is necessary that the router supports this function and that it is permitted in its programming. This function is now rarely used because different network situations may render it ineffective. If you want to connect from the outside towards the camera we recommend the manual mapping of ports on the router or the use of an NVR with P2P function to prevent the mapping.



IS -

Here you can customize the graphical interface appearance

In the upper section regulates the overlays in the image.



	PTZ Device	RS485 Device
Channel	1	
Protocol	PELCOD	NONE
Address	1	1
Baudrate	9600	9600
Data Bits	8	8
Stop Bits	1	1
Parity	None	None

Refresh OK Cancel

F -

Not used on this model

# INSTALLATION MANUAL

## IP CAMERAS SPEED DOME RJ-SDM18-5



Page: 55



G -

Not used on this model



H -

Here you can configure the camera video parameters.

EXPOSURE MODE - Exhibition, opening shutter

DAY / NIGHT MODE - Day / Night Passage

GEAR CONTROL - Threshold of the day-night transition

AUTO IRIS - Not used

WHITE BALANCE - White balance

AE REFERENCE - Recommended 50

BLC - Back Light Compensation

DWDR - Wide dynamic range digital. It allows to improve the recovery when they are present in the image areas with different brightness.

AE SENSITIVITY - WDR Sensitivity





Defogging - Lights

AGC - Automatic control of guadagno

SLOW SHUTTER - Increases the brightness of ripresa reducing the frame rate

IR CUT - IR Filter Removal

DAYNTLEVEL / NIGHTNTLEVEL - Threshold night passing day

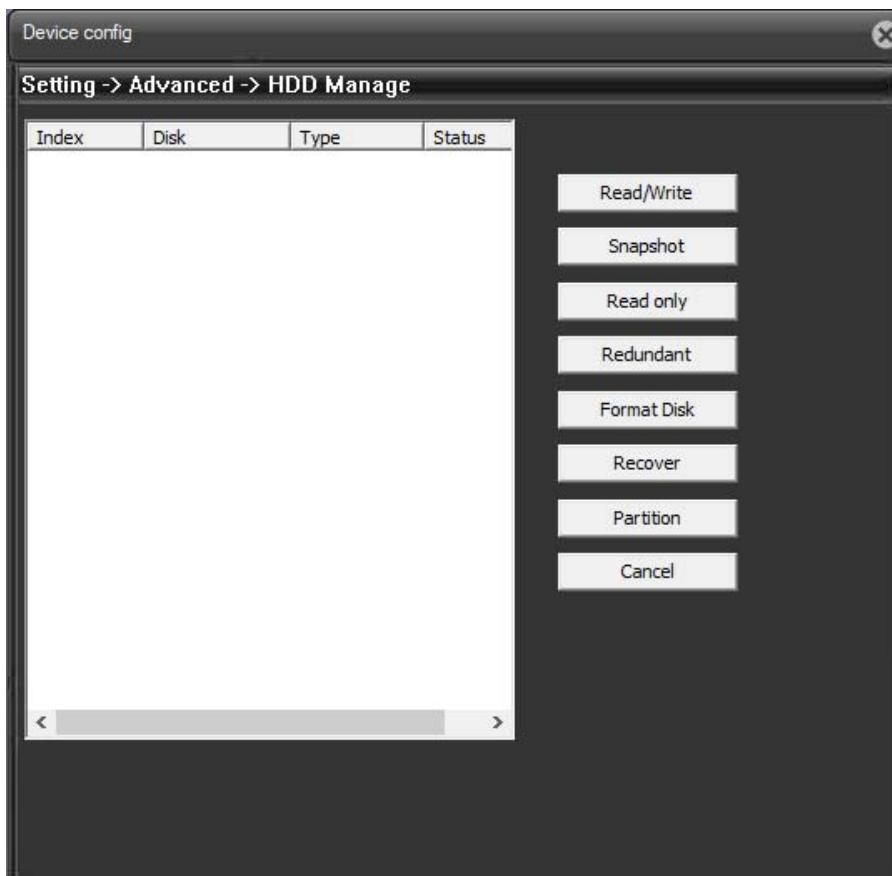
MIRROR - Horizontal flip the image. Useful when shooting under rear view.

FLIP - Vertical flip the image. Useful if the camera is installed upside down.

ROTATE - Rotate the image 90 and 270 °. Useful for abnormal mounting positions

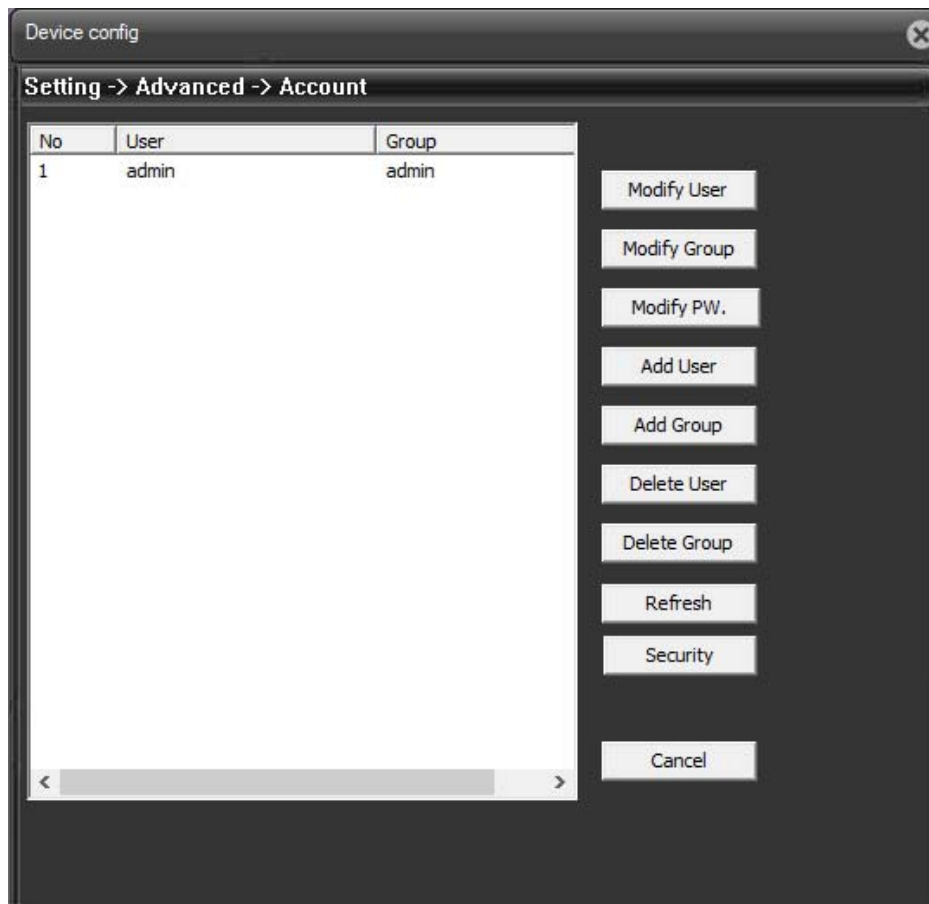
## 4 - ADVANCED

- A) HDD MANAGE
- B) ACCOUNT
- C) AUTO MAINTAIN
- D) DEFAULT
- E) IMPORT EXPORT
- F) REBOOT
- G) UPGRADE



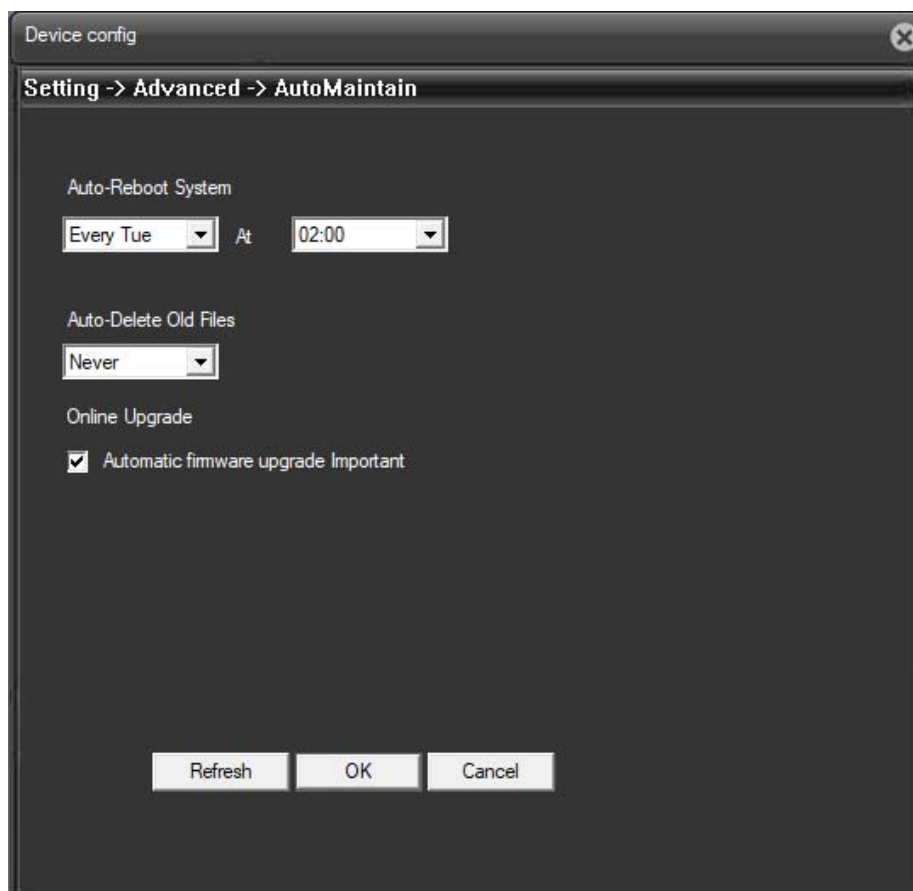
TO -

Not used on this model



**B -**

Here you can manage the accounts for the 'access to the camera

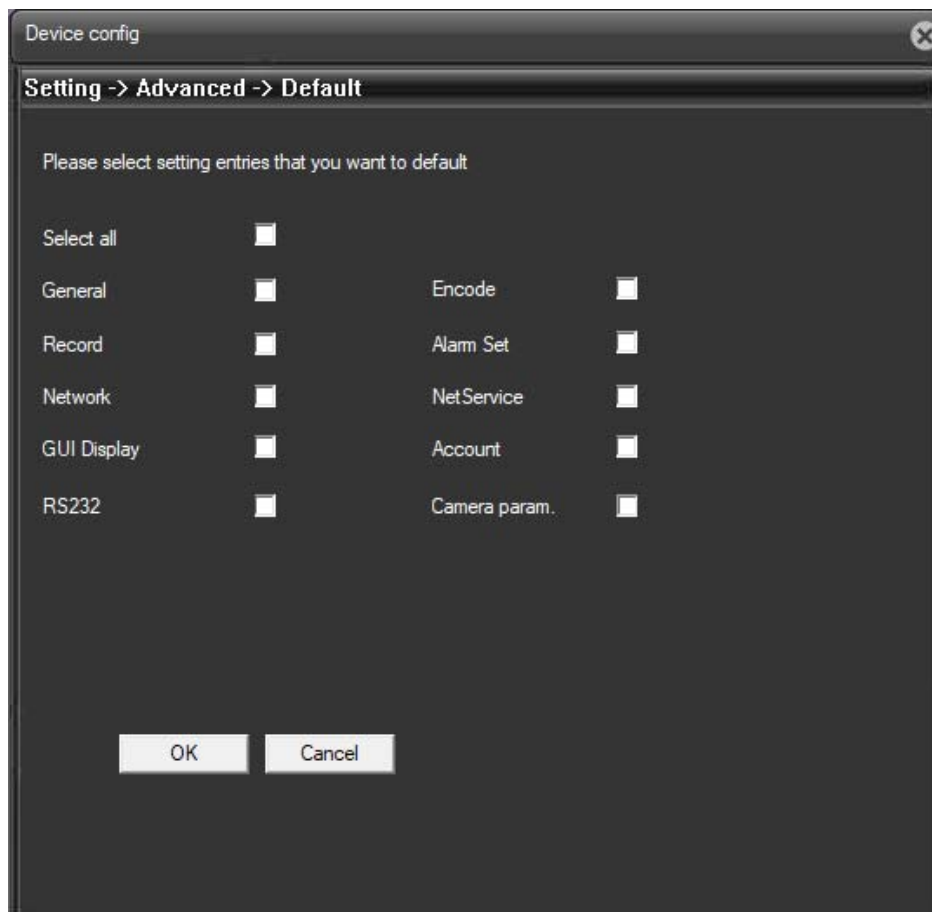


C -

Here you can change the camera's self-maintenance settings

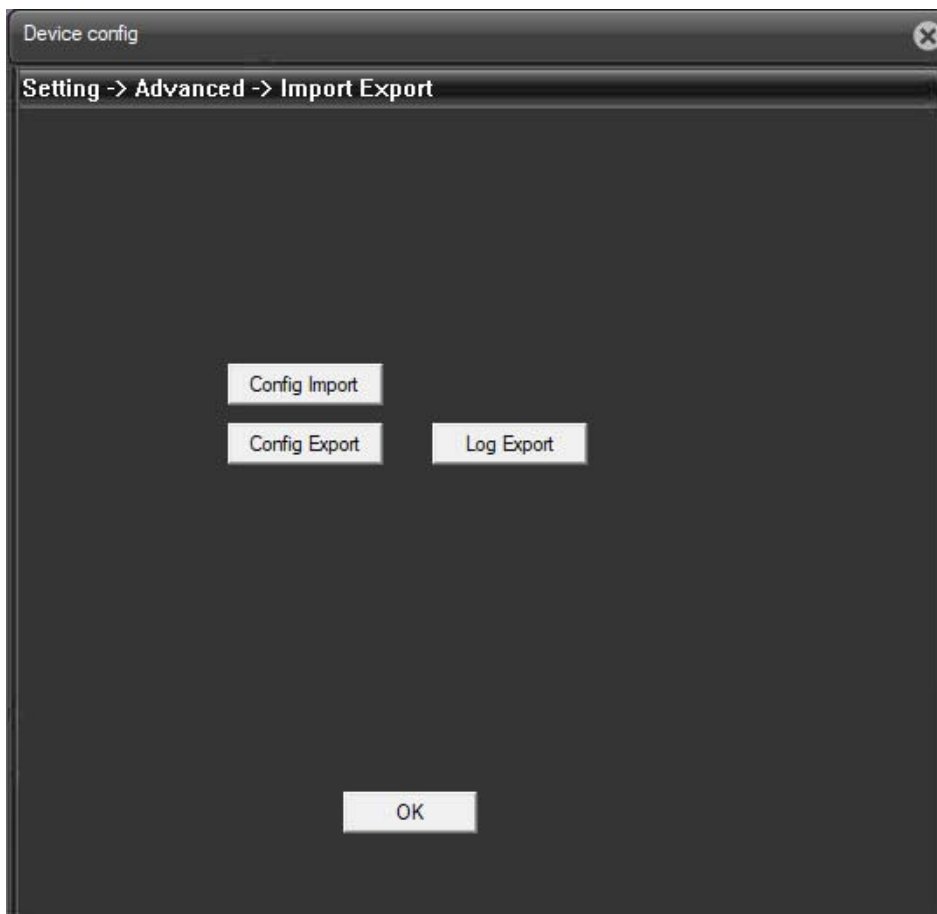
AutoReboot SYSTEM - Choose / day of the week and time in which the camera will reboot

AutoDelete OLD FILES - Not used on this model



D -

Here you can select the settings you want to restore to factory default values



**IS -**

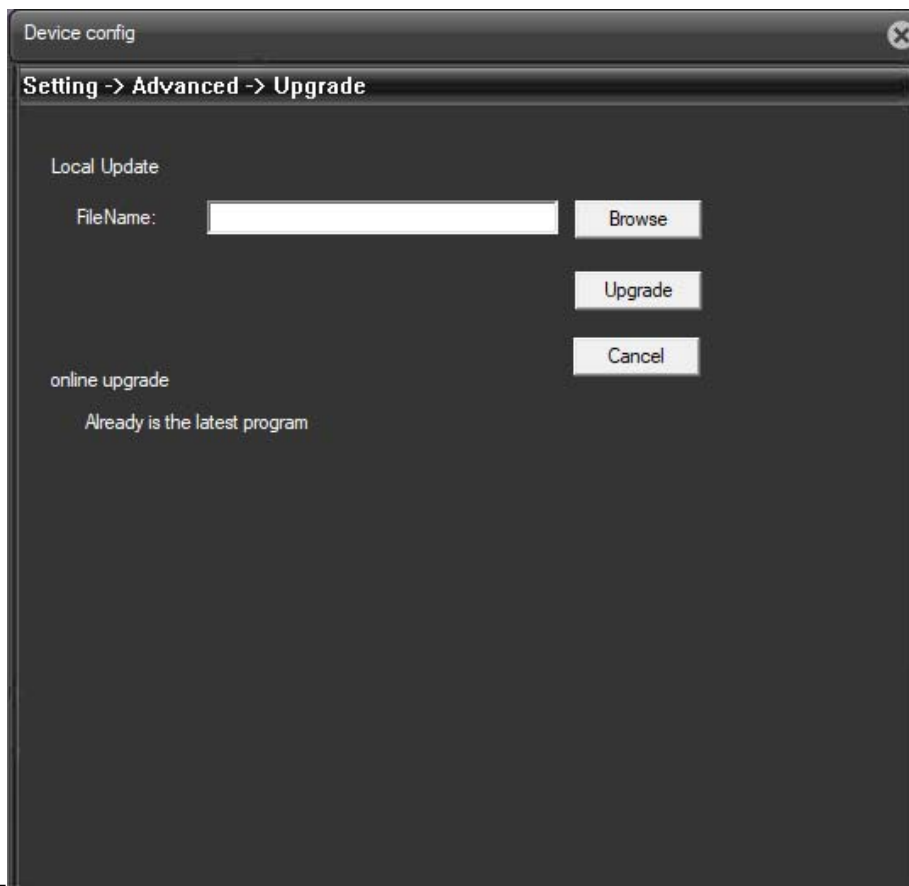
Here you can export and import the configuration of the cameras and the LOG events



**F -**

Here you can reboot the camera. You'll be asked to confirm the reboot

REBOOT - Reboots the camera



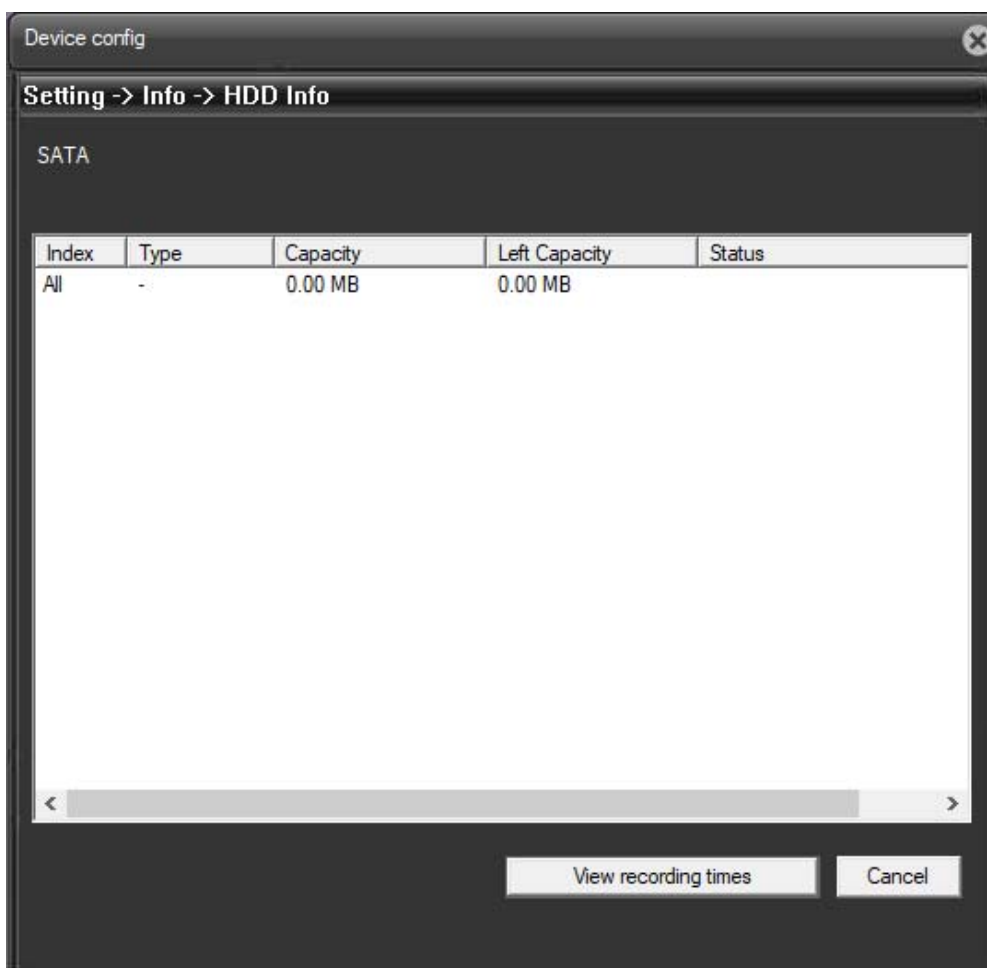
G -

Here you can update the system. To do this you must specify the directory of the update file.

UPGRADE - It 'can make the firmware update, only if requested by the technical DSE

## 4 - INFO

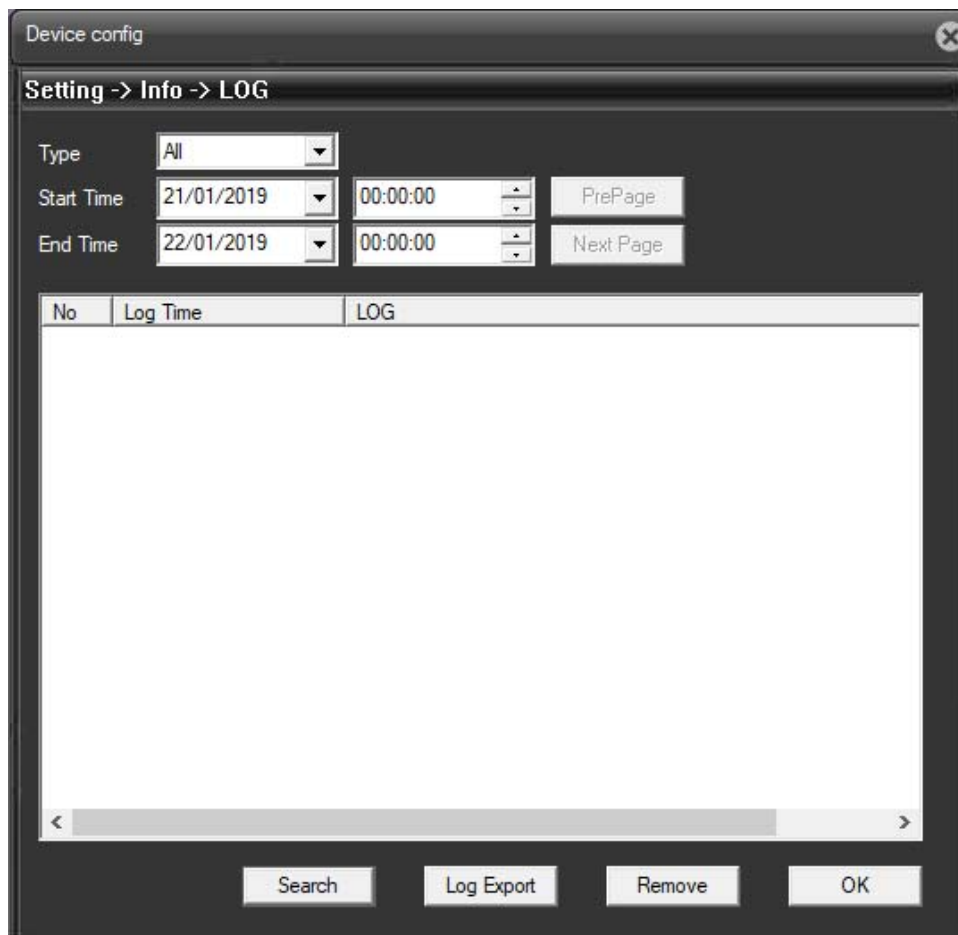
- A) HDD ABOUT
- B) LOG
- C) VERSION



TO -

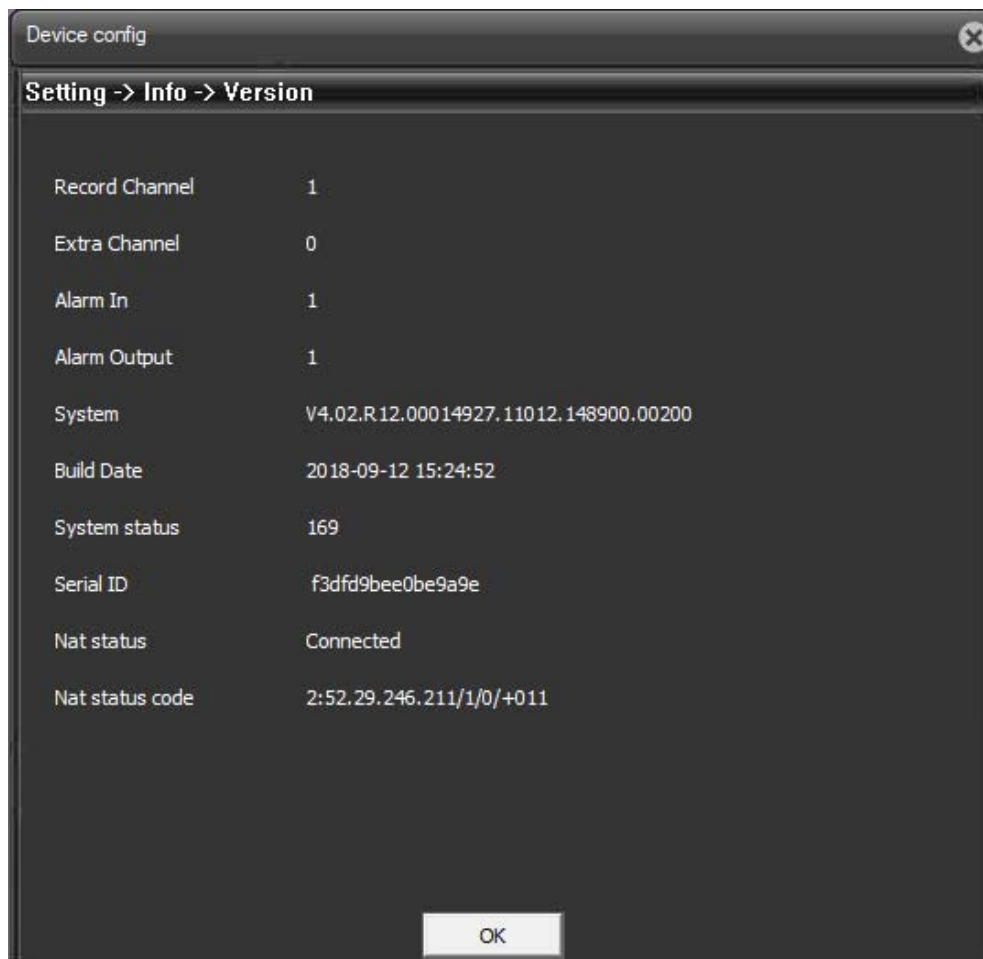
Not used on this model





**B -**

Here you can view the event log of your camera.



C -

Here you can view information regarding the version of your camera software.



## Special commands for NVR

If you control the camera with a NVR system PRESET are provided which serve to carry out the main configurations and launch the main automatic movements without access through the browser.

The commands are listed in the following table. On some NVR, depending begin handling the presets from 0 or from 1 may need to reduce all preset numbers in a figure table.

<b>FUNCTION</b>	<b>CONTROL (no preset)</b>
Start cruise 1 (presets 1-16)	Recall 71
Start cruise 2 (presets 17-32)	Recall 72
Start cruise 3 (presets 33-48)	Recall 73
Start cruise 4 (240-255 presets)	Recall 74
Cruise Stay on preset for 4/2	Recall 75
Cruise Stay on preset for 8/2	Recall 76
Cruise Stay on preset for 10 seconds	Recall 77
Cruise Stay on preset for 15 seconds	Recall 78
Cruise Stay on preset for 20 seconds	Recall 79
Record Pattern 1	Recall 81
Record Pattern 2	Recall 82
Record Pattern 3	Recall 83
Record Pattern 4	Recall 84
pattern Recording end	Recall 85

# INSTALLATION MANUAL

## IP CAMERAS SPEED DOME RJ-SDM18-5



Page: 68

Start the first pattern	Recall 86
Start the second pattern	Recall 87
Start the third pattern	Recall 88
Start the fourth pattern	Recall 89
Set the left limit of the scan (A)	Recall 91
Set right edge of scan (B)	Recall 92
Start scan between A, B	Recall 93
Stop scan between A, B	Recall 94
Start continuous scan at 360 degrees	Recall 99
scan rotation speed 360 degrees and scan AB	Recall 65, 66, 67, 68, 69. These correspond to 3, 6, 9, 15, 40 degrees / second
IDLE function setting, is the function that performs the camera in the absence of operator commands	61 Draws: 1 preset 62 Draws: 1 cruise Recall 63: scan A / B Recall 64: scan 360 degrees
Clear all presets	Recall 60
Open menus Camera Module	Recall 70
Open dome menu	Recall 95
Factory data reset	Recall 96